

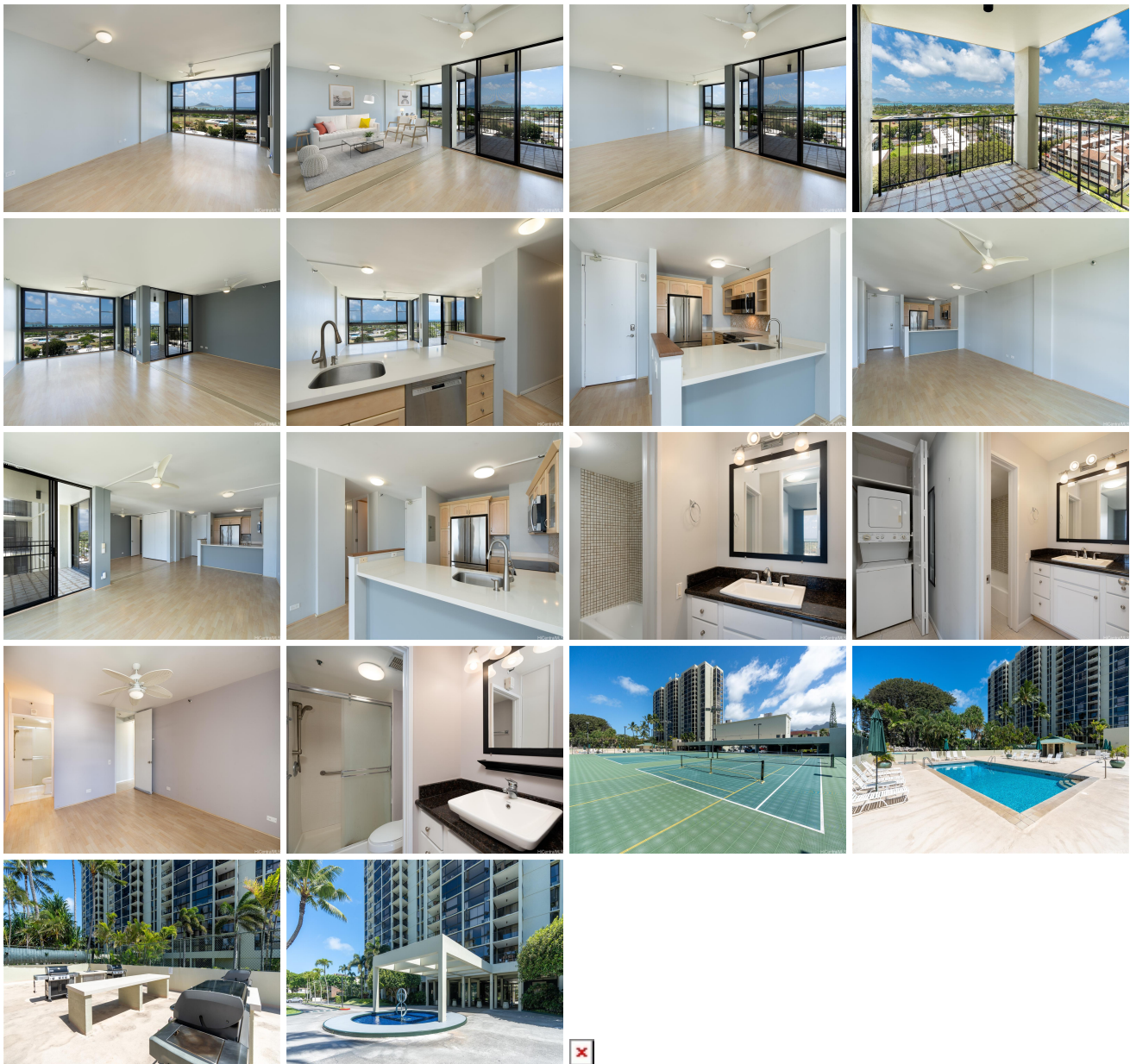
Windward Passage 322 Aoloa Street Unit 1305, Kailua 96734 * \$898,000

Beds: 2	MLS#: 202415942, FS	Year Built: 1979
Bath: 2/0	Status: Active	Remodeled:
Living Sq. Ft.: 964	List Date & DOM: 07-16-2024 & 1	Total Parking: 2
Land Sq. Ft.: 0	Condition: Excellent	Assessed Value
Lanai Sq. Ft.: 92	Frontage: Other	Building: \$738,000
Sq. Ft. Other: 0	Tax/Year: \$270/2023	Land: \$104,400
Total Sq. Ft. 1,056	Neighborhood: Kailua Town	Total: \$842,400
Maint./Assoc. \$839 / \$0	Flood Zone : Zone X - Tool	Stories / CPR: 15-20 / No
Parking: Assigned, Covered - 1, Open - 1, Secured Entry	Frontage: Other	

Zoning: 12 - A-2 Medium Density Apartme

View: Coastline, Mountain, Ocean, Sunrise

Public Remarks: Experience luxury in this 2-bedroom, 2-bathroom condominium on the 13th floor with sweeping views of the ocean and Kailua. Windward Passage merges a peaceful retreat with urban convenience. The unit features resort-like amenities such as a swimming pool, jacuzzi, tennis courts, fitness center, and landscaped gardens. Spend your days at the beach and discover the vibrant local community of Kailua. **Sale Conditions:** None **Schools:** [Kailua](#), [Kailua](#), [Kalaheo](#) * [Request Showing](#), [Photos](#), [History](#), [Maps](#), [Deed](#), [Watch List](#), [Tax Info](#)



Address	Price	Bd & Bth	Living / Avg.	Land Avg.	DOM
322 Aoloa Street 1305	\$898,000	2 & 2/0	964 \$932	0 \$inf	1

Address	Tax Maint. Ass.	Assessed Land	Assessed Building	Assessed Total	Ratio	Year & Remodeled
322 Aoloa Street 1305	\$270 \$839 \$0	\$104,400	\$738,000	\$842,400	107%	1979 & NA

[322 Aoloa Street 1305](#) - MLS#: [202415942](#) - Experience luxury in this 2-bedroom, 2-bathroom condominium on the 13th floor with sweeping views of the ocean and Kailua. Windward Passage merges a peaceful retreat with urban convenience. The unit features resort-like amenities such as a swimming pool, jacuzzi, tennis courts, fitness center, and landscaped gardens. Spend your days at the beach and discover the vibrant local community of Kailua. **Region:** Kailua **Neighborhood:** Kailua Town **Condition:** Excellent **Parking:** Assigned, Covered - 1, Open - 1, Secured Entry **Total Parking:** 2 **View:** Coastline, Mountain, Ocean, Sunrise **Frontage:** Other **Pool:** **Zoning:** 12 - A-2 Medium Density Apartme **Sale Conditions:** None **Schools:** [Kailua](#), [Kailua](#), [Kalaheo](#) * [Request Showing](#), [Photos](#), [History](#), [Maps](#), [Deed](#), [Watch List](#), [Tax Info](#)

DOM = Days on Market