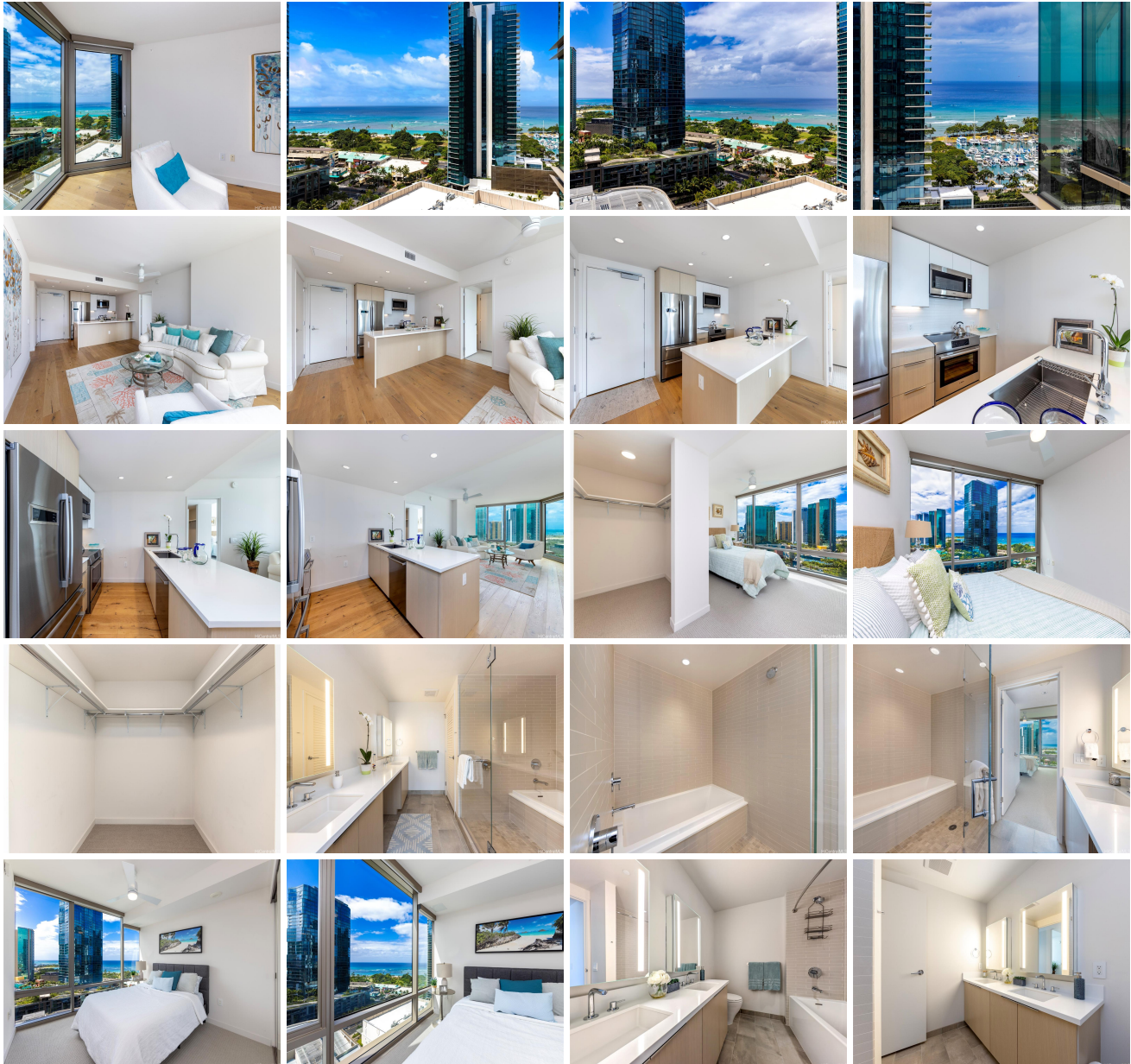


[Ae'o 1001 Queen Street Unit 1804, Honolulu 96814](#) * \$1,400,000

Beds: 2	MLS#: 202415988, FS	Year Built: 2018
Bath: 2/0	Status: Active	Remodeled:
Living Sq. Ft.: 978	List Date & DOM: 07-12-2024 & 3	Total Parking: 2
Land Sq. Ft.: 0	Condition: Excellent	Assessed Value
Lanai Sq. Ft.: 0	Frontage:	Building: \$1,235,200
Sq. Ft. Other: 0	Tax/Year: \$680/2023	Land: \$69,500
Total Sq. Ft. 978	Neighborhood: Kakaako	Total: \$1,304,700
Maint./Assoc. \$1,001 / \$27	Flood Zone : Zone AE - Tool	Stories / CPR: 21+ / No
Parking: Covered - 2, Garage, Guest, Secured Entry, Tandem	Frontage:	
Zoning : Kak - Kakaako Community Development Project	View: City, Ocean	

Public Remarks: Welcome home to Ae'o at Ward Village, one of Honolulu's newer luxury residences in an award-winning "Work, Play, Live" community. Situated on the preferred Diamond Head side, this 18th-floor home features a well-designed 2 bedroom, 2 bath floor plan with Pacific Ocean and Beach Park views from the primary living and bedroom areas. Highlights include floor-to-ceiling windows throughout, a modern kitchen with two-tone cabinetry and Bosch appliances, a primary suite with a walk-in closet and resort-style ensuite bath with a double vanity, shower room, and much more. Ae'o features a full-suite of lifestyle amenities including multiple swimming pools, barbecue areas, and an iconic sky terrace on the top level. Its superb location puts you alongside a flagship Whole Foods, blocks from sandy beaches at Ala Moana Beach Park, nearby shops, casual and fine-dining, and entertainment options. Listing includes enhanced, zoomed-in photos. **Sale Conditions:** None **Schools:** [Kaahumanu](#), [Stevenson](#), [Mckinley](#) * [Request Showing](#), [Photos](#), [History](#), [Maps](#), [Deed](#), [Watch List](#), [Tax Info](#)





Address	Price	Bd & Bth	Living / Avg.	Land Avg.	DOM
1001 Queen Street 1804	\$1,400,000	2 & 2/0	978 \$1,431	0 \$inf	3

Address	Tax Maint. Ass.	Assessed Land	Assessed Building	Assessed Total	Ratio	Year & Remodeled
1001 Queen Street 1804	\$680 \$1,001 \$27	\$69,500	\$1,235,200	\$1,304,700	107%	2018 & NA

[1001 Queen Street 1804](#) - MLS#: [202415988](#) - Welcome home to Ae'o at Ward Village, one of Honolulu's newer luxury residences in an award-winning "Work, Play, Live" community. Situated on the preferred Diamond Head side, this 18th-floor home features a well-designed 2 bedroom, 2 bath floor plan with Pacific Ocean and Beach Park views from the primary living and bedroom areas. Highlights include floor-to-ceiling windows throughout, a modern kitchen with two-tone cabinetry and Bosch appliances, a primary suite with a walk-in closet and resort-style ensuite bath with a double vanity, shower room, and much more. Ae'o features a full-suite of lifestyle amenities including multiple swimming pools, barbecue areas, and an iconic sky terrace on the top level. Its superb location puts you alongside a flagship Whole Foods, blocks from sandy beaches at Ala Moana Beach Park, nearby shops, casual and fine-dining, and entertainment options. Listing includes enhanced, zoomed-in photos. **Region:** Metro **Neighborhood:** Kakaako **Condition:** Excellent **Parking:** Covered - 2, Garage, Guest, Secured Entry, Tandem **Total Parking:** 2 **View:** City, Ocean **Frontage:** **Pool:** **Zoning:** Kak - Kakaako Community Development Project **Sale Conditions:** None **Schools:** [Kaahumanu](#), [Stevenson](#), [Mckinley](#) * [Request Showing](#), [Photos](#), [History](#), [Maps](#), [Deed](#), [Watch List](#), [Tax Info](#)

DOM = Days on Market