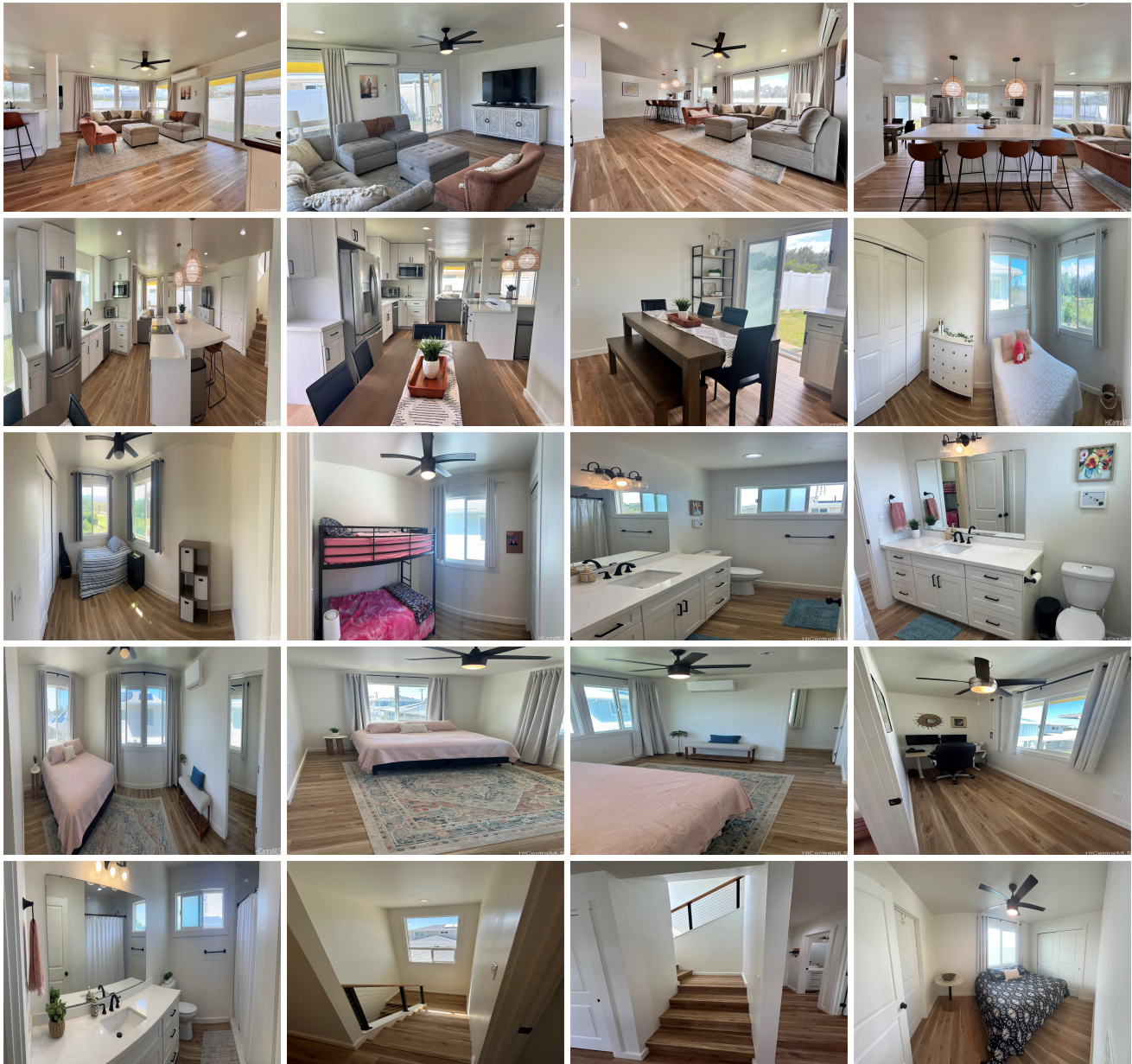


56-458 Kamehameha Highway Unit 10, Kahuku 96731 * \$1,249,999

Beds: 5	MLS#: 202416020, FS	Year Built: 2022
Bath: 3/0	Status: Active	Remodeled:
Living Sq. Ft.: 2,342	List Date & DOM: 07-14-2024 & 3	Total Parking: 3
Land Sq. Ft.: 5,000	Condition: Excellent	Assessed Value
Lanai Sq. Ft.: 176	Frontage:	Building: \$545,500
Sq. Ft. Other: 0	Tax/Year: \$284/2024	Land: \$427,500
Total Sq. Ft. 2,518	Neighborhood: Kahuku	Total: \$973,000
Maint./Assoc. \$0 / \$305	Flood Zone : Zone AE - Tool	Stories / CPR: Two / Yes
Parking: 1 Car, Garage	Frontage:	
Zoning : 05 - R-5 Residential District	View: Mountain	

Public Remarks: A newly constructed housing development is celebrated for its peaceful ambiance and proximity to North Shore beaches famous for world-class surfing and breathtaking sunsets. Upon entering, you'll be greeted by an air conditioned living room that flows effortlessly into a beautifully designed modern kitchen, complete with a large island and raised bar—perfect for everyday living and entertaining. The open kitchen concept extends into a dining area, ideal for gatherings and creating memorable moments. Luxury vinyl flooring throughout enhances the home's contemporary appeal, while abundant natural light amplifies the sense of space and tranquility. The main floor features a convenient bedroom with an adjoining bath, providing ideal accommodations for guests or flexible living options. Upstairs, the expansive master bedroom awaits, complete with air conditioning and an adjoining office space that doubles as a serene retreat or additional closet space. Three additional bedrooms offer ample space for family members or guests, each with generous closet space and easy access to a full bathroom. No backyard neighbors, back view overlooks a picturesque farmland and majestic mountain range. **Sale Conditions:** None **Schools:** [Kahuku](#), [Kahuku](#), [Kahuku](#) * [Request Showing](#), [Photos](#), [History](#), [Maps](#), [Deed](#), [Watch List](#), [Tax Info](#)





Address	Price	Bd & Bth	Living / Avg.	Land Avg.	DOM
56-458 Kamehameha Highway 10	\$1,249,999	5 & 3/0	2,342 \$534	5,000 \$250	3

Address	Tax Maint. Ass.	Assessed Land	Assessed Building	Assessed Total	Ratio	Year & Remodeled
56-458 Kamehameha Highway 10	\$284 \$0 \$305	\$427,500	\$545,500	\$973,000	128%	2022 & NA

[56-458 Kamehameha Highway 10](#) - MLS#: [202416020](#) - A newly constructed housing development is celebrated for its peaceful ambiance and proximity to North Shore beaches famous for world-class surfing and breathtaking sunsets. Upon entering, you'll be greeted by an air conditioned living room that flows effortlessly into a beautifully designed modern kitchen, complete with a large island and raised bar—perfect for everyday living and entertaining. The open kitchen concept extends into a dining area, ideal for gatherings and creating memorable moments. Luxury vinyl flooring throughout enhances the home's contemporary appeal, while abundant natural light amplifies the sense of space and tranquility. The main floor features a convenient bedroom with an adjoining bath, providing ideal accommodations for guests or flexible living options. Upstairs, the expansive master bedroom awaits, complete with air conditioning and an adjoining office space that doubles as a serene retreat or additional closet space. Three additional bedrooms offer ample space for family members or guests, each with generous closet space and easy access to a full bathroom. No backyard neighbors, back view overlooks a picturesque farmland and majestic mountain range. **Region:** North Shore **Neighborhood:** Kahuku **Condition:** Excellent **Parking:** 1 Car, Garage **Total Parking:** 3 **View:** Mountain **Frontage:** **Pool:** None **Zoning:** 05 - R-5 Residential District **Sale Conditions:** None **Schools:** [Kahuku](#), [Kahuku](#), [Kahuku](#) * [Request Showing](#), [Photos](#), [History](#), [Maps](#), [Deed](#), [Watch List](#), [Tax Info](#)

DOM = Days on Market