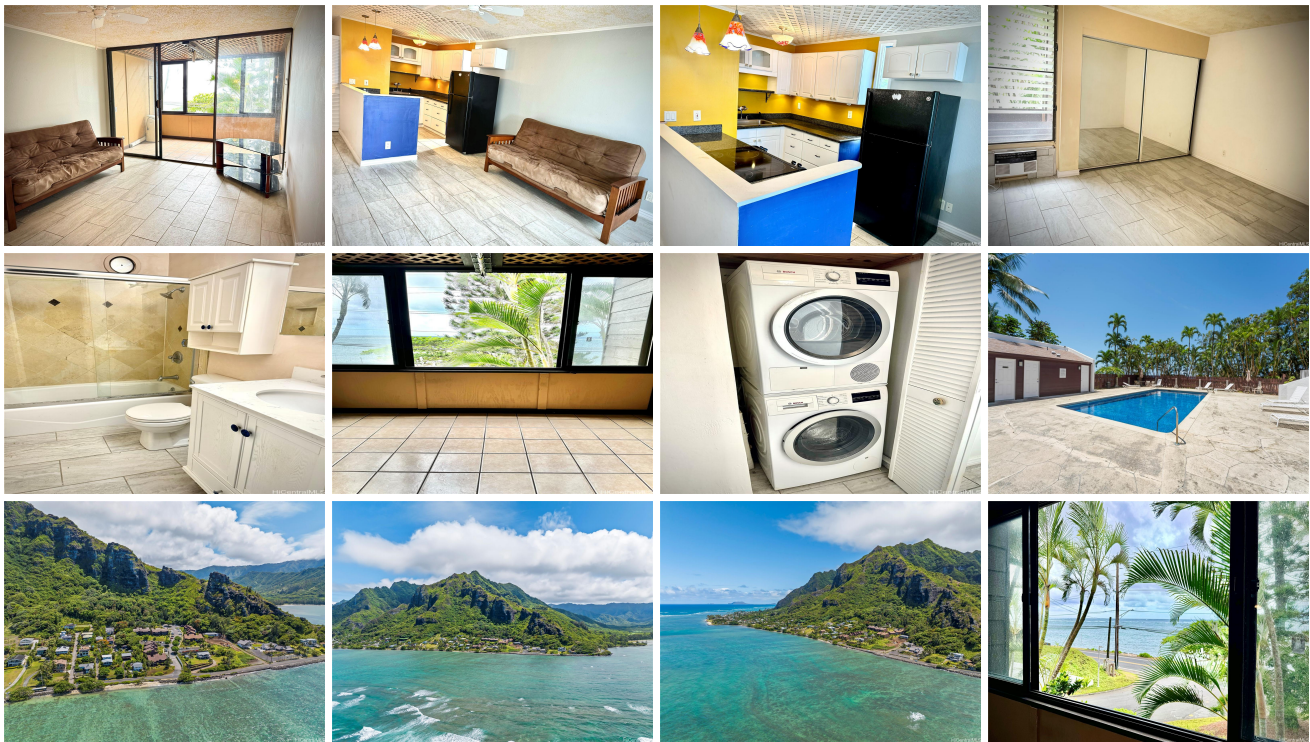


## **Makaua Village 51-636 Kamehameha Highway Unit 111, Kaaawa 96730 \* Makaua Village \***

**\$469,000**

Beds: <b>1</b>	MLS#: <b><u>202416025</u>, FS</b>	Year Built: <b>1973</b>
Bath: <b>1/0</b>	Status: <b>Active</b>	Remodeled:
Living Sq. Ft.: <b>519</b>	List Date & DOM: <b>07-25-2024 &amp; 2</b>	Total Parking: <b>1</b>
Land Sq. Ft.: <b>288,629</b>	Condition: <b>Above Average</b>	<a href="#">Assessed Value</a>
Lanai Sq. Ft.: <b>101</b>	Frontage: <b>Ocean</b>	Building: <b>\$296,100</b>
Sq. Ft. Other: <b>0</b>	Tax/Yr: <b>\$78/2024</b>	Land: <b>\$132,500</b>
Total Sq. Ft. <b>620</b>	Neighborhood: <b>Kaaawa</b>	Total: <b>\$428,600</b>
Maint./Assoc. <b>\$754 / \$0</b>	<a href="#">Flood Zone</a> : <b>Zone X - Tool</b>	Stories / CPR: <b>Three / No</b>
Parking: <b>Assigned</b>	Frontage: <b>Ocean</b>	
<a href="#">Zoning</a> : <b>05 - R-5 Residential District</b>	View: <b>Coastline, Mountain, Ocean</b>	

**Public Remarks:** Welcome to Makaua Village, nestled between the majestic Ko'olau Mountains of Crouching Lion and the stunning oceanfront of Kahana Bay. This rare 1 bedroom, 1 bath ground-floor corner unit offers breathtaking ocean views. Experience the tranquility of rural living while being conveniently located approximately 20 minutes from Kaneohe and the North Shore. Enjoy time with friends and family in the saltwater pool or host BBQ gatherings on the hilltop pavilion with fantastic ocean views or hang out at our perfect whale watching area. The unit comes with one assigned parking stall, ample guest parking, and is pet-friendly (please verify). Discover the tranquil beauty of Makaua Village and make it your own home. \*Open House Sunday 7/28/2024 at 11am-1pm.\* **Sale Conditions:** None **Schools:** [Kaaawa](#), [Kahuku](#), [Kahuku](#) \* [Request Showing](#), [Photos](#), [History](#), [Maps](#), [Deed](#), [Watch List](#), [Tax Info](#)



Address	Price	Bd & Bth	Living / Avg.	Land   Avg.	Lanai	Occ.	FL	DOM
<a href="#">51-636 Kamehameha Highway 111</a>	<a href="#">\$469,000</a>	1 & 1/0	519   \$904	288,629   \$2	101	60%	1	2

Address	Tax   Maint.   Ass.	Assessed Land	Assessed Building	Assessed Total	Ratio	Year & Remodeled
<a href="#">51-636 Kamehameha Highway 111</a>	\$78   \$754   \$0	\$132,500	\$296,100	\$428,600	109%	1973 & NA

[51-636 Kamehameha Highway 111](#) - MLS#: [202416025](#) - Welcome to Makaua Village, nestled between the majestic Ko'olau Mountains of Crouching Lion and the stunning oceanfront of Kahana Bay. This rare 1 bedroom, 1 bath ground-floor corner unit offers breathtaking ocean views. Experience the tranquility of rural living while being conveniently located approximately 20 minutes from Kaneohe and the North Shore. Enjoy time with friends and family in the saltwater pool or host BBQ gatherings on the hilltop pavilion with fantastic ocean views or hang out at our perfect whale watching area. The unit comes with one assigned parking stall, ample guest parking, and is pet-friendly (please verify). Discover the tranquil beauty of Makaua Village and make it your own home. \*Open House Sunday 7/28/2024 at 11am-1pm.\* **Region:** Kaneohe **Neighborhood:** Kaaawa **Condition:** Above Average **Parking:** Assigned **Total Parking:** 1 **View:** Coastline, Mountain, Ocean **Frontage:** Ocean **Pool:** **Zoning:** 05 - R-5 Residential District **Sale Conditions:** None **Schools:** [Kaaawa](#), [Kahuku](#), [Kahuku](#) \* [Request Showing](#), [Photos](#), [History](#), [Maps](#), [Deed](#), [Watch List](#), [Tax Info](#)

DOM = Days on Market, Occ. = Occupancy, FL = Floor Number