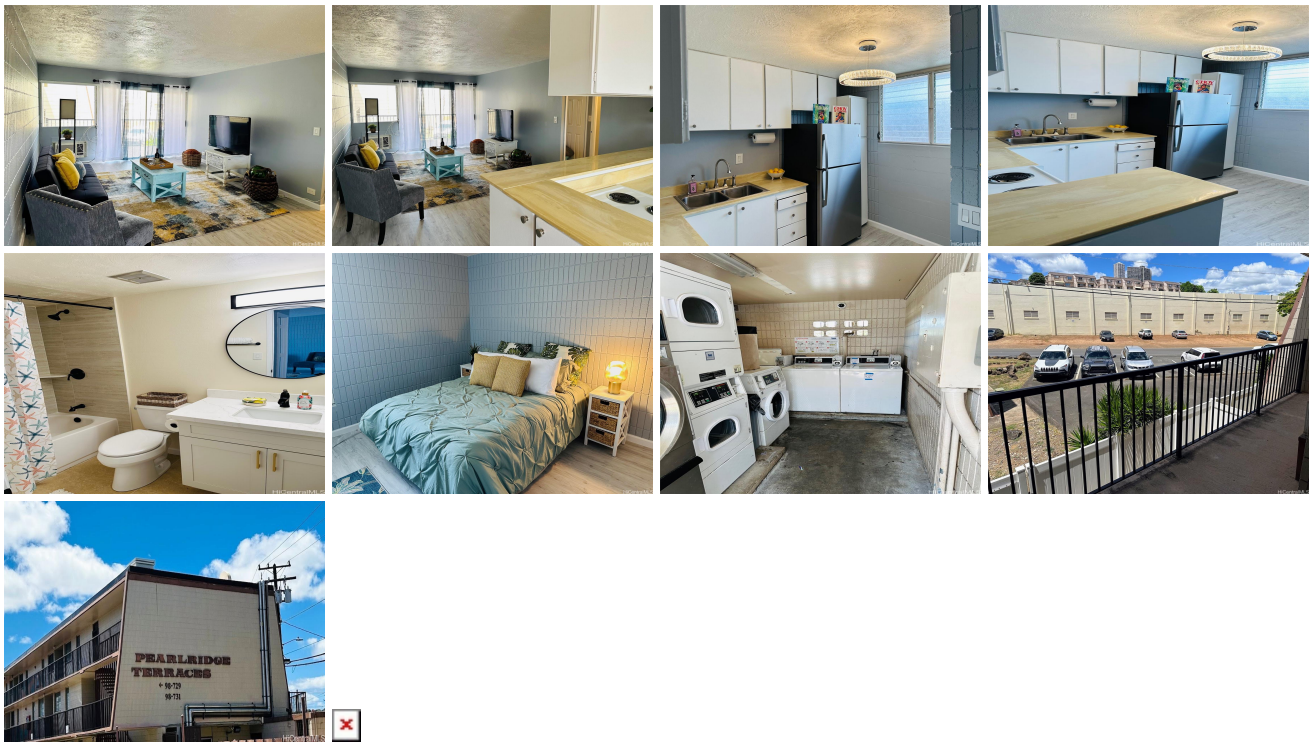


Pearl Ridge Terraces 98-729 Moanalua Loop Unit 223, Aiea 96701 * \$335,000

Beds: 1	MLS#: 202416035, FS	Year Built: 1967
Bath: 1/0	Status: Active	Remodeled:
Living Sq. Ft.: 765	List Date & DOM: 07-15-2024 & 1	Total Parking: 1
Land Sq. Ft.: 73,486	Condition: Excellent	Assessed Value
Lanai Sq. Ft.: 0	Frontage:	Building: \$259,600
Sq. Ft. Other: 0	Tax/Year: \$54/2023	Land: \$83,000
Total Sq. Ft. 765	Neighborhood: Waimalu	Total: \$342,600
Maint./Assoc. \$532 / \$0	Flood Zone : Zone X - Tool	Stories / CPR: One / No
Parking: Assigned, Open - 1	Frontage:	
Zoning : 12 - A-2 Medium Density Apartme	View: None	

Public Remarks: Priced Under Assessed Value! This large 1-bedroom, 1-bath boasts 765 sq. ft. of interior living space with an open floor plan. The unit has been renovated with a New Bathroom, Fresh Paint, New Vinyl Plank Flooring, and Furniture is included! Enjoy being centrally located across of PearlrIDGE and Westbridge Shopping Centers, the New Skyline Rail Station, minutes to Pearl Harbor, and so much more. Maintenance Fee includes: Hot Water, Sewer, and Water, Resident Manager Service, Pool Maintenance, & Refuse Service. Electricity is billed to owners individually each month. **Sale Conditions:** None **Schools:** , , * [Request Showing](#), [Photos](#), [History](#), [Maps](#), [Deed](#), [Watch List](#), [Tax Info](#)



Address	Price	Bd & Bth	Living / Avg.	Land Avg.	DOM
98-729 Moanalua Loop 223	\$335,000	1 & 1/0	765 \$438	73,486 \$5	1

Address	Tax Maint. Ass.	Assessed Land	Assessed Building	Assessed Total	Ratio	Year & Remodeled
98-729 Moanalua Loop 223	\$54 \$532 \$0	\$83,000	\$259,600	\$342,600	98%	1967 & NA

[98-729 Moanalua Loop 223](#) - MLS#: [202416035](#) - Priced Under Assessed Value! This large 1-bedroom, 1-bath boasts 765 sq. ft. of interior living space with an open floor plan. The unit has been renovated with a New Bathroom, Fresh Paint, New Vinyl Plank Flooring, and Furniture is included! Enjoy being centrally located across of PearlrIDGE and Westbridge Shopping Centers, the New Skyline Rail Station, minutes to Pearl Harbor, and so much more. Maintenance Fee includes: Hot Water, Sewer, and Water, Resident Manager Service, Pool Maintenance, & Refuse Service. Electricity is billed to owners individually each month. **Region:** Pearl City **Neighborhood:** Waimalu **Condition:** Excellent **Parking:** Assigned, Open - 1 **Total Parking:** 1 **View:** None **Frontage:** Pool: **Zoning:** 12 - A-2 Medium Density Apartme **Sale Conditions:** None **Schools:** , , * [Request Showing](#), [Photos](#), [History](#), [Maps](#), [Deed](#), [Watch List](#), [Tax Info](#)

DOM = Days on Market