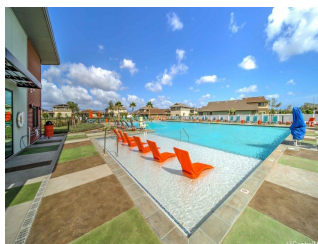
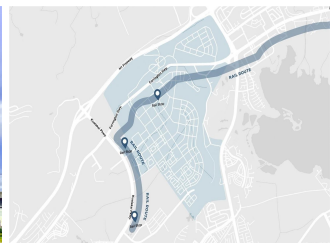
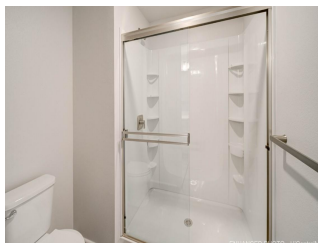
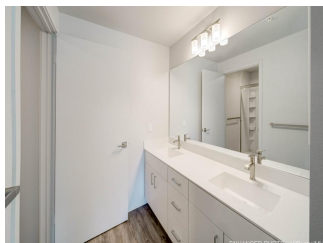
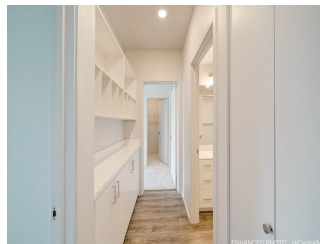
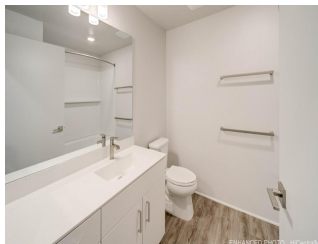
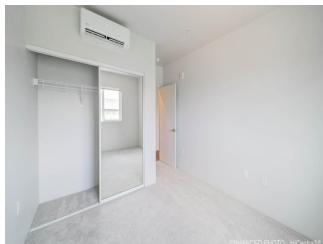
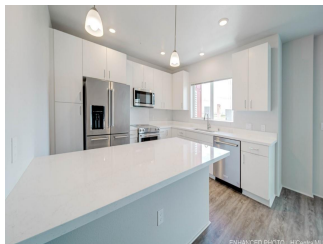
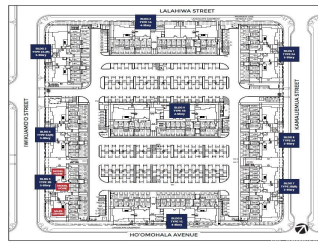


Nahele at Hoopili 91-3641 IWIKUAMOO Street Unit 2412, Ewa Beach 96706 * Nahele at Hoopili * \$631,970

Beds: 2 Bath: 2/0 Living Sq. Ft.: 1,081 Land Sq. Ft.: 0 Lanai Sq. Ft.: 0 Sq. Ft. Other: 0 Total Sq. Ft. 1,081 Maint./Assoc. \$432 / \$78 Parking: Assigned, Garage, Open - 1 Zoning: 17 - AMX-2 Medium Density Apt M	MLS#: 202416038, FS Status: Active List Date & DOM: 07-12-2024 & 4 Condition: Excellent Frontage: Tax/Year: \$0/2024 Neighborhood: Hoopili-nahele Flood Zone: Zone D - Tool	Year Built: 2024 Remodeled: Total Parking: 2 Assessed Value Building: \$0 Land: \$0 Total: \$0 Stories / CPR: 4-7 / No Frontage: View: Other
---	---	--

Public Remarks: MOVE IN READY! This single level 2 bedroom, 2 bath condominium with 1,069 square feet (net) allows for comfortable living. The concrete masonry block wall at the entry adds a chic urban vibe. This floor plan offers an open-concept living room and kitchen with an eat-at counter. From the living room, step out to the covered lanai to relax and take in the fresh air. The main bedroom has a walk-in closet and ensuite bathroom with a double vanity and shower. This corner unit provides for additional windows and sunlight. The second bedroom has a generously sized closet with mirrored wardrobe doors and the second bathroom features a full-size bathtub. A unique feature of this plan type is the drop zone. Air Conditioning and modern appliances including a range/oven, micro-hood, dishwasher, refrigerator, and washer/dryer allow for ease of living. Home Is Connected® - Smart Home system+ and includes energy efficient features*. **Sale Conditions:** None
Schools: [Ewa](#), [Honouliuli](#), [Kapolei](#) * [Request Showing](#), [Photos](#), [History](#), [Maps](#), [Deed](#), [Watch List](#), [Tax Info](#)





Address	Price	Bd & Bth	Living / Avg.	Land Avg.	Lanai	Occ.	FL	DOM
91-3641 IWIKUAMOO Street 2412	\$631,970	2 & 2/0	1,081 \$585	0 \$inf	0	88%	4	4

Address	Tax Maint. Ass.	Assessed Land	Assessed Building	Assessed Total	Ratio	Year & Remodeled
91-3641 IWIKUAMOO Street 2412	\$0 \$432 \$78	\$0	\$0	\$0	inf%	2024 & NA

[91-3641 IWIKUAMOO Street 2412](#) - MLS#: [202416038](#) - MOVE IN READY! This single level 2 bedroom, 2 bath condominium with 1,069 square feet (net) allows for comfortable living. The concrete masonry block wall at the entry adds a chic urban vibe. This floor plan offers an open-concept living room and kitchen with an eat-at counter. From the living room, step out to the covered lanai to relax and take in the fresh air. The main bedroom has a walk-in closet and ensuite bathroom with a double vanity and shower. This corner unit provides for additional windows and sunlight. The second bedroom has a generously sized closet with mirrored wardrobe doors and the second bathroom features a full-size bathtub. A unique feature of this plan type is the drop zone. Air Conditioning and modern appliances including a range/oven, micro-hood, dishwasher, refrigerator, and washer/dryer allow for ease of living. Home Is Connected® - Smart Home system+ and includes energy efficient features*. **Region:** Ewa Plain **Neighborhood:** Hoopili-nahele **Condition:** Excellent **Parking:** Assigned, Garage, Open - 1 **Total Parking:** 2 **View:** Other **Frontage:** **Pool:** **Zoning:** 17 - AMX-2 Medium Density Apt M **Sale Conditions:** None **Schools:** [Ewa](#), [Honouliuli](#), [Kapolei](#) * [Request Showing](#), [Photos](#), [History](#), [Maps](#), [Deed](#), [Watch List](#), [Tax Info](#)

DOM = Days on Market, Occ. = Occupancy, FL = Floor Number