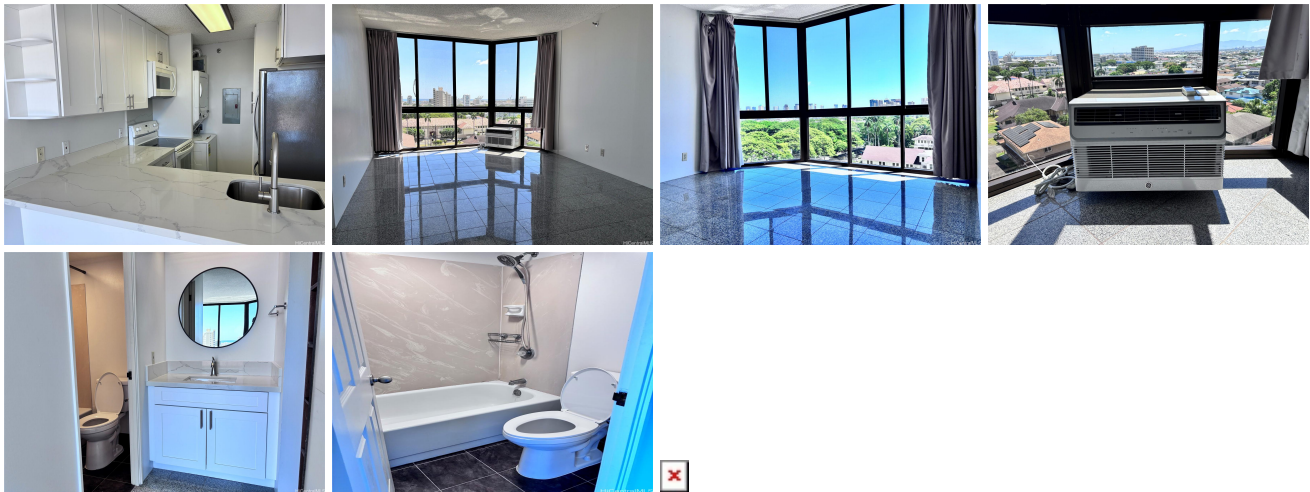


2040 Nuuanu 2040 Nuuanu Avenue Unit 705, Honolulu 96817 * \$379,000

Beds: 1	MLS#: 202416076, FS	Year Built: 1984
Bath: 1/0	Status: Active	Remodeled: 2021
Living Sq. Ft.: 551	List Date & DOM: 07-12-2024 & 4	Total Parking: 1
Land Sq. Ft.: 26,005	Condition: Above Average	Assessed Value
Lanai Sq. Ft.: 0	Frontage: Other	Building: \$337,000
Sq. Ft. Other: 0	Tax/Year: \$112/2023	Land: \$42,600
Total Sq. Ft. 551	Neighborhood: Nuuanu-lower	Total: \$379,600
Maint./Assoc. \$980 / \$0	Flood Zone : Zone X - Tool	Stories / CPR: / No
Parking: Assigned, Garage, Open - 1, Secured Entry, Street	Frontage: Other	
Zoning : 12 - A-2 Medium Density Apartme	View: Cemetery, Mountain, Ocean	

Public Remarks: A nicely upgraded 1-bedroom unit in 2040 Nuuanu! New microwave, refrigerator and washer/dryer. New kitchen countertops, cabinets, bathroom cabinets and window AC in living room. Beautiful ceramic tile throughout, Sprinkler System in unit and bonus storage space in the corridor. Stunning coastline and Downtown views that's perfect for watching the fireworks shows. Close to Bus, shopping, Queen's Hospital, Long's, Safeway, freeway, Maemae Elementary School and More! The building has amenities: pool, whirlpool, sauna, BBQ, car wash area, meeting room, guest parking and a lobby. Must see this great unit in a great building! **Sale Conditions:** None **Schools:** , , * [Request Showing](#), [Photos](#), [History](#), [Maps](#), [Deed](#), [Watch List](#), [Tax Info](#)



Address	Price	Bd & Bth	Living / Avg.	Land Avg.	DOM
2040 Nuuanu Avenue 705	\$379,000	1 & 1/0	551 \$688	26,005 \$15	4

Address	Tax Maint. Ass.	Assessed Land	Assessed Building	Assessed Total	Ratio	Year & Remodeled
2040 Nuuanu Avenue 705	\$112 \$980 \$0	\$42,600	\$337,000	\$379,600	100%	1984 & 2021

[2040 Nuuanu Avenue 705](#) - MLS#: [202416076](#) - A nicely upgraded 1-bedroom unit in 2040 Nuuanu! New microwave, refrigerator and washer/dryer. New kitchen countertops, cabinets, bathroom cabinets and window AC in living room. Beautiful ceramic tile throughout, Sprinkler System in unit and bonus storage space in the corridor. Stunning coastline and Downtown views that's perfect for watching the fireworks shows. Close to Bus, shopping, Queen's Hospital, Long's, Safeway, freeway, Maemae Elementary School and More! The building has amenities: pool, whirlpool, sauna, BBQ, car wash area, meeting room, guest parking and a lobby. Must see this great unit in a great building! **Region:** Metro **Neighborhood:** Nuuanu-lower **Condition:** Above Average **Parking:** Assigned, Garage, Open - 1, Secured Entry, Street **Total Parking:** 1 **View:** Cemetery, Mountain, Ocean **Frontage:** Other **Pool:** **Zoning:** 12 - A-2 Medium Density Apartme **Sale Conditions:** None **Schools:** , , * [Request Showing](#), [Photos](#), [History](#), [Maps](#), [Deed](#), [Watch List](#), [Tax Info](#)

DOM = Days on Market