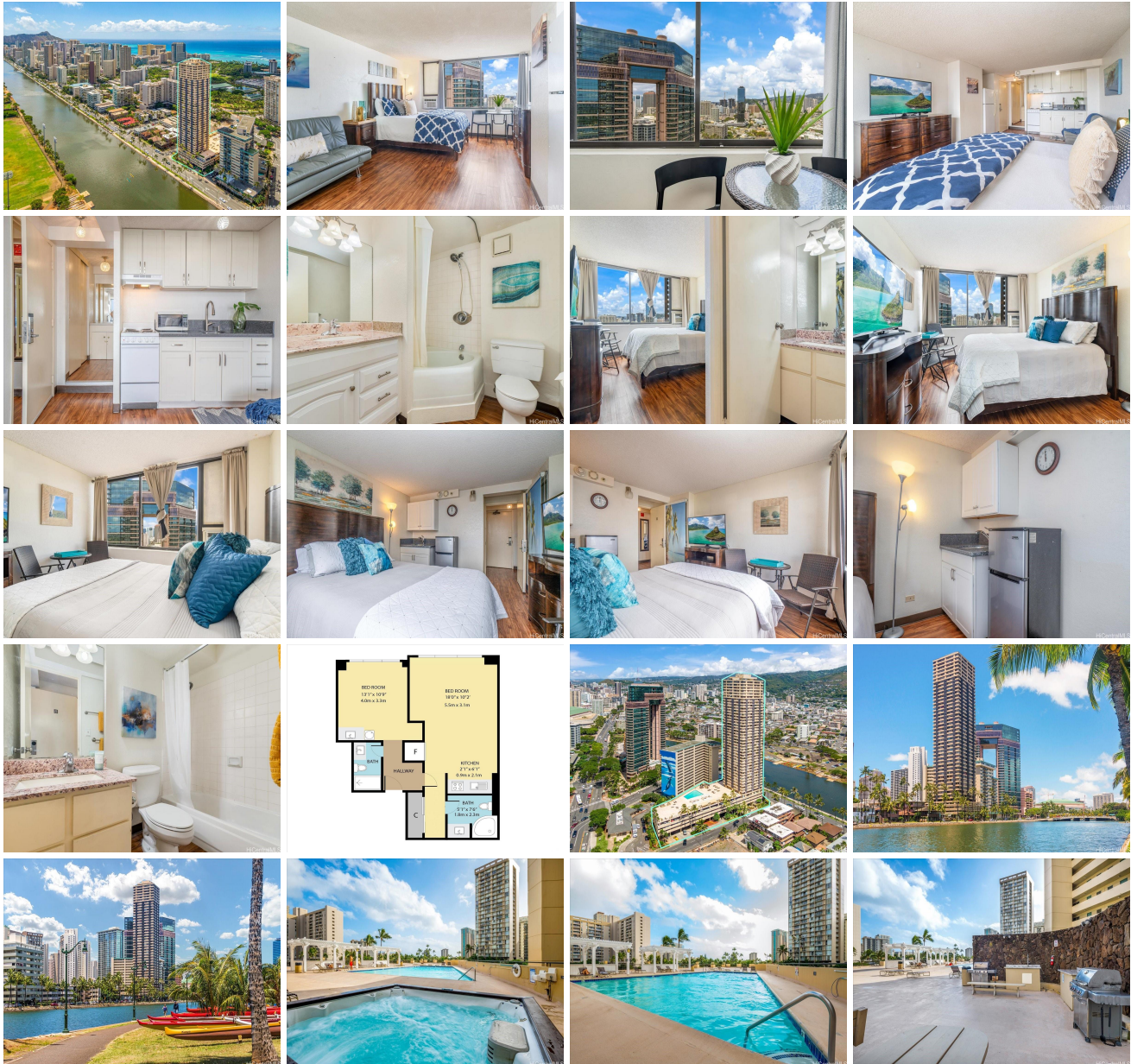
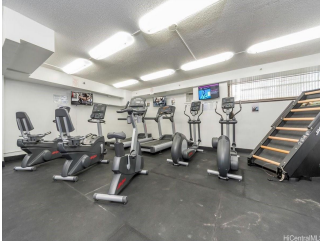


Hawaiian Monarch 444 Niu Street Unit 2808, Honolulu 96815 * \$618,000

Beds: 1	MLS#: 202416109, FS	Year Built: 1979
Bath: 2/0	Status: Active	Remodeled:
Living Sq. Ft.: 576	List Date & DOM: 07-15-2024 & 1	Total Parking: 0
Land Sq. Ft.: 0	Condition: Above Average, Average	Assessed Value
Lanai Sq. Ft.: 0	Frontage:	Building: \$411,400
Sq. Ft. Other: 0	Tax/Year: \$531/2024	Land: \$218,900
Total Sq. Ft. 576	Neighborhood: Waikiki	Total: \$630,300
Maint./Assoc. \$987 / \$0	Flood Zone : Zone AO - Tool	Stories / CPR: 21+ / No
Parking: None	Frontage:	
Zoning : X2 - Apartment Precinct	View: City, Marina/Canal, Mountain	

Public Remarks: LEGAL SHORT TERM / DAILY VACATION RENTALS ALLOWED! This great Waikiki vacation friendly condo-hotel, a rare and unique 1-bdrm with 2 baths floor plan features separate entrances allowing the option to rent as 2 separate studio units. Located on the 28th floor, a corner end unit with an efficient floor plan and rental ready! Enjoy the views of Ala Wai canal, mountain, the brilliant colors of city lights. Hawaiian Monarch is great and one of a few condo-hotel building located near the entrance of Waikiki, it features an opened air lobby w/ resort amenities such as pool, fitness center, outdoor seating deck, a convenient store, cafe, eateries & many more enjoyable essentials of the world famous resort Waikiki location. **Sale Conditions:** None **Schools:** [Ala Wai](#), [Washington](#), [Mckinley](#) * [Request Showing](#), [Photos](#), [History](#), [Maps](#), [Deed](#), [Watch List](#), [Tax Info](#)





Address	Price	Bd & Bth	Living / Avg.	Land Avg.	DOM
444 Niu Street 2808	\$618,000	1 & 2/0	576 \$1,073	0 \$inf	1

Address	Tax Maint. Ass.	Assessed Land	Assessed Building	Assessed Total	Ratio	Year & Remodeled
444 Niu Street 2808	\$531 \$987 \$0	\$218,900	\$411,400	\$630,300	98%	1979 & NA

[444 Niu Street 2808](#) - MLS#: [202416109](#) - LEGAL SHORT TERM / DAILY VACATION RENTALS ALLOWED! This great Waikiki vacation friendly condo-hotel, a rare and unique 1-bdrm with 2 baths floor plan features separate entrances allowing the option to rent as 2 separate studio units. Located on the 28th floor, a corner end unit with an efficient floor plan and rental ready! Enjoy the views of Ala Wai canal, mountain, the brilliant colors of city lights. Hawaiian Monarch is great and one of a few condo-hotel building located near the entrance of Waikiki, it features an opened air lobby w/ resort amenities such as pool, fitness center, outdoor seating deck, a convenient store, cafe, eateries & many more enjoyable essentials of the world famous resort Waikiki location. **Region:** Metro **Neighborhood:** Waikiki **Condition:** Above Average, Average **Parking:** None **Total Parking:** 0 **View:** City, Marina/Canal, Mountain **Frontage:** **Pool:** **Zoning:** X2 - Apartment Precinct **Sale Conditions:** None **Schools:** [Ala Wai](#), [Washington](#), [Mckinley](#) * [Request Showing](#), [Photos](#), [History](#), [Maps](#), [Deed](#), [Watch List](#), [Tax Info](#)

DOM = Days on Market