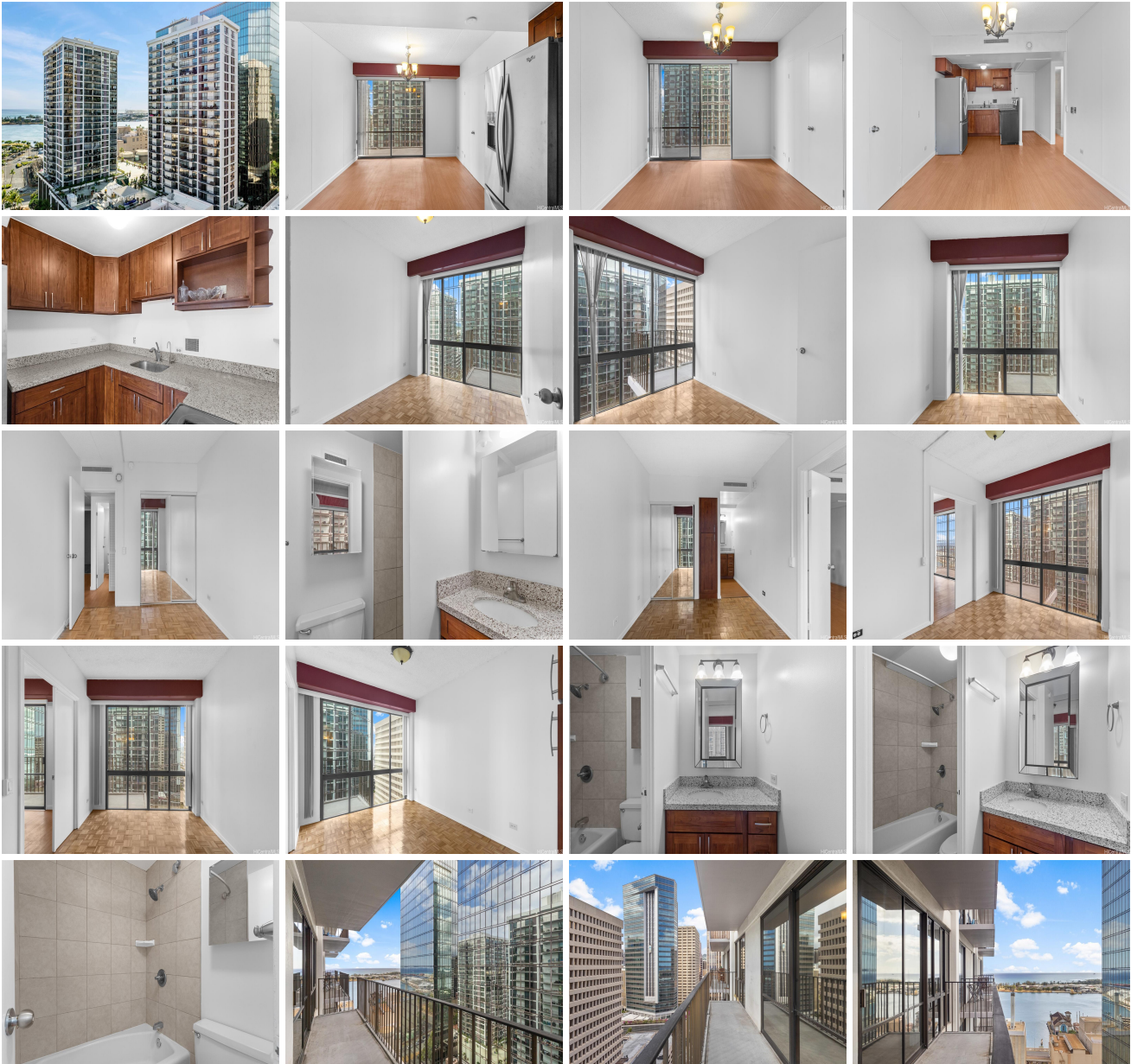


Harbor Square 225 Queen Street Unit 22E, Honolulu 96813 * \$399,000

Beds: 2	MLS#: 202416110, FS	Year Built: 1971
Bath: 2/0	Status: Active	Remodeled:
Living Sq. Ft.: 604	List Date & DOM: 07-14-2024 & 2	Total Parking: 0
Land Sq. Ft.: 67,910	Condition: Average	Assessed Value
Lanai Sq. Ft.: 121	Frontage:	Building: \$375,200
Sq. Ft. Other: 0	Tax/Year: \$75/2024	Land: \$40,500
Total Sq. Ft. 725	Neighborhood: Downtown	Total: \$415,700
Maint./Assoc. \$1,128 / \$0	Flood Zone : Zone X - Tool	Stories / CPR: One / No
Parking: None, Guest	Frontage:	
Zoning : 34 - BMX-4 Central Business Mix	View: City, Ocean	

Public Remarks: Welcome to Harbor Square! Discover the perfect blend of live, work, and play in this 2-bedroom, 2-bathroom condo situated in the heart of downtown Honolulu. Designed with an efficient layout, each space within the condo is thoughtfully utilized to maximize comfort and convenience. Stay comfortable year-round with central air conditioning. Plus, the maintenance fee covers electricity, internet, and cable TV, making this a truly hassle-free living experience. Parking is a breeze with monthly options available directly through the building. Enjoy the ease of living in a prime location where everything you need is just a short stroll away. Whether you're heading to the financial district for work, or indulging in the nearby array of restaurants, shops, and nightlife, you'll appreciate the walkability of this neighborhood. **Sale Conditions:** None **Schools:** , , * [Request Showing](#), [Photos](#), [History](#), [Maps](#), [Deed](#), [Watch List](#), [Tax Info](#)





Address	Price	Bd & Bth	Living / Avg.	Land Avg.	DOM
225 Queen Street 22E	\$399,000	2 & 2/0	604 \$661	67,910 \$6	2

Address	Tax Maint. Ass.	Assessed Land	Assessed Building	Assessed Total	Ratio	Year & Remodeled
225 Queen Street 22E	\$75 \$1,128 \$0	\$40,500	\$375,200	\$415,700	96%	1971 & NA

[225 Queen Street 22E](#) - MLS#: [202416110](#) - Welcome to Harbor Square! Discover the perfect blend of live, work, and play in this 2-bedroom, 2-bathroom condo situated in the heart of downtown Honolulu. Designed with an efficient layout, each space within the condo is thoughtfully utilized to maximize comfort and convenience. Stay comfortable year-round with central air conditioning. Plus, the maintenance fee covers electricity, internet, and cable TV, making this a truly hassle-free living experience. Parking is a breeze with monthly options available directly through the building. Enjoy the ease of living in a prime location where everything you need is just a short stroll away. Whether you're heading to the financial district for work, or indulging in the nearby array of restaurants, shops, and nightlife, you'll appreciate the walkability of this neighborhood. **Region:** Metro **Neighborhood:** Downtown **Condition:** Average **Parking:** None, Guest **Total Parking:** 0 **View:** City, Ocean **Frontage:** **Pool:** **Zoning:** 34 - BMX-4 Central Business Mix **Sale Conditions:** None **Schools:** , , *

[Request Showing](#), [Photos](#), [History](#), [Maps](#), [Deed](#), [Watch List](#), [Tax Info](#)

DOM = Days on Market