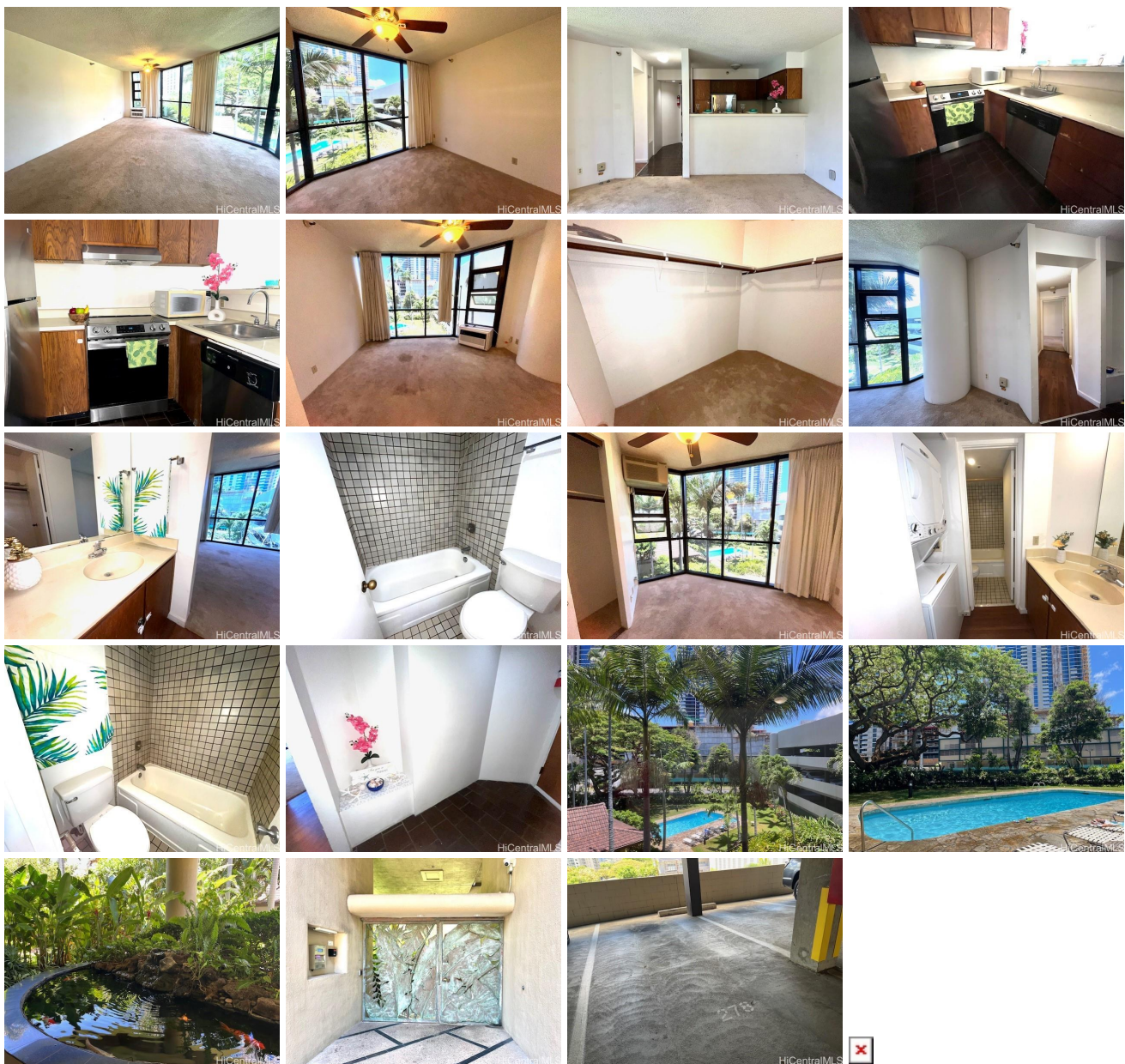


**Hale Kaheka 930 Kaheka Street Unit 302, Honolulu 96814 \* Hale Kaheka \* \$570,000**

|   |   |                                |
|---|---|--------------------------------|
| Beds: <b>2</b>  | MLS#: <b>202416191, FS</b>                        | Year Built: <b>1982</b>        |
| Bath: <b>2/0</b>  | Status: <b>Active</b>                             | Remodeled:                     |
| Living Sq. Ft.: <b>902</b>                                      | List Date & DOM: <b>07-15-2024 &amp; 2</b>        | Total Parking: <b>1</b>        |
| Land Sq. Ft.: <b>0</b>  | Condition: <b>Average</b>                         | <a href="#">Assessed Value</a> |
| Lanai Sq. Ft.: <b>0</b>   | Frontage:   | Building: <b>\$478,400</b>     |
| Sq. Ft. Other: <b>0</b>   | Tax/Year: <b>\$163/2023</b>                       | Land: <b>\$108,200</b>         |
| Total Sq. Ft. <b>902</b>  | Neighborhood: <b>Pawaa</b>                        | Total: <b>\$586,600</b>        |
| Maint./Assoc. <b>\$1,092 / \$0</b>                              | <a href="#">Flood Zone</a> : <b>Zone X - Tool</b> | Stories / CPR: <b>21+ / No</b> |
| Parking: <b>Covered - 1</b>                                     | Frontage:   |                                |
| <a href="#">Zoning</a> : <b>13 - A-3 High Density Apartment</b> | View: <b>Garden</b>                               |                                |

**Public Remarks:** Rarely available spacious two bed and two bathroom unit overlooking the beautiful garden and the pool. Must see the extra large walk in closet. The parking stall is on the same floor conveniently, you don't have to use the elevator. You will enjoy at the common area including the cavana, koi pond and tropical theme landscaping. Hale Kaheka is built in 1982, sprinklers are in the unit as the newer building in this area. Pet friendly condo. Close to Don Quijote, Walmart, Ala Moana Shopping Center, restaurants, banks, post office and bus stops. **Sale Conditions:** None **Schools:** , , \* [Request Showing, Photos, History, Maps, Deed, Watch List, Tax Info](#)



| Address                               | Price                     | Bd & Bth | Living / Avg. | Land   Avg. | Lanai | Occ. | FL | DOM |
|---------------------------------------|---------------------------|----------|---------------|-------------|-------|------|----|-----|
| <a href="#">930 Kaheka Street 302</a> | <a href="#">\$570,000</a> | 2 & 2/0  | 902   \$632   | 0   \$inf   | 0     | 55%  | 3  | 2   |

| Address                               | Tax   Maint.   Ass.   | Assessed Land | Assessed Building | Assessed Total | Ratio | Year & Remodeled |
|---------------------------------------|-----------------------|---------------|-------------------|----------------|-------|------------------|
| <a href="#">930 Kaheka Street 302</a> | \$163   \$1,092   \$0 | \$108,200     | \$478,400         | \$586,600      | 97%   | 1982 & NA        |

[930 Kaheka Street 302](#) - MLS#: [202416191](#) - Rarely available spacious two bed and two bathroom unit overlooking the beautiful garden and the pool. Must see the extra large walk in closet. The parking stall is on the same floor conveniently, you don't have to use the elevator. You will enjoy at the common area including the cavana, koi pond and tropical theme landscaping. Hale Kaheka is built in 1982, sprinklers are in the unit as the newer building in this area. Pet friendly condo. Close to Don Quijote, Walmart, Ala Moana Shopping Center, restaurants, banks, post office and bus stops. **Region:** Metro **Neighborhood:** Pawaa **Condition:** Average **Parking:** Covered - 1 **Total Parking:** 1 **View:** Garden **Frontage:** **Pool:** **Zoning:** 13 - A-3 High Density Apartment **Sale Conditions:** None **Schools:** , , \* [Request Showing](#), [Photos](#), [History](#), [Maps](#), [Deed](#), [Watch List](#), [Tax Info](#)

DOM = Days on Market, Occ. = Occupancy, FL = Floor Number