

## **1623 Anakole Street, Pearl City 96782 \* \* \$1,100,000**

Beds: **3**  
Bath: **2/0**  
Living Sq. Ft.: **1,748**  
Land Sq. Ft.: **6,011**  
Lanai Sq. Ft.: **0**  
Sq. Ft. Other: **0**  
Total Sq. Ft. **1,748**  
Maint./Assoc. **\$0 / \$0**

MLS#: **202416249, FS**  
Status: **Active**  
List Date & DOM: **07-16-2024 &**  
Condition: **Excellent**  
Frontage:  
Tax/Year: **\$275/2024**  
Neighborhood: **Momilani**  
**Flood Zone: Zone D - Tool**

Year Built: **1964**  
Remodeled: **2011**  
Total Parking: **4**  
[Assessed Value](#)  
Building: **\$156,000**  
Land: **\$787,900**  
Total: **\$943,900**  
Stories / CPR: **Split Level / No**

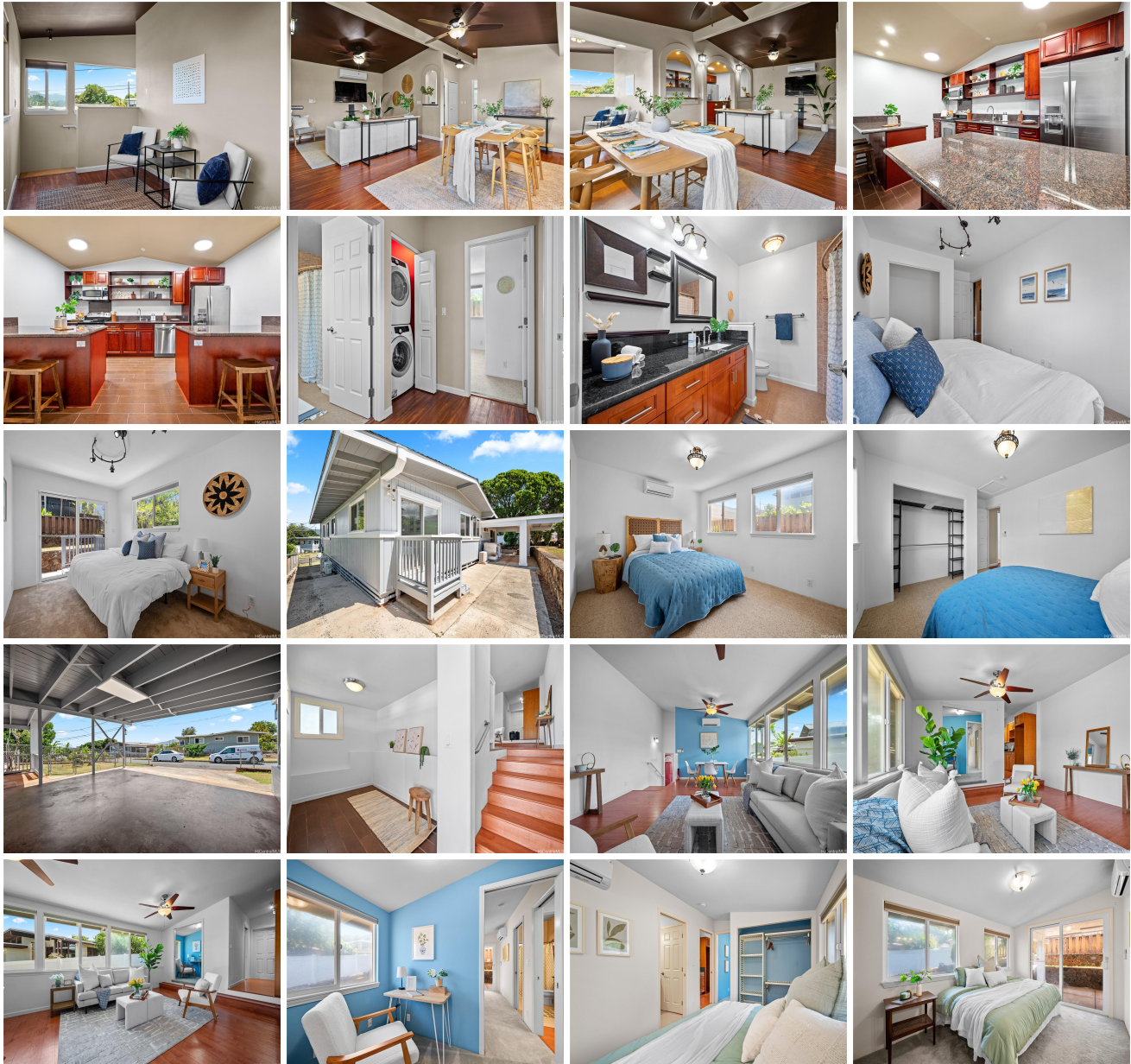
Parking: **3 Car+, Carport, Driveway**

**Zoning: 05 - R-5 Residential District**

Frontage:

View: **Garden, Mountain**

**Public Remarks:** This is the one you've been waiting for in Momilani! Meticulously maintained and upgraded over the years, this property was renovated for multi-generational living and set-up as a duplex with 2-bedrooms & 1-bath on one side, and 1-bedroom with 1-bath plus office/den & covered lanai on the other. Both homes include spacious living areas designed with modern upgrades and an open concept, but can easily be converted back to a single family dwelling. Enjoy the cool comfort of split a/c units throughout the home, energy efficient double paned windows & 18 owned PV panels. Custom designed with a large kitchen, efficient wet bar, and baths that include granite countertops and custom tile finishes. Constructed with the home office in mind, or for the game enthusiast, this home is network capable and wired with data networking plenum cables. Freshly painted and professionally cleaned prior to listing, it's ready for you to move right in. With top top rated schools, sports teams, parks, shopping, dining, and entertainment options galore, this vibrant community continues to be a favorite for generations. Come see why so many continue to choose to call Pearl City...Home! **Sale Conditions:** None **Schools:** [Manana, Highlands, Pearl City](#) \* [Request Showing, Photos, History, Maps, Deed, Watch List, Tax Info](#)





Address	Price	Bd & Bth	Living / Avg.	Land   Avg.	Lanai	Occ.	FL	DOM
<a href="#">1623 Anakole Street</a>	<a href="#">\$1,100,000</a>	3 & 2/0	1,748   \$629	6,011   \$183	0	0%	0	0

Address	Tax   Maint.   Ass.	Assessed Land	Assessed Building	Assessed Total	Ratio	Year & Remodeled
<a href="#">1623 Anakole Street</a>	\$275   \$0   \$0	\$787,900	\$156,000	\$943,900	117%	1964 & 2011

[1623 Anakole Street](#) - MLS#: [202416249](#) - This is the one you've been waiting for in Momilani! Meticulously maintained and upgraded over the years, this property was renovated for multi-generational living and set-up as a duplex with 2-bedrooms & 1-bath on one side, and 1-bedroom with 1-bath plus office/den & covered lanai on the other. Both homes include spacious living areas designed with modern upgrades and an open concept, but can easily be converted back to a single family dwelling. Enjoy the cool comfort of split a/c units throughout the home, energy efficient double paned windows & 18 owned PV panels. Custom designed with a large kitchen, efficient wet bar, and baths that include granite countertops and custom tile finishes. Constructed with the home office in mind, or for the game enthusiast, this home is network capable and wired with data networking plenum cables. Freshly painted and professionally cleaned prior to listing, it's ready for you to move right in. With top top rated schools, sports teams, parks, shopping, dining, and entertainment options galore, this vibrant community continues to be a favorite for generations. Come see why so many continue to choose to call Pearl City...Home!

**Region:** Pearl City **Neighborhood:** Momilani **Condition:** Excellent **Parking:** 3 Car+, Carport, Driveway **Total Parking:** 4  
**View:** Garden, Mountain **Frontage:** **Pool:** None **Zoning:** 05 - R-5 Residential District **Sale Conditions:** None **Schools:** [Manana](#), [Highlands](#), [Pearl City](#) \* [Request Showing](#), [Photos](#), [History](#), [Maps](#), [Deed](#), [Watch List](#), [Tax Info](#)

DOM = Days on Market, Occ. = Occupancy, FL = Floor Number