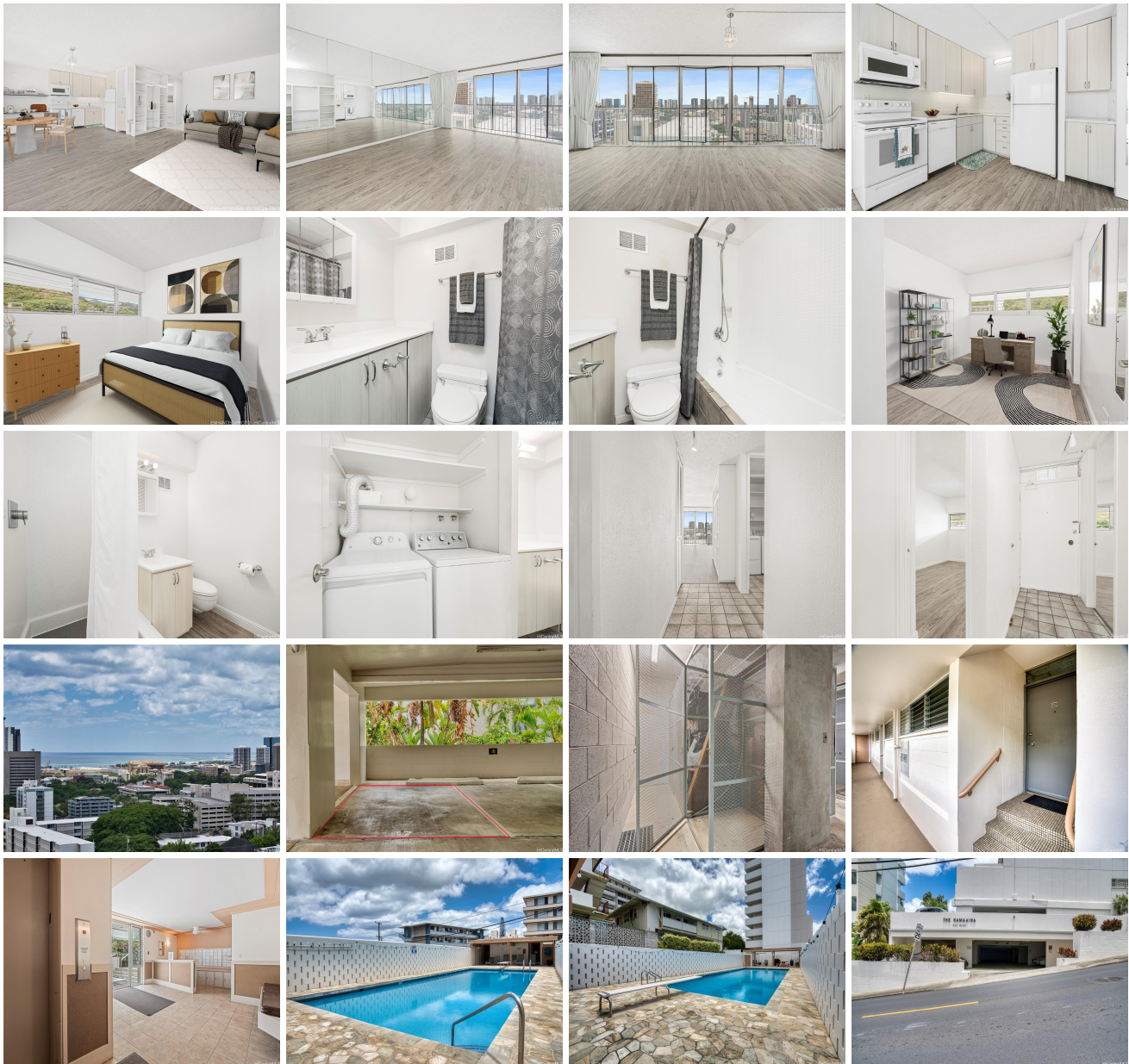


Kamaaina 1520 Ward Avenue Unit 802, Honolulu 96822 * Kamaaina * \$520,000

Beds: 2	MLS#: <u>202416274</u>, FS	Year Built: 1967
Bath: 2/0	Status: Active	Remodeled:
Living Sq. Ft.: 1,012	List Date & DOM: 07-17-2024 & 10	Total Parking: 1
Land Sq. Ft.: 0	Condition: Above Average	Assessed Value
Lanai Sq. Ft.: 0	Frontage:	Building: \$427,800
Sq. Ft. Other: 0	Tax/Year: \$141/2024	Land: \$72,400
Total Sq. Ft. 1,012	Neighborhood: Punchbowl-lower	Total: \$500,200
Maint./Assoc. \$773 / \$0	Flood Zone : Zone X - Tool	Stories / CPR: 8-14 / No
Parking: Assigned, Covered - 1, Guest	Frontage:	
Zoning : 12 - A-2 Medium Density Apartme	View: City, Ocean, Sunset	

Public Remarks: Fantastic opportunity to own a slice of Urban Honolulu! This well-maintained 2-bedroom, 2-bathroom unit features an enclosed lanai, offering over 1,000 sq. ft. of living space. Updates include a remodeled kitchen, luxury vinyl plank floors, renovated bathroom cabinets, countertops, shower, light fixtures, and built-in shelving. The secured building provides amenities such as a pool, BBQ area, patio deck, and a large storage unit. Located at the top of Ward Avenue, you'll be just minutes from the Blaisdell Center, Downtown Honolulu, museums, hospitals, shops, restaurants, a variety of entertainment options, and H-1 Freeway access. Living and Lanai square feet do not match tax records. One or more photos have been enhanced. **Sale Conditions:** None **Schools:** , , * [Request Showing](#), [Photos](#), [History](#), [Maps](#), [Deed](#), [Watch List](#), [Tax Info](#)





Address	Price	Bd & Bth	Living / Avg.	Land Avg.	Lanai	Occ.	FL	DOM
1520 Ward Avenue 802	\$520,000	2 & 2/0	1,012 \$514	0 \$inf	0	68%	8	10

Address	Tax Maint. Ass.	Assessed Land	Assessed Building	Assessed Total	Ratio	Year & Remodeled
1520 Ward Avenue 802	\$141 \$773 \$0	\$72,400	\$427,800	\$500,200	104%	1967 & NA

1520 Ward Avenue 802 - MLS#: 202416274 - Fantastic opportunity to own a slice of Urban Honolulu! This well-maintained 2-bedroom, 2-bathroom unit features an enclosed lanai, offering over 1,000 sq. ft. of living space. Updates include a remodeled kitchen, luxury vinyl plank floors, renovated bathroom cabinets, countertops, shower, light fixtures, and built-in shelving. The secured building provides amenities such as a pool, BBQ area, patio deck, and a large storage unit. Located at the top of Ward Avenue, you'll be just minutes from the Blaisdell Center, Downtown Honolulu, museums, hospitals, shops, restaurants, a variety of entertainment options, and H-1 Freeway access. Living and Lanai square feet do not match tax records. One or more photos have been enhanced. Region: Metro Neighborhood: Punchbowl-lower Condition: Above Average Parking: Assigned, Covered - 1, Guest Total Parking: 1 View: City, Ocean, Sunset Frontage: Pool: Zoning: 12 - A-2 Medium Density Apartme Sale Conditions: None Schools: , , * Request Showing , Photos , History , Maps , Deed , Watch List , Tax Info						
---	--	--	--	--	--	--

DOM = Days on Market, Occ. = Occupancy, FL = Floor Number