

837 Kulani Street, Honolulu 96825 * \$1,395,000

Beds: **3**
Bath: **2/0**
Living Sq. Ft.: **1,533**
Land Sq. Ft.: **5,975**
Lanai Sq. Ft.: **180**
Sq. Ft. Other: **0**
Total Sq. Ft. **1,713**
Maint./Assoc. **\$0 / \$0**

MLS#: **202416278, FS**
Status: **Active**
List Date & DOM: **07-16-2024 & 1**
Condition: **Above Average**
Frontage:
Tax/Year: **\$316/2023**
Neighborhood: **Hahaione-upper**
[Flood Zone](#): **Zone D - Tool**

Year Built: **1984**
Remodeled:
Total Parking: **2**
[Assessed Value](#)
Building: **\$206,800**
Land: **\$955,500**
Total: **\$1,162,300**
Stories / CPR: **One / No**

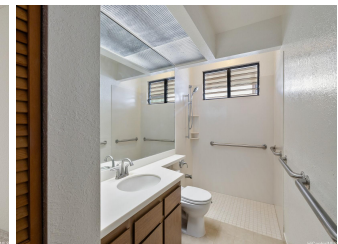
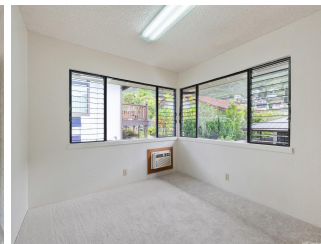
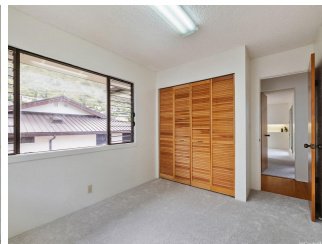
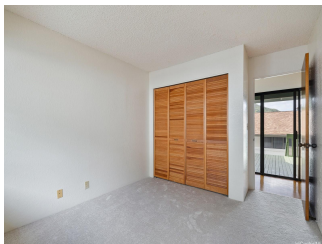
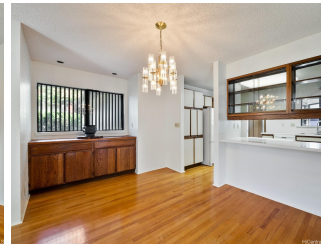
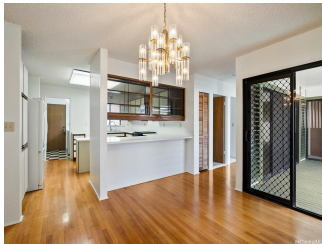
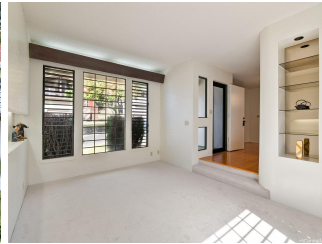
Parking: **2 Car, Driveway, Garage**

[Zoning](#): **05 - R-5 Residential District**

Frontage:

View: **Mountain**

Public Remarks: This is a custom, mostly single level home built in 1984. Freshly painted interior with new carpets and padding. Baths were renovated for easy access to showers and an 'ofuro' bathtub. Lots of fine detail like decorative pot niches, lighted and recessed walls shelves in living room and main bedroom. Sunken living room with views of the mountains. Large formal dining room. Large, extra wide, enclosed garage with lots of storage closets and shelves. Separate laundry room. Formal entry from outside leads onto hardwood floors and you are greeted by a decorative alcove for scrolls or flower arrangements. Fantastic location in the Hahaione school district. **Sale Conditions:** None **Schools:** [Hahaione](#), [Niu Valley](#), [Kaiser](#) * [Request Showing](#), [Photos](#), [History](#), [Maps](#), [Deed](#), [Watch List](#), [Tax Info](#)





Address	Price	Bd & Bth	Living / Avg.	Land Avg.	DOM
837 Kulani Street	\$1,395,000	3 & 2/0	1,533 \$910	5,975 \$233	1

Address	Tax Maint. Ass.	Assessed Land	Assessed Building	Assessed Total	Ratio	Year & Remodeled
837 Kulani Street	\$316 \$0 \$0	\$955,500	\$206,800	\$1,162,300	120%	1984 & NA

[837 Kulani Street](#) - MLS#: [202416278](#) - This is a custom, mostly single level home built in 1984. Freshly painted interior with new carpets and padding. Baths were renovated for easy access to showers and an 'ofuro' bathtub. Lots of fine detail like decorative pot niches, lighted and recessed walls shelves in living room and main bedroom. Sunken living room with views of the mountains. Large formal dining room. Large, extra wide, enclosed garage with lots of storage closets and shelves. Separate laundry room. Formal entry from outside leads onto hardwood floors and you are greeted by a decorative alcove for scrolls or flower arrangements. Fantastic location in the Hahaione school district. **Region:** Hawaii Kai **Neighborhood:** Hahaione-upper **Condition:** Above Average **Parking:** 2 Car, Driveway, Garage **Total Parking:** 2 **View:** Mountain **Frontage:** **Pool:** None **Zoning:** 05 - R-5 Residential District **Sale Conditions:** None **Schools:** [Hahaione](#), [Niu Valley](#), [Kaiser](#) * [Request Showing](#), [Photos](#), [History](#), [Maps](#), [Deed](#), [Watch List](#), [Tax Info](#)

DOM = Days on Market