

Rainbow Terrace 2873 S King Street Unit 201, Honolulu 96826 * Rainbow Terrace *

\$309,000

Beds: **1**
 Bath: **1/0**
 Living Sq. Ft.: **570**
 Land Sq. Ft.: **0**
 Lanai Sq. Ft.: **0**
 Sq. Ft. Other: **0**
 Total Sq. Ft. **570**
 Maint./Assoc. **\$545 / \$0**

MLS#: **202416330, FS**
 Status: **Active**
 List Date & DOM: **07-18-2024 & 9**
 Condition: **Above Average**
 Frontage:
 Tax/Year: **\$67/2024**
 Neighborhood: **Moiliili**
 Flood Zone: **Zone X - Tool**

Year Built: **1969**
 Remodeled:
 Total Parking: **1**
[Assessed Value](#)
 Building: **\$175,200**
 Land: **\$172,300**
 Total: **\$347,500**
 Stories / CPR: / **No**

Parking: **Assigned, Open - 1**

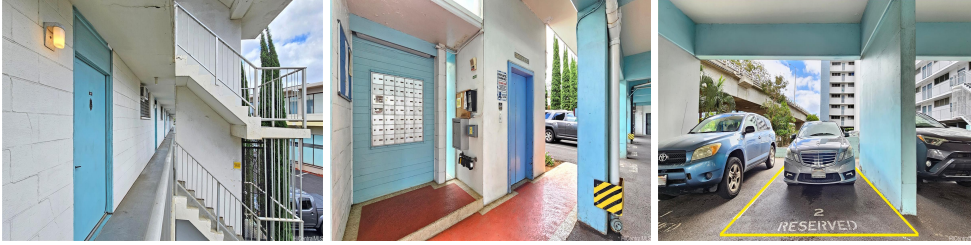
Zoning: **33 - BMX-3 Community Business M**

Frontage:

View: **None**

Public Remarks: Welcome home! Come see this cozy 1-bed, 1-bath home nestled in a prime location with unparalleled access to nearby shops and shopping centers, restaurants, entertainment options and minutes from Waikiki, UH Manoa, Kapiolani Community College, Punahou, Iolani, Ala Moana. Perfect for those seeking convenience and vibrant lifestyle. This end unit provides added privacy and a great air flow. Enjoy an open layout and a spacious living space, prepare tasty meals on your gas stove. This 3-story building has an elevator, washers and dryers on each floor, PV panels to keep the electrical bill low and affordable maintenance fees. To add to the convenience - the parking stall is right across the stairwell which leads straight to this corner unit. Don't miss on a fantastic opportunity, come take a look now. **Sale Conditions:** None **Schools:** [Kuhio](#), [Washington](#), [Kaimuki](#) * [Request Showing](#), [Photos](#), [History](#), [Maps](#), [Deed](#), [Watch List](#), [Tax Info](#)





Address	Price	Bd & Bth	Living / Avg.	Land Avg.	Lanai	Occ.	FL	DOM
2873 S King Street 201	\$309,000	1 & 1/0	570 \$542	0 \$inf	0	25%	2	9

Address	Tax Maint. Ass.	Assessed Land	Assessed Building	Assessed Total	Ratio	Year & Remodeled
2873 S King Street 201	\$67 \$545 \$0	\$172,300	\$175,200	\$347,500	89%	1969 & NA

[2873 S King Street 201](#) - MLS#: [202416330](#) - Welcome home! Come see this cozy 1-bed, 1-bath home nestled in a prime location with unparalleled access to nearby shops and shopping centers, restaurants, entertainment options and minutes from Waikiki, UH Manoa, Kapiolani Community College, Punahou, Iolani, Ala Moana. Perfect for those seeking convenience and vibrant lifestyle. This end unit provides added privacy and a great air flow. Enjoy an open layout and a spacious living space, prepare tasty meals on your gas stove. This 3-story building has an elevator, washers and dryers on each floor, PV panels to keep the electrical bill low and affordable maintenance fees. To add to the convenience - the parking stall is right across the stairwell which leads straight to this corner unit. Don't miss on a fantastic opportunity, come take a look now.

Region: Metro **Neighborhood:** Moiliili **Condition:** Above Average **Parking:** Assigned, Open - 1 **Total Parking:** 1 **View:** None **Frontage:** Pool: **Zoning:** 33 - BMX-3 Community Business M **Sale Conditions:** None **Schools:** [Kuhio](#), [Washington](#), [Kaimuki](#) * [Request Showing](#), [Photos](#), [History](#), [Maps](#), [Deed](#), [Watch List](#), [Tax Info](#)

DOM = Days on Market, Occ. = Occupancy, FL = Floor Number