

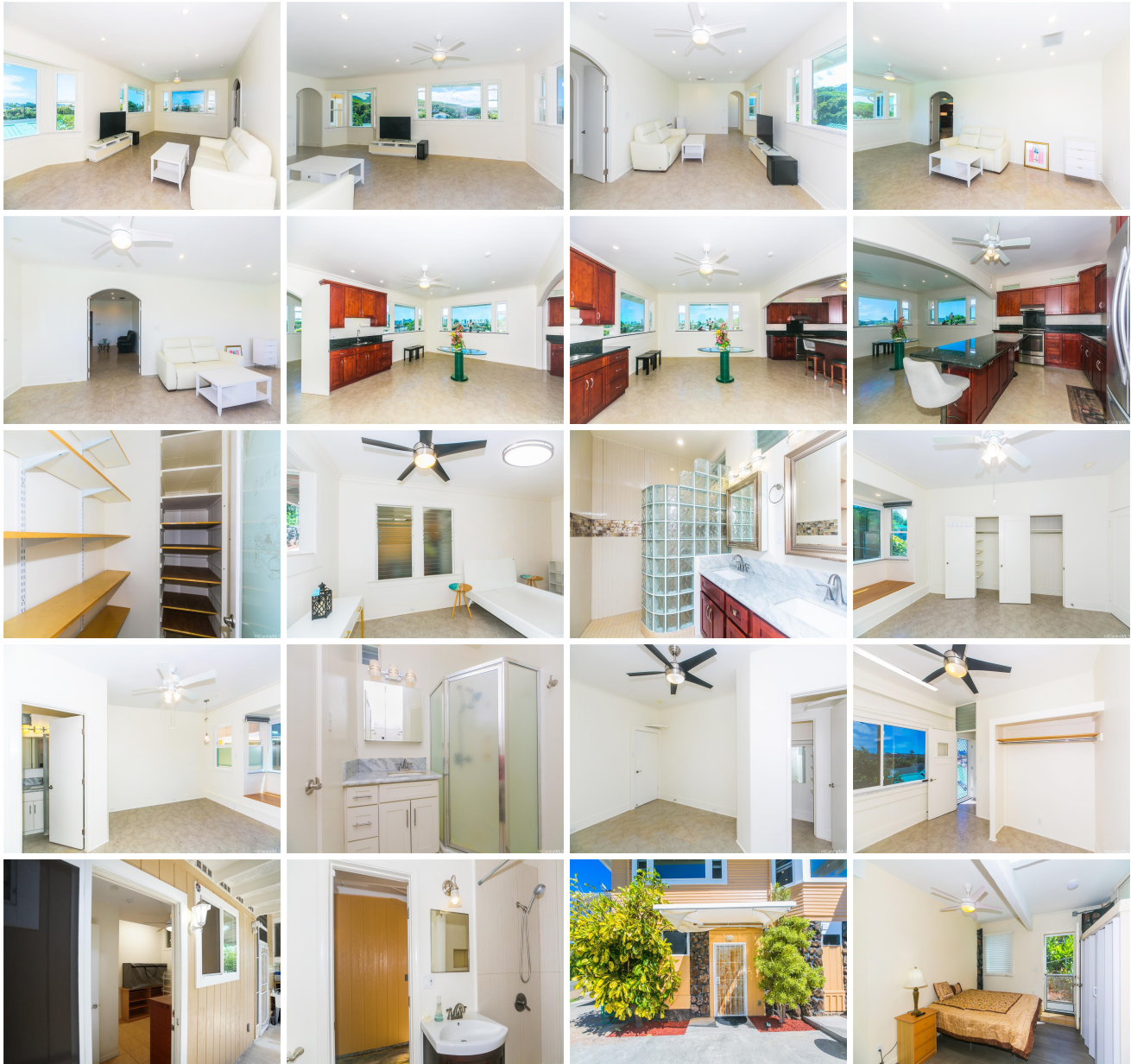
**2142 Damon Street, Honolulu 96822 \* \$2,680,000**

Beds: <b>8</b>	MLS#: <b>202416384, FS</b>	Year Built: <b>1926</b>
Bath: <b>7/0</b>	Status: <b>Active</b>	Remodeled: <b>2024</b>
Living Sq. Ft.: <b>3,968</b>	List Date & DOM: <b>07-18-2024 &amp; 9</b>	Total Parking: <b>6</b>
Land Sq. Ft.: <b>7,975</b>	Condition: <b>Excellent</b>	<a href="#">Assessed Value</a>
Lanai Sq. Ft.: <b>0</b>	Frontage:	Building: <b>\$160,000</b>
Sq. Ft. Other: <b>0</b>	Tax/Year: <b>\$462/2024</b>	Land: <b>\$1,585,000</b>
Total Sq. Ft. <b>3,968</b>	Neighborhood: <b>Manoa-lower</b>	Total: <b>\$1,745,000</b>
Maint./Assoc. <b>\$0 / \$0</b>	<a href="#">Flood Zone</a> : <b>Zone X - Tool</b>	Stories / CPR: <b>Two / No</b>
Parking: <b>3 Car+, Driveway</b>	Frontage:	

**Zoning: 05 - R-5 Residential District**

View: **City, Coastline, Diamond Head, Garden, Mountain, Ocean, Sunrise**

**Public Remarks:** FIRST 10 Offers to get this classic home. Diamond Head and the Waikiki Shoreline/City VIEW from your livingroom & Dining , such views from all four picture windows! NEWLY RENOVATED, 30 solar panels, 4 Mitsubishi AC ready to be installed. Incredible 8Br/7Ba, 6+ parkings, upstairs 4BR/3BR with Kitchen granite countertops & walk-in pantry & attached guest 1BR/1BA, & a nice storage. The guest/maid's 1BD/1BA has a separate entrance from the main area. The detached storage room/workshop has a nicely finished interior with natural light, high ceiling, and lava rock accent wall. Enjoy dinners at your very own private deck overlooking the fertile garden filled with Dragon fruit, pineapple, papaya, lemon, and aloe. Downstair three separate 1BR/1BAs. With all these many rooms available to live in and rent out, or to rent all out to get maximum investment income. Near UH & Punahou, Noelani, Mid-Pac, and Iolani School. Plentiful street parking available. Minutes to freeway, East or West on-ramps. Only 7 minutes to Waikiki. Sunday Open House 2-5pm. **Sale Conditions:** None  
**Schools:** [Noelani](#), [Stevenson](#), [Roosevelt](#) \* [Request Showing](#), [Photos](#), [History](#), [Maps](#), [Deed](#), [Watch List](#), [Tax Info](#)





Address	Price	Bd & Bth	Living / Avg.	Land   Avg.	DOM
<a href="#">2142 Damon Street</a>	<a href="#">\$2,680,000</a>	8 & 7/0	3,968   \$675	7,975   \$336	9

Address	Tax   Maint.   Ass.	Assessed Land	Assessed Building	Assessed Total	Ratio	Year & Remodeled
<a href="#">2142 Damon Street</a>	\$462   \$0   \$0	\$1,585,000	\$160,000	\$1,745,000	154%	1926 & 2024

[2142 Damon Street](#) - MLS#: [202416384](#) - FIRST 10 Offers to get this classic home. Diamond Head and the Waikiki Shoreline/City VIEW from your livingroom & Dining , such views from all four picture windows! NEWLY RENOVATED, 30 solar panels, 4 Mitsubishi AC ready to be installed. Incredible 8Br/7Ba, 6+ parkings, upstairs 4BR/3BR with Kitchen granite countertops & walk-in pantry & attached guest 1BR/1BA, & a nice storage. The guest/maid's 1BD/1BA has a separate entrance from the main area. The detached storage room/workshop has a nicely finished interior with natural light, high ceiling, and lava rock accent wall. Enjoy dinners at your very own private deck overlooking the fertile garden filled with Dragon fruit, pineapple, papaya, lemon, and aloe. Downstair three separate 1BR/1BAs. With all these many rooms available to live in and rent out, or to rent all out to get maximum investment income. Near UH & Punahou, Noelani, Mid-Pac, and Iolani School. Plentiful street parking available. Minutes to freeway, East or West on-ramps. Only 7 minutes to Waikiki. Sunday Open House 2-5pm. **Region:** Metro **Neighborhood:** Manoa-lower **Condition:** Excellent **Parking:** 3 Car+, Driveway **Total Parking:** 6 **View:** City, Coastline, Diamond Head, Garden, Mountain, Ocean, Sunrise **Frontage:** **Pool:** None **Zoning:** 05 - R-5 Residential District **Sale Conditions:** None **Schools:** [Noelani](#), [Stevenson](#), [Roosevelt](#) \* [Request Showing](#), [Photos](#), [History](#), [Maps](#), [Deed](#), [Watch List](#), [Tax Info](#)

DOM = Days on Market