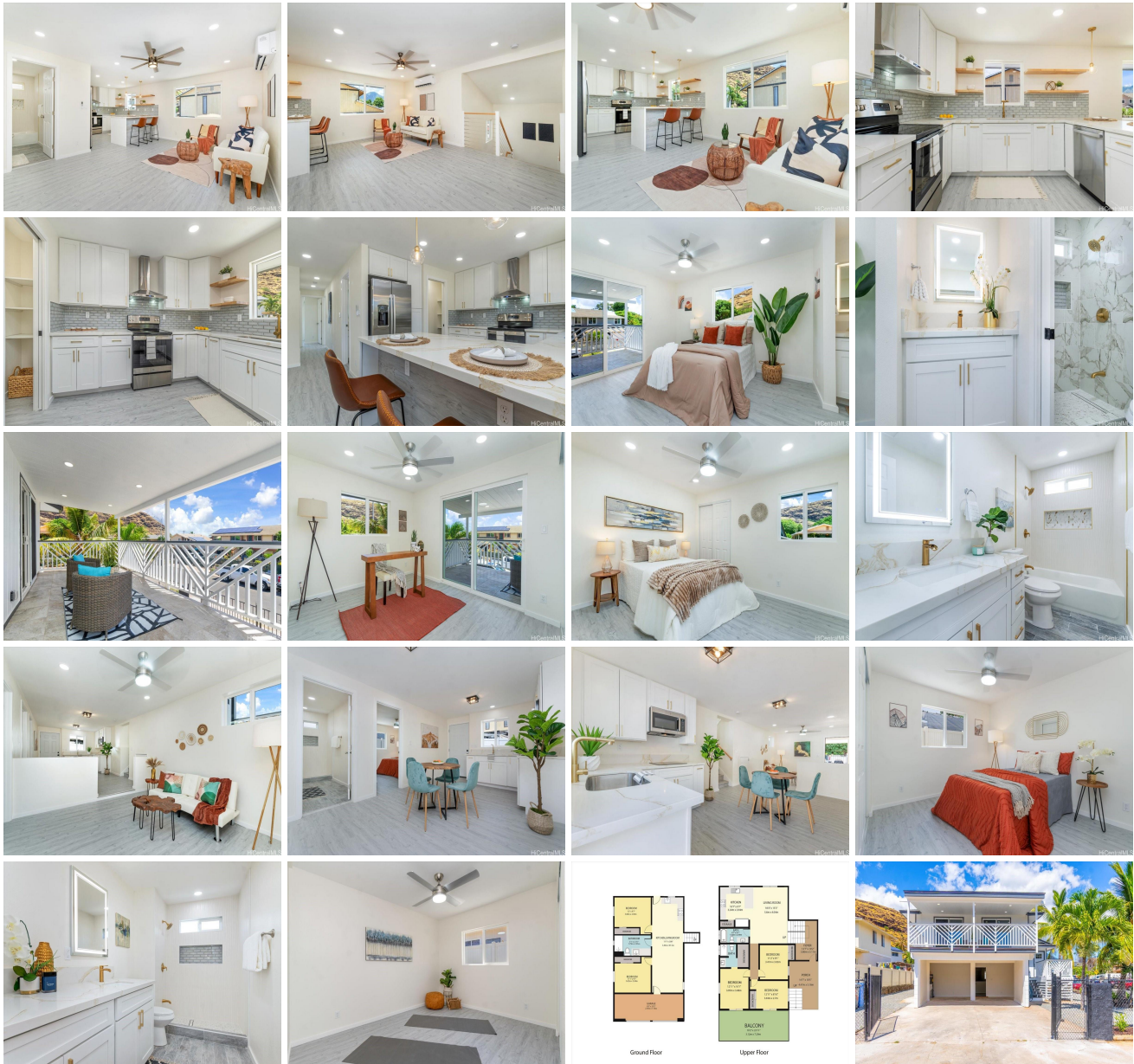


86-906 Hale Ekahi Drive, Waianae 96792 * \$898,000

Beds: 5	MLS#: 202416385, FS	Year Built: 1974
Bath: 3/0	Status: Active	Remodeled: 2024
Living Sq. Ft.: 1,546	List Date & DOM: 07-22-2024 & 5	Total Parking: 4
Land Sq. Ft.: 5,382	Condition: Excellent	Assessed Value
Lanai Sq. Ft.: 214	Frontage:	Building: \$147,500
Sq. Ft. Other: 0	Tax/Year: \$177/2024	Land: \$433,100
Total Sq. Ft. 1,760	Neighborhood: Lualualei	Total: \$580,600
Maint./Assoc. \$0 / \$0	Flood Zone : Zone D - Tool	Stories / CPR: Two / No
Parking: 3 Car+, Carport, Driveway	Frontage:	
Zoning : 05 - R-5 Residential District	View: City, Mountain	

Public Remarks: Visit 1st OPEN HOUSE on July 28th at 12pm-5pm. A great extended Ohana living! This corner lot home offers a spacious, functional, an efficient and flexible floor plan consist of 3-bdrm, 2-bath on the main 2-story home with interior staircase to the lower ground level featuring 2-bdrm, 1-bath, a kitchenette and separate entrance, perfect for extended family, aging in-place living or generate some rental income. Completely remodeled from floor to ceiling with new windows, doors, flooring, kitchen, baths, appliances, plumbing, electrical, roof and so many more to appreciate. Relax on the front open lanai with great mountain views and/or enjoy the large covered patio deck. Features fenced-in yard perfect for kids to play, pets and outdoor gathering. Plenty of parking spaces with 2 covered carport, and comfortably 3-4 additional parking spaces. Located in the residential community of Pokai Bay Estates with short distances to Tamura Super Market, local eateries, shops, Pokai Bay Beach and many more essentials within greater Lualualei neighborhood. **Sale Conditions:** None
Schools: [Leihoku](#), [Waianae](#), [Waianae](#) * [Request Showing](#), [Photos](#), [History](#), [Maps](#), [Deed](#), [Watch List](#), [Tax Info](#)





Address	Price	Bd & Bth	Living / Avg.	Land Avg.	DOM
86-906 Hale Ekahi Drive	\$898,000	5 & 3/0	1,546 \$581	5,382 \$167	5

Address	Tax Maint. Ass.	Assessed Land	Assessed Building	Assessed Total	Ratio	Year & Remodeled
86-906 Hale Ekahi Drive	\$177 \$0 \$0	\$433,100	\$147,500	\$580,600	155%	1974 & 2024

[86-906 Hale Ekahi Drive](#) - MLS#: [202416385](#) - Visit 1st OPEN HOUSE on July 28th at 12pm-5pm. A great extended Ohana living! This corner lot home offers a spacious, functional, an efficient and flexible floor plan consist of 3-bdrm, 2-bath on the main 2-story home with interior staircase to the lower ground level featuring 2-bdrm, 1-bath, a kitchenette and separate entrance, perfect for extended family, aging in-place living or generate some rental income. Completely remodeled from floor to ceiling with new windows, doors, flooring, kitchen, baths, appliances, plumbing, electrical, roof and so many more to appreciate. Relax on the front open lanai with great mountain views and/or enjoy the large covered patio deck. Features fenced-in yard perfect for kids to play, pets and outdoor gathering. Plenty of parking spaces with 2 covered carport, and comfortably 3-4 additional parking spaces. Located in the residential community of Pokai Bay Estates with short distances to Tamura Super Market, local eateries, shops, Pokai Bay Beach and many more essentials within greater Lualualei neighborhood. **Region:** Leeward **Neighborhood:** Lualualei **Condition:** Excellent **Parking:** 3 Car+, Carport, Driveway **Total Parking:** 4 **View:** City, Mountain **Frontage:** **Pool:** None **Zoning:** 05 - R-5 Residential District **Sale Conditions:** None **Schools:** [Leihoku](#), [Waianae](#), [Waianae](#) * [Request Showing](#), [Photos](#), [History](#), [Maps](#), [Deed](#), [Watch List](#), [Tax Info](#)

DOM = Days on Market