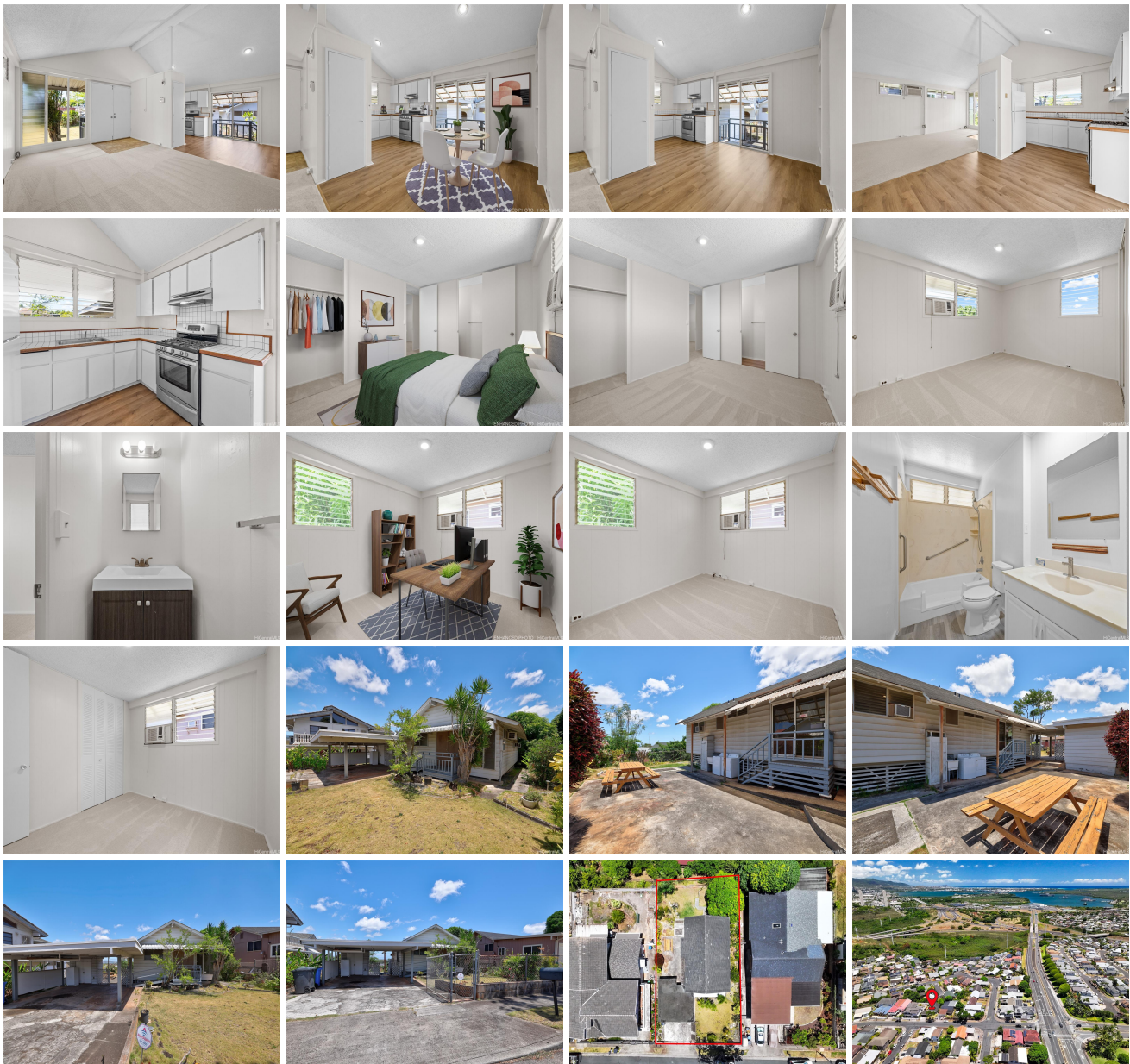


**94-1025 Lumiauau Street, Waipahu 96797 \* \$898,000**

Beds: <b>3</b>	MLS#: <b>202416621, FS</b>	Year Built: <b>1970</b>
Bath: <b>1/1</b>	Status: <b>Active</b>	Remodeled:
Living Sq. Ft.: <b>960</b>	List Date & DOM: <b>07-22-2024 &amp; 5</b>	Total Parking: <b>4</b>
Land Sq. Ft.: <b>6,300</b>	Condition: <b>Average</b>	<a href="#">Assessed Value</a>
Lanai Sq. Ft.: <b>0</b>	Frontage:	Building: <b>\$35,800</b>
Sq. Ft. Other: <b>0</b>	Tax/Year: <b>\$195/2024</b>	Land: <b>\$791,800</b>
Total Sq. Ft. <b>960</b>	Neighborhood: <b>Seaview</b>	Total: <b>\$827,600</b>
Maint./Assoc. <b>\$0 / \$0</b>	<a href="#">Flood Zone</a> : <b>Zone X - Tool</b>	Stories / CPR: <b>One / No</b>
Parking: <b>3 Car+, Carport, Driveway, Street</b>	Frontage:	
<a href="#">Zoning</a> : <b>05 - R-5 Residential District</b>	View: <b>City, Ocean</b>	

**Public Remarks:** Fantastic opportunity to own a home in the desirable Seaview neighborhood. This 3-bedroom, 1.5-bathroom home offers new flooring and fresh paint throughout the interior. The property sits on a generous 6,300 sq. ft. level lot, fully fenced and gated, with a spacious carport and ample front, side, and back yards. Enjoy a super convenient location, just a short distance from the H-1 and H-2 freeways, Waikale Outlet Shopping Center, golf courses, community parks, military installations, shops, eateries, and more. One or more photos have been enhanced. **Sale Conditions:** None **Schools:** , , \*  
[Request Showing](#), [Photos](#), [History](#), [Maps](#), [Deed](#), [Watch List](#), [Tax Info](#)





Address	Price	Bd & Bth	Living / Avg.	Land   Avg.	DOM
<a href="#">94-1025 Lumiauau Street</a>	<a href="#">\$898,000</a>	3 & 1/1	960   \$935	6,300   \$143	5

Address	Tax   Maint.   Ass.	Assessed Land	Assessed Building	Assessed Total	Ratio	Year & Remodeled
<a href="#">94-1025 Lumiauau Street</a>	\$195   \$0   \$0	\$791,800	\$35,800	\$827,600	109%	1970 & NA

<a href="#">94-1025 Lumiauau Street</a> - MLS#: <a href="#">202416621</a> - Fantastic opportunity to own a home in the desirable Seaview neighborhood. This 3-bedroom, 1.5-bathroom home offers new flooring and fresh paint throughout the interior. The property sits on a generous 6,300 sq. ft. level lot, fully fenced and gated, with a spacious carport and ample front, side, and back yards. Enjoy a super convenient location, just a short distance from the H-1 and H-2 freeways, Waikale Outlet Shopping Center, golf courses, community parks, military installations, shops, eateries, and more. One or more photos have been enhanced. <b>Region:</b> Waipahu <b>Neighborhood:</b> Seaview <b>Condition:</b> Average <b>Parking:</b> 3 Car+, Carport, Driveway, Street <b>Total Parking:</b> 4 <b>View:</b> City, Ocean <b>Frontage:</b> <b>Pool:</b> None <b>Zoning:</b> 05 - R-5 Residential District <b>Sale Conditions:</b> None <b>Schools:</b> , , * <a href="#">Request Showing</a> , <a href="#">Photos</a> , <a href="#">History</a> , <a href="#">Maps</a> , <a href="#">Deed</a> , <a href="#">Watch List</a> , <a href="#">Tax Info</a>						
---	--	--	--	--	--	--

DOM = Days on Market