

Waikiki Skytower 2410 Cleghorn Street Unit 2803, Honolulu 96815 * Waikiki Skytower *

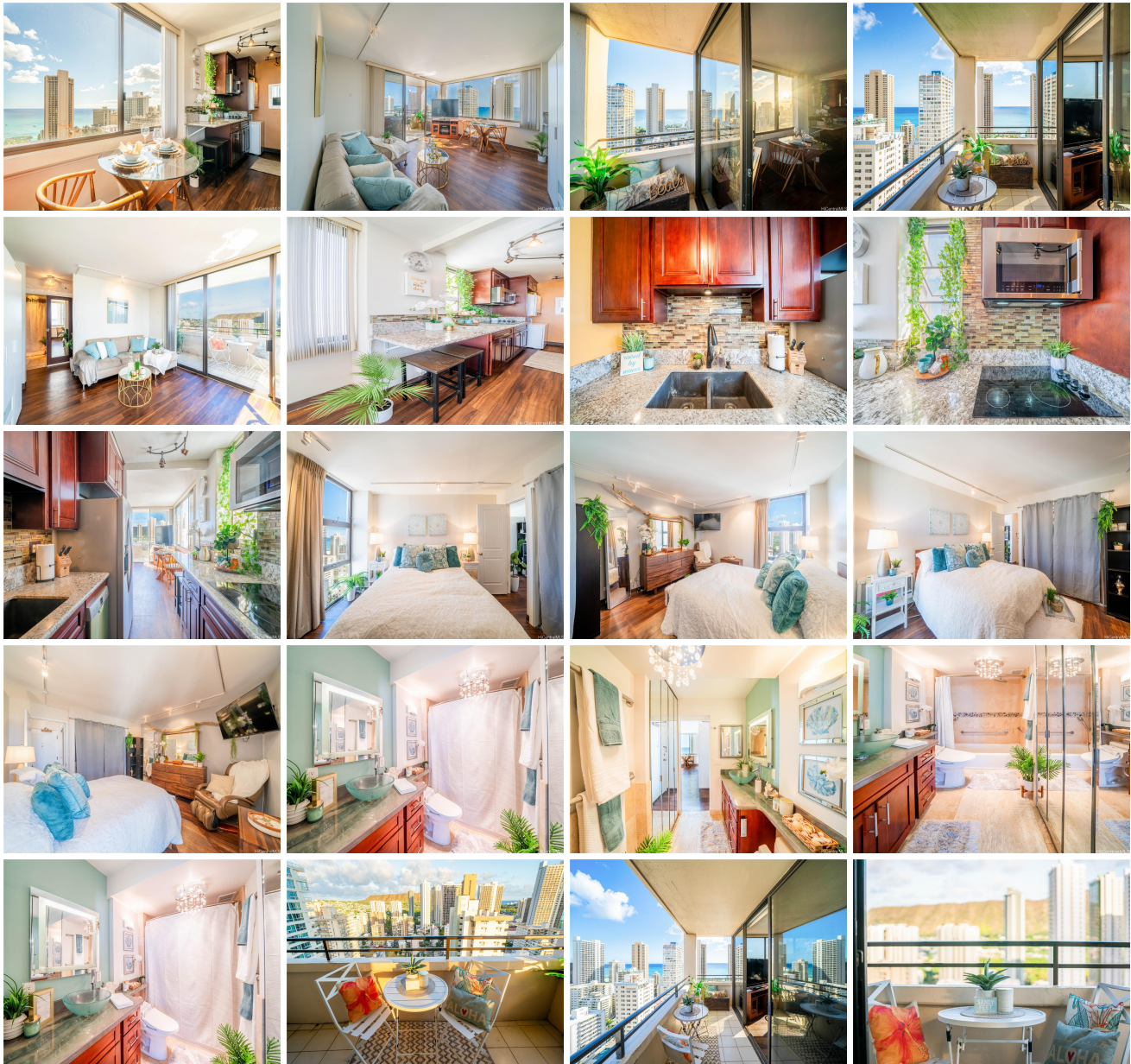
\$599,000

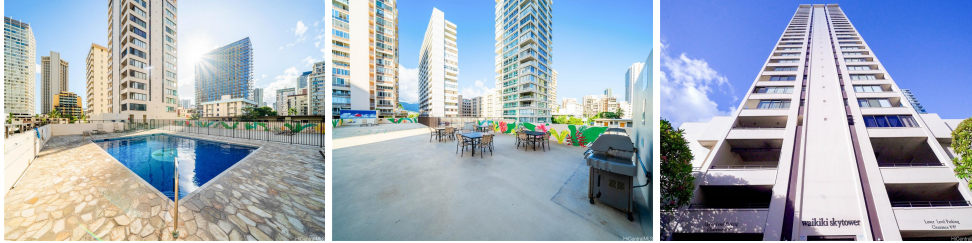
Beds: 1	MLS#: 202416736, FS	Year Built: 1978
Bath: 1/0	Status: Active	Remodeled:
Living Sq. Ft.: 602	List Date & DOM: 07-23-2024 & 4	Total Parking: 2
Land Sq. Ft.: 22,041	Condition: Above Average	Assessed Value
Lanai Sq. Ft.: 90	Frontage:	Building: \$421,800
Sq. Ft. Other: 0	Tax/Year: \$109/2024	Land: \$74,100
Total Sq. Ft. 692	Neighborhood: Waikiki	Total: \$495,900
Maint./Assoc. \$1,109 / \$0	Flood Zone : Zone AE - Tool	Stories / CPR: 21+ / No
Parking: Assigned, Covered - 2, Garage, Tandem	Frontage:	

[Zoning](#): **X2 - Apartment Precinct**

View: **City, Diamond Head, Ocean, Sunrise**

Public Remarks: Welcome to your paradise just 4 blocks from Waikiki Beach! This stunning 1-bedroom, 1-bathroom condo on the 28th floor offers modern elegance and island charm, with spectacular views. The spacious living room, bathed in natural light from two walls of windows, highlights panoramic ocean & Diamond Head vistas. The updated kitchen boasts granite countertops, stainless steel appliances, and ample storage. Enjoy cooking with ocean views or entertain guests in the adjacent dining area. The bathroom features a unique tub/shower with a rain shower and hand held spray, an elegant vessel sink, and a custom rare purple quartzite-topped cabinet. This serene retreat is perfect for unwinding after exploring the island. Facing East, this condo shields you from the intense afternoon sun, ensuring year-round comfort. Relax on the private ocean-view balcony, savor the Hawaiian sunrise, or enjoy a glass of wine as Waikiki's lights come alive at night. Schedule a showing today and start living the Hawaiian dream! **Sale Conditions:** None **Schools:** , , * [Request Showing](#), [Photos](#), [History](#), [Maps](#), [Deed](#), [Watch List](#), [Tax Info](#)





Address	Price	Bd & Bth	Living / Avg.	Land Avg.	Lanai	Occ.	FL	DOM
2410 Cleghorn Street 2803	\$599,000	1 & 1/0	602 \$995	22,041 \$27	90	22%	28	4

Address	Tax Maint. Ass.	Assessed Land	Assessed Building	Assessed Total	Ratio	Year & Remodeled
2410 Cleghorn Street 2803	\$109 \$1,109 \$0	\$74,100	\$421,800	\$495,900	121%	1978 & NA

[2410 Cleghorn Street 2803](#) - MLS#: [202416736](#) - Welcome to your paradise just 4 blocks from Waikiki Beach! This stunning 1-bedroom, 1-bathroom condo on the 28th floor offers modern elegance and island charm, with spectacular views. The spacious living room, bathed in natural light from two walls of windows, highlights panoramic ocean & Diamond Head vistas. The updated kitchen boasts granite countertops, stainless steel appliances, and ample storage. Enjoy cooking with ocean views or entertain guests in the adjacent dining area. The bathroom features a unique tub/shower with a rain shower and hand held spray, an elegant vessel sink, and a custom rare purple quartzite-topped cabinet. This serene retreat is perfect for unwinding after exploring the island. Facing East, this condo shields you from the intense afternoon sun, ensuring year-round comfort. Relax on the private ocean-view balcony, savor the Hawaiian sunrise, or enjoy a glass of wine as Waikiki's lights come alive at night. Schedule a showing today and start living the Hawaiian dream! **Region:** Metro **Neighborhood:** Waikiki **Condition:** Above Average **Parking:** Assigned, Covered - 2, Garage, Tandem **Total Parking:** 2 **View:** City, Diamond Head, Ocean, Sunrise **Frontage:** **Pool:** **Zoning:** X2 - Apartment Precinct **Sale Conditions:** None **Schools:** , , * [Request Showing](#), [Photos](#), [History](#), [Maps](#), [Deed](#), [Watch List](#), [Tax Info](#)

DOM = Days on Market, Occ. = Occupancy, FL = Floor Number