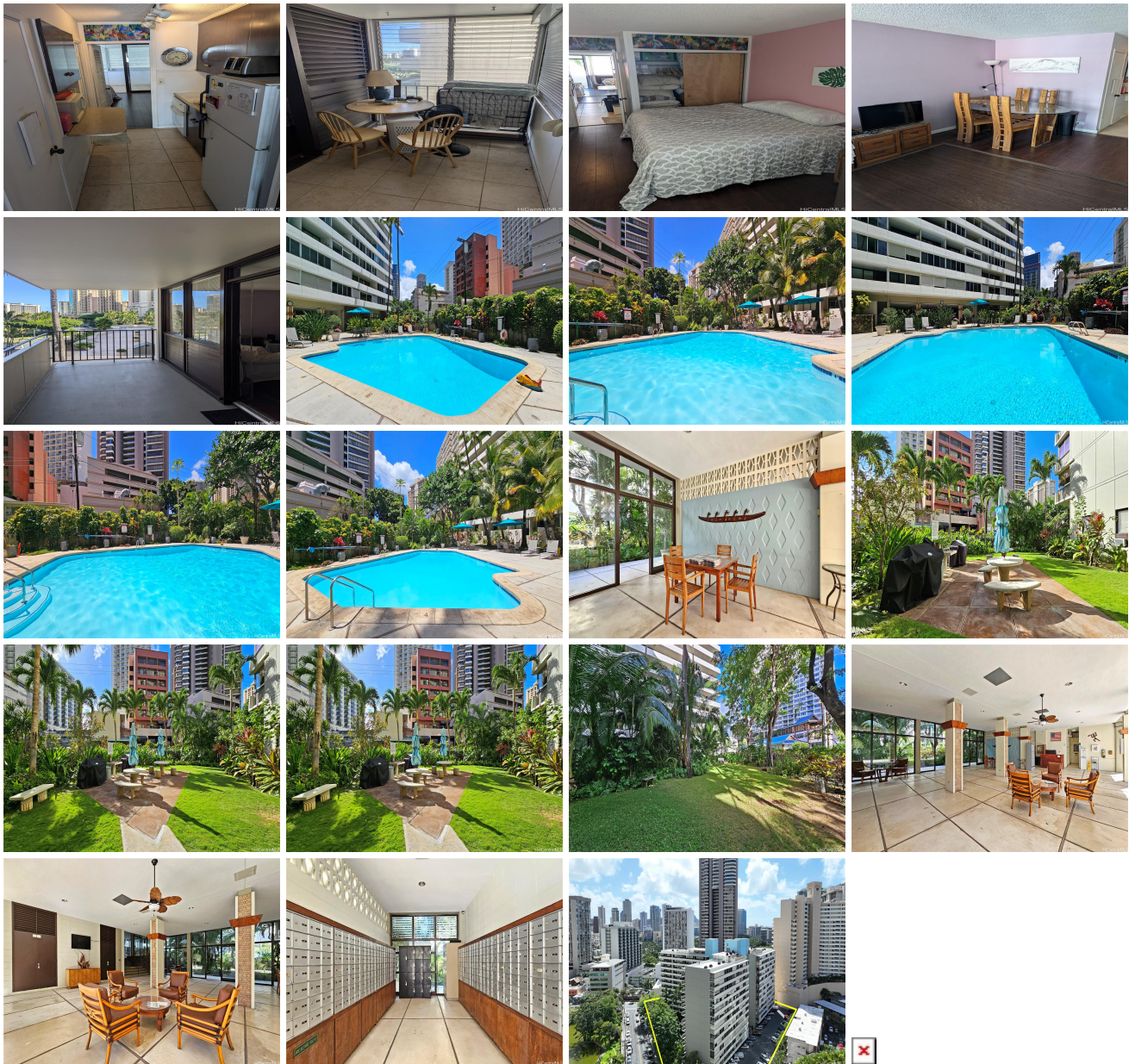


**Kalia 425 Ena Road Unit 608B, Honolulu 96815 \* Kalia \* \$78,000**

Beds: <b>1</b>	MLS#: <b>202416840, LH</b>	Year Built: <b>1958</b>
Bath: <b>1/0</b>	Status: <b>Active</b>	Remodeled:
Living Sq. Ft.: <b>588</b>	List Date & DOM: <b>07-25-2024 &amp; 2</b>	Total Parking: <b>0</b>
Land Sq. Ft.: <b>0</b>	Condition: <b>Fair</b>	<a href="#">Assessed Value</a>
Lanai Sq. Ft.: <b>0</b>	Frontage:	Building: <b>\$235,600</b>
Sq. Ft. Other: <b>0</b>	Tax/Year: <b>\$0/2024</b>	Land: <b>\$97,900</b>
Total Sq. Ft. <b>588</b>	Neighborhood: <b>Waikiki</b>	Total: <b>\$333,500</b>
Maint./Assoc. <b>\$673 / \$0</b>	<a href="#">Flood Zone</a> : <b>Zone X - Tool</b>	Stories / CPR: / <b>No</b>
Parking: <b>Open, Other, Street</b>	Frontage:	
<a href="#">Zoning</a> : <b>X2 - Apartment Precinct</b>	View: <b>City, Diamond Head, Garden, Sunrise</b>	

**Public Remarks:** Contractor special! this CORNER/end unit apartment is ready for your vision and special touch! enjoy RARE FEATURE of Diamond Head view from your lanai. Kalia is a secure gated community with well maintained lush garden grounds, heated saltwater pool & security patrol. Building B location is closest to Hilton Hawaiian Village and Waikiki Beaches. Long lease expires in 2048. Pets allowed (please verify). Maintenance fee includes utilities, cable and property tax. Tax records reflect 2024 tax year. MUST SEE! Visit our 1st Open House Saturday 7/27, 2-5pm **Sale Conditions:** None **Schools:** , , \* [Request Showing, Photos, History, Maps, Deed, Watch List, Tax Info](#)



Address	Price	Bd & Bth	Living / Avg.	Land   Avg.	Lanai	Occ.	FL	DOM
<a href="#">425 Ena Road 608B</a>	<b>\$78,000 LH</b>	1 & 1/0	588   \$133	0   \$inf	0	52%	6	2

Address	Tax   Maint.   Ass.	Assessed Land	Assessed Building	Assessed Total	Ratio	Year & Remodeled
<a href="#">425 Ena Road 608B</a>	\$0   \$673   \$0	\$97,900	\$235,600	\$333,500	23%	1958 & NA

[425 Ena Road 608B](#) - MLS#: [202416840](#) - Contractor special! this CORNER/end unit apartment is ready for your vision and special touch! enjoy RARE FEATURE of Diamond Head view from your lanai. Kalia is a secure gated community with well maintained lush garden grounds, heated saltwater pool & security patrol. Building B location is closest to Hilton Hawaiian Village and Waikiki Beaches. Long lease expires in 2048. Pets allowed (please verify). Maintenance fee includes utilities, cable and property tax. Tax records reflect 2024 tax year. MUST SEE! Visit our 1st Open House Saturday 7/27, 2-5pm  
**Region:** Metro **Neighborhood:** Waikiki **Condition:** Fair **Parking:** Open, Other, Street **Total Parking:** 0 **View:** City, Diamond Head, Garden, Sunrise **Frontage:** **Pool:** **Zoning:** X2 - Apartment Precinct **Sale Conditions:** None **Schools:** , , \*  
[Request Showing](#), [Photos](#), [History](#), [Maps](#), [Deed](#), [Watch List](#), [Tax Info](#)

DOM = Days on Market, Occ. = Occupancy, FL = Floor Number