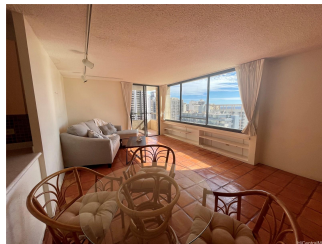


**Aloha Towers 430 Lewers Street Unit 2104, Honolulu 96815 \* Aloha Towers \* \$578,000 \***

**Originally \$609,000**

Beds: <b>1</b>	MLS#: <b>202323721, FS</b>	Year Built: <b>1976</b>
Bath: <b>1/0</b>	Status: <b>Active</b>	Remodeled:
Living Sq. Ft.: <b>732</b>	List Date & DOM: <b>10-11-2023 &amp; 279</b>	Total Parking: <b>1</b>
Land Sq. Ft.: <b>45,259</b>	Condition: <b>Average</b>	<a href="#">Assessed Value</a>
Lanai Sq. Ft.: <b>100</b>	Frontage:	Building: <b>\$500,000</b>
Sq. Ft. Other: <b>0</b>	Tax/Year: <b>\$165/2023</b>	Land: <b>\$67,000</b>
Total Sq. Ft. <b>832</b>	Neighborhood: <b>Waikiki</b>	Total: <b>\$567,000</b>
Maint./Assoc. <b>\$1,035 / \$0</b>	<a href="#">Flood Zone</a> : <b>Zone AO - Tool</b>	Stories / CPR: <b>One / No</b>
Parking: <b>Assigned, Covered - 1</b>	Frontage:	
<a href="#">Zoning</a> : <b>X2 - Apartment Precinct</b>	View: <b>Diamond Head, Ocean</b>	

**Public Remarks:** Popular "D" stack!! Spacious 1 bedroom, 1 bath plus 2 open lanais in the heart of world famous waikiki. Beautiful ocean, mountains and Waikiki city views from living room, bedroom and two lanais. Assigned/covered parking stall and ample guest parking stalls. 24 hours security guard and friendly staff. Maintenance fee includes al utilities, such as water, hot water, central AC, electricity, gas, cable TV and internet. Sold AS-IS. Very easy to show with short notice! **Sale**  
**Conditions:** None **Schools:** , , \* [Request Showing](#), [Photos](#), [History](#), [Maps](#), [Deed](#), [Watch List](#), [Tax Info](#)



Address	Price	Bd & Bth	Living / Avg.	Land   Avg.	Lanai	Occ.	FL	DOM
<a href="#">430 Lewers Street 2104</a>	<b>\$578,000</b>	1 & 1/0	732   \$790	45,259   \$13	100	0%	21	279

Address	Tax   Maint.   Ass.	Assessed Land	Assessed Building	Assessed Total	Ratio	Year & Remodeled
<a href="#">430 Lewers Street 2104</a>	\$165   \$1,035   \$0	\$67,000	\$500,000	\$567,000	102%	1976 & NA

[430 Lewers Street 2104](#) - MLS#: [202323721](#) - Original price was \$609,000 - Popular "D" stack!! Spacious 1 bedroom, 1 bath plus 2 open lanais in the heart of world famous waikiki. Beautiful ocean, mountains and Waikiki city views from living room, bedroom and two lanais. Assigned/covered parking stall and ample guest parking stalls. 24 hours security guard and friendly staff. Maintenance fee includes al utilities, such as water, hot water, central AC, electricity, gas, cable TV and internet. Sold AS-IS. Very easy to show with short notice! **Region:** Metro **Neighborhood:** Waikiki **Condition:** Average **Parking:** Assigned, Covered - 1 **Total Parking:** 1 **View:** Diamond Head, Ocean **Frontage:** **Pool:** **Zoning:** X2 - Apartment Precinct **Sale**  
**Conditions:** None **Schools:** , , \* [Request Showing](#), [Photos](#), [History](#), [Maps](#), [Deed](#), [Watch List](#), [Tax Info](#)

DOM = Days on Market, Occ. = Occupancy, FL = Floor Number