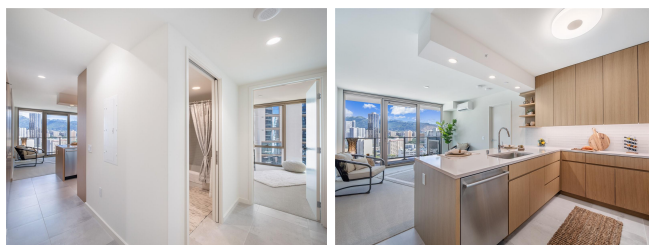


Sky Ala Moana West 1388 Kapiolani Boulevard Unit 1709, Honolulu 96814 * \$1,088,000

Beds: 2	MLS#: 202325052, FS	Year Built: 2023
Bath: 2/0	Status: Active	Remodeled:
Living Sq. Ft.: 848	List Date & DOM: 11-06-2023 & 237	Total Parking: 2
Land Sq. Ft.: 0	Condition: Excellent	Assessed Value
Lanai Sq. Ft.: 84	Frontage:	Building: \$288,500
Sq. Ft. Other: 0	Tax/Year: \$102/2023	Land: \$58,200
Total Sq. Ft. 932	Neighborhood: Holiday Mart	Total: \$346,700
Maint./Assoc. \$1,113 / \$0	Flood Zone : Zone X - Tool	Stories / CPR: 21+ / No
Parking: Assigned, Covered - 2, Guest, Secured Entry	Frontage:	
Zoning : 33 - BMX-3 Community Business M	View: City, Mountain, Ocean	

Public Remarks: In Ala Moana’s newest luxury condo, there is a place that soars eloquently in the sky. A place with bright floor to ceiling windows boasting views of the twinkling city, majestic mountains, and vast blue ocean. Experience truly comfortable living with modern high-end finishes, and upgraded features like sophisticated Bosch appliances, a state-of-the-art EV Charger in your parking, and Mitsubishi Air Conditioning that welcomes you with a crisp, refreshing atmosphere each day. Enjoy hosting the finest get-togethers on the 8th floor amenity deck offering commodious gathering rooms, a cutting-edge gym, a large pool, Jacuzzi, lap pool, extensive BBQ areas, a dog park, and entertainment spaces for all ages. Journey through the dreams of every homeowner in Ala Moana’s newest luxury condo soaring eloquently in the sky, awaiting your arrival home. **Sale Conditions:** None **Schools:** , , * [Request Showing](#), [Photos](#), [History](#), [Maps](#), [Deed](#), [Watch List](#), [Tax Info](#)



Address	Price	Bd & Bth	Living / Avg.	Land Avg.	DOM
1388 Kapiolani Boulevard 1709	\$1,088,000	2 & 2/0	848 \$1,283	0 \$inf	237

Address	Tax Maint. Ass.	Assessed Land	Assessed Building	Assessed Total	Ratio	Year & Remodeled
1388 Kapiolani Boulevard 1709	\$102 \$1,113 \$0	\$58,200	\$288,500	\$346,700	314%	2023 & NA

[1388 Kapiolani Boulevard 1709](#) - MLS#: [202325052](#) - In Ala Moana’s newest luxury condo, there is a place that soars eloquently in the sky. A place with bright floor to ceiling windows boasting views of the twinkling city, majestic mountains, and vast blue ocean. Experience truly comfortable living with modern high-end finishes, and upgraded features like sophisticated Bosch appliances, a state-of-the-art EV Charger in your parking, and Mitsubishi Air Conditioning that welcomes you with a crisp, refreshing atmosphere each day. Enjoy hosting the finest get-togethers on the 8th floor amenity deck offering commodious gathering rooms, a cutting-edge gym, a large pool, Jacuzzi, lap pool, extensive BBQ areas, a dog park, and entertainment spaces for all ages. Journey through the dreams of every homeowner in Ala Moana’s newest luxury condo soaring eloquently in the sky, awaiting your arrival home. **Region:** Metro **Neighborhood:** Holiday Mart **Condition:** Excellent **Parking:** Assigned, Covered - 2, Guest, Secured Entry **Total Parking:** 2 **View:** City, Mountain, Ocean **Frontage:** **Pool:** **Zoning:** 33 - BMX-3 Community Business M **Sale Conditions:** None **Schools:** , , * [Request Showing](#), [Photos](#), [History](#), [Maps](#), [Deed](#), [Watch List](#), [Tax Info](#)

DOM = Days on Market