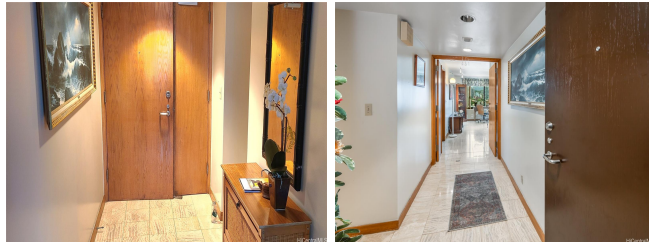


Nauru Tower 1330 Ala Moana Boulevard Unit 1008, Honolulu 96814 * Nauru Tower *

\$1,080,000

Bed: 2	MLS#: 202400029, FS	Year Built: 1990
Bath: 2/0	Status: Active	Remodeled:
Living Sq. Ft.: 1,385	List Date & DOM: 01-01-2024 & 197	Total Parking: 1
Land Sq. Ft.: 135,472	Condition: Excellent	Assessed Value
Lanai Sq. Ft.: 150	Frontage:	Building: \$873,800
Sq. Ft. Other: 0	Tax/Year: \$216/2023	Land: \$108,000
Total Sq. Ft. 1,535	Neighborhood: Kakaako	Total: \$981,800
Maint./Assoc. \$2,021 / \$0	Flood Zone : Zone AE - Tool	Stories / CPR: One / No
Parking: Assigned, Covered - 1, Guest, Secured Entry	Frontage:	
Zoning : Kak - Kakaako Community Development Project	View: City, Ocean	

Public Remarks: Largest 2 bedroom, 2 bathroom floor plan in building, 1385 SF plus 150 SF lanai, on cool East side to keep your energy bill low. Most desirable "Flex-Plan" layout. keep entire unit yourself, or use the separate front 1 bedroom, 1 bathroom for home office, or rent it as potential income, endless options. Nauru Tower is the luxury high rise in Kakaako, right across Ala Moana Beach and Mall. #1008 has a covered parking space, storage room, new paint, new W/D and Dishwasher, luxury kitchen with Sub-zero and granite. Resort style amenities, heated salt water pool, tennis, cabanas, BBQ, jogging paths, recreation deck, guest parking, e-charging, surf/bike racks, pickleball, 24 hour security. Unit can be delivered furnished or empty. Bring your toothbrush! **Sale Conditions:** None **Schools:** [Kaahumanu](#), [Stevenson](#), [Mckinley](#) * [Request Showing](#), [Photos](#), [History](#), [Maps](#), [Deed](#), [Watch List](#), [Tax Info](#)



Address	Price	Bd & Bth	Living / Avg.	Land Avg.	Lanai	Occ.	FL	DOM
1330 Ala Moana Boulevard 1008	\$1,080,000	2 & 2/0	1,385 \$780	135,472 \$8	150	65%	10	197

Address	Tax Maint. Ass.	Assessed Land	Assessed Building	Assessed Total	Ratio	Year & Remodeled
1330 Ala Moana Boulevard 1008	\$216 \$2,021 \$0	\$108,000	\$873,800	\$981,800	110%	1990 & NA

[1330 Ala Moana Boulevard 1008](#) - MLS#: [202400029](#) - Largest 2 bedroom, 2 bathroom floor plan in building, 1385 SF plus 150 SF lanai, on cool East side to keep your energy bill low. Most desirable "Flex-Plan" layout. keep entire unit yourself, or use the separate front 1 bedroom, 1 bathroom for home office, or rent it as potential income, endless options. Nauru Tower is the luxury high rise in Kakaako, right across Ala Moana Beach and Mall. #1008 has a covered parking space, storage room, new paint, new W/D and Dishwasher, luxury kitchen with Sub-zero and granite. Resort style amenities, heated salt water pool, tennis, cabanas, BBQ, jogging paths, recreation deck, guest parking, e-charging, surf/bike racks, pickleball, 24 hour security. Unit can be delivered furnished or empty. Bring your toothbrush! **Region:** Metro **Neighborhood:** Kakaako **Condition:** Excellent **Parking:** Assigned, Covered - 1, Guest, Secured Entry **Total Parking:** 1 **View:** City, Ocean **Frontage:** **Pool:** **Zoning:** Kak - Kakaako Community Development Project **Sale Conditions:** None **Schools:** [Kaahumanu](#), [Stevenson](#), [Mckinley](#) * [Request Showing](#), [Photos](#), [History](#), [Maps](#), [Deed](#), [Watch List](#), [Tax Info](#)

DOM = Days on Market, Occ. = Occupancy, FL = Floor Number