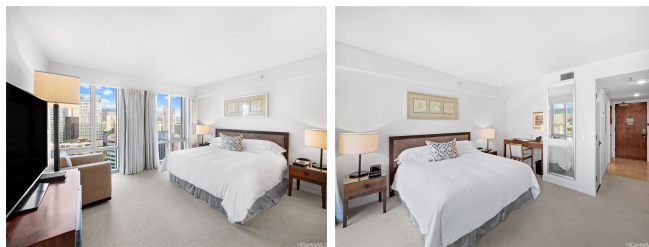


Trump Tower Waikiki 223 Saratoga Road Unit 2201, Honolulu 96815 * \$420,000

Beds: 0	MLS#: 202400537, FS	Year Built: 2009
Bath: 1/0	Status: Active	Remodeled:
Living Sq. Ft.: 418	List Date & DOM: 01-09-2024 & 190	Total Parking: 0
Land Sq. Ft.: 0	Condition: Excellent	Assessed Value
Lanai Sq. Ft.: 0	Frontage:	Building: \$159,900
Sq. Ft. Other: 0	Tax/Year: \$460/2023	Land: \$232,200
Total Sq. Ft. 418	Neighborhood: Waikiki	Total: \$392,100
Maint./Assoc. \$757 / \$0	Flood Zone : Zone AE - Tool	Stories / CPR: 21+ / No
Parking: Other	Frontage:	
Zoning : X6 - Resort Mixed Use Precinct	View: City, Mountain	

Public Remarks: Enjoy luxury living at Ka La'i Waikiki Beach, LXR Hotels & Resorts Hotel/Condo! (former Trump International Hotel Waikiki) This Studio unit comes fully furnished with all linens & Kitchenware and City and Mountain View! Top notch amenities include infinity pool, concierge, valet parking and a full service spa. Including in purchase are upscale appliances, granite counter tops and travertine tile flooring. Steps away from Waikiki's famous white sand beaches. **Sale Conditions:** None **Schools:** , , * [Request Showing](#), [Photos](#), [History](#), [Maps](#), [Deed](#), [Watch List](#), [Tax Info](#)



Address	Price	Bd & Bth	Living / Avg.	Land Avg.	DOM
223 Saratoga Road 2201	\$420,000	0 & 1/0	418 \$1,005	0 \$inf	190

Address	Tax Maint. Ass.	Assessed Land	Assessed Building	Assessed Total	Ratio	Year & Remodeled
223 Saratoga Road 2201	\$460 \$757 \$0	\$232,200	\$159,900	\$392,100	107%	2009 & NA

[223 Saratoga Road 2201](#) - MLS#: [202400537](#) - Enjoy luxury living at Ka La'i Waikiki Beach, LXR Hotels & Resorts Hotel/Condo! (former Trump International Hotel Waikiki) This Studio unit comes fully furnished with all linens & Kitchenware and City and Mountain View! Top notch amenities include infinity pool, concierge, valet parking and a full service spa. Including in purchase are upscale appliances, granite counter tops and travertine tile flooring. Steps away from Waikiki's famous white sand beaches. **Region:** Metro **Neighborhood:** Waikiki **Condition:** Excellent **Parking:** Other **Total Parking:** 0 **View:** City, Mountain **Frontage:** **Pool:** **Zoning:** X6 - Resort Mixed Use Precinct **Sale Conditions:** None **Schools:** , , * [Request Showing](#), [Photos](#), [History](#), [Maps](#), [Deed](#), [Watch List](#), [Tax Info](#)

DOM = Days on Market