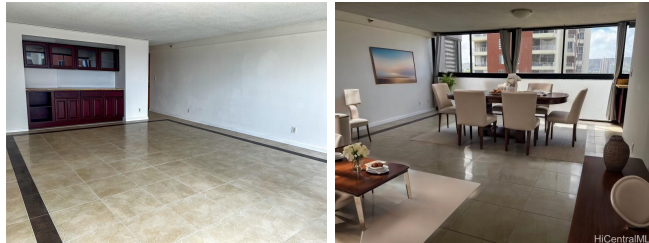


**Kings Gate 2724 Kahoaloha Lane Unit 1406, Honolulu 96826 \* \$585,000 \* Originally \$610,000**

Beds: <b>2</b>	MLS#: <b>202400944, FS</b>	Year Built: <b>1981</b>
Bath: <b>2/0</b>	Status: <b>Active</b>	Remodeled:
Living Sq. Ft.: <b>1,049</b>	List Date & DOM: <b>01-19-2024 &amp; 180</b>	Total Parking: <b>2</b>
Land Sq. Ft.: <b>32,844</b>	Condition: <b>Excellent, Above Average</b>	<a href="#">Assessed Value</a>
Lanai Sq. Ft.: <b>0</b>	Frontage:	Building: <b>\$528,700</b>
Sq. Ft. Other: <b>0</b>	Tax/Year: <b>\$140/2023</b>	Land: <b>\$50,100</b>
Total Sq. Ft. <b>1,049</b>	Neighborhood: <b>Moiliili</b>	Total: <b>\$578,800</b>
Maint./Assoc. <b>\$1,033 / \$0</b>	<a href="#">Flood Zone</a> : <b>Zone X - Tool</b>	Stories / CPR: <b>21+ / No</b>
Parking: <b>Assigned, Open - 2, Tandem</b>	Frontage:	
<a href="#">Zoning</a> : <b>12 - A-2 Medium Density Apartme</b>	View: <b>Cemetery, City, Diamond Head, Sunrise</b>	

**Public Remarks:** PRICE ADJUSTMENT. Here's your chance to view this beautiful unit. Welcome to this Diamond Head view of a spacious 2 bedroom 2 bath unit with 2 parking spaces (tandem). Washer and dryer in the unit for your hassle free laundry day. For your added safety and peace of mind, the unit is equipped with a fire sprinkler system as well as an on site resident manager for your convenience. It's LOCATION LOCATION LOCATION with this unit! Close to freeway on and off ramps, University of Hawaii in the near vicinity and a range of diverse restaurants close by to whet your appetite, Hurry and make arrangements to see this unit.(photos have been virtually staged and enhanced) **Sale Conditions:** None **Schools:** , , \* [Request Showing](#), [Photos](#), [History](#), [Maps](#), [Deed](#), [Watch List](#), [Tax Info](#)



Address	Price	Bd & Bth	Living / Avg.	Land   Avg.	DOM
<a href="#">2724 Kahoaloha Lane 1406</a>	<b>\$585,000</b>	2 & 2/0	1,049   \$558	32,844   \$18	180

Address	Tax   Maint.   Ass.	Assessed Land	Assessed Building	Assessed Total	Ratio	Year & Remodeled
<a href="#">2724 Kahoaloha Lane 1406</a>	\$140   \$1,033   \$0	\$50,100	\$528,700	\$578,800	101%	1981 & NA

[2724 Kahoaloha Lane 1406](#) - MLS#: [202400944](#) - Original price was \$610,000 - PRICE ADJUSTMENT. Here's your chance to view this beautiful unit. Welcome to this Diamond Head view of a spacious 2 bedroom 2 bath unit with 2 parking spaces (tandem). Washer and dryer in the unit for your hassle free laundry day. For your added safety and peace of mind, the unit is equipped with a fire sprinkler system as well as an on site resident manager for your convenience. It's LOCATION LOCATION LOCATION with this unit! Close to freeway on and off ramps, University of Hawaii in the near vicinity and a range of diverse restaurants close by to whet your appetite, Hurry and make arrangements to see this unit.(photos have been virtually staged and enhanced) **Region:** Metro **Neighborhood:** Moiliili **Condition:** Excellent, Above Average **Parking:** Assigned, Open - 2, Tandem **Total Parking:** 2 **View:** Cemetery, City, Diamond Head, Sunrise **Frontage:** **Pool:** **Zoning:** 12 - A-2 Medium Density Apartme **Sale Conditions:** None **Schools:** , , \* [Request Showing](#), [Photos](#), [History](#), [Maps](#), [Deed](#), [Watch List](#), [Tax Info](#)

DOM = Days on Market