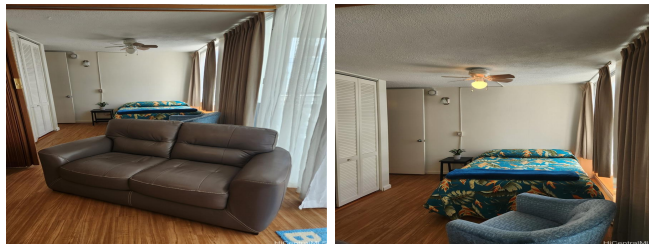


Waikiki Skyliner 2415 Ala Wai Boulevard Unit 1804, Honolulu 96815 * Waikiki Skyliner *

\$451,500 * Originally \$479,500

Beds: 2	MLS#: 202401331, FS	Year Built: 1968
Bath: 1/0	Status: Pending	Remodeled: 2019
Living Sq. Ft.: 845	List Date & DOM: 01-22-2024 & 119	Total Parking: 1
Land Sq. Ft.: 20,691	Condition: Average	Assessed Value
Lanai Sq. Ft.: 0	Frontage: Golf Course, Stream/Canal	Building: \$435,700
Sq. Ft. Other: 0	Tax/Year: \$139/2024	Land: \$65,700
Total Sq. Ft. 845	Neighborhood: Waikiki	Total: \$501,400
Maint./Assoc. \$1,083 / \$0	Flood Zone : Zone AE - Tool	Stories / CPR: 15-20 / No
Parking: Assigned, Covered - 1, Secured Entry, Street	Frontage: Golf Course, Stream/Canal	
Zoning : X2 - Apartment Precinct	View: Golf Course, Marina/Canal, Mountain, Ocean, Sunrise, Sunset	

Public Remarks: \$28,000 PRICE REDUCTION from the original price. Building has 100% Hurricane Insurance. This is the only True 2-bedroom, 1-bath FEE SIMPLE home for sale in Waikiki Skyliner, It is in the heart of Waikiki and is waiting for you to make it your own. Close to the University of Hawaii, the International Market Place, The Bus, and the New Target which will open soon. Enjoy cool breezes on your enclosed lanai with views of Waikiki Beach, the Ala Wai Golf Course, and rainbows against the Ko’olau Mountains. Most everything you’ll need is within easy walking distance. Convenient Parking Space close to lobby entrance. The parking garage has been updated with new security gates and cameras. A key fob is required to enter the gates, the building, and the elevators. Capital Improvement projects are ongoing to maintain the building. **Sale Conditions:** None **Schools:** [Jefferson](#), [Washington](#), [Kaimuki](#) * [Request Showing](#), [Photos](#), [History](#), [Maps](#), [Deed](#), [Watch List](#), [Tax Info](#)



Address	Price	Bd & Bth	Living / Avg.	Land Avg.	Lanai	Occ.	FL	DOM
2415 Ala Wai Boulevard 1804	\$451,500	2 & 1/0	845 \$534	20,691 \$22	0	60%	18	119

Address	Tax Maint. Ass.	Assessed Land	Assessed Building	Assessed Total	Ratio	Year & Remodeled
2415 Ala Wai Boulevard 1804	\$139 \$1,083 \$0	\$65,700	\$435,700	\$501,400	90%	1968 & 2019

[2415 Ala Wai Boulevard 1804](#) - MLS#: [202401331](#) - Original price was \$479,500 - \$28,000 PRICE REDUCTION from the original price. Building has 100% Hurricane Insurance. This is the only True 2-bedroom, 1-bath FEE SIMPLE home for sale in Waikiki Skyliner, It is in the heart of Waikiki and is waiting for you to make it your own. Close to the University of Hawaii, the International Market Place, The Bus, and the New Target which will open soon. Enjoy cool breezes on your enclosed lanai with views of Waikiki Beach, the Ala Wai Golf Course, and rainbows against the Ko’olau Mountains. Most everything you’ll need is within easy walking distance. Convenient Parking Space close to lobby entrance. The parking garage has been updated with new security gates and cameras. A key fob is required to enter the gates, the building, and the elevators. Capital Improvement projects are ongoing to maintain the building. **Region:** Metro **Neighborhood:** Waikiki **Condition:** Average **Parking:** Assigned, Covered - 1, Secured Entry, Street **Total Parking:** 1 **View:** Golf Course, Marina/Canal, Mountain, Ocean, Sunrise, Sunset **Frontage:** Golf Course, Stream/Canal **Pool:** **Zoning:** X2 - Apartment Precinct **Sale Conditions:** None **Schools:** [Jefferson](#), [Washington](#), [Kaimuki](#) * [Request Showing](#), [Photos](#), [History](#), [Maps](#), [Deed](#), [Watch List](#), [Tax Info](#)

DOM = Days on Market, Occ. = Occupancy, FL = Floor Number