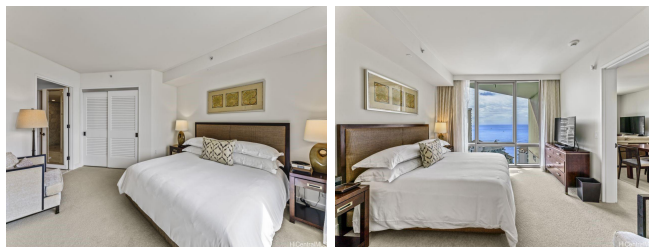


Trump Tower Waikiki 223 Saratoga Road Unit 2408, Honolulu 96815 * \$1,500,000

Beds: 1	MLS#: 202401801, FS	Year Built: 2009
Bath: 1/1	Status: Active	Remodeled:
Living Sq. Ft.: 1,027	List Date & DOM: 02-01-2024 & 147	Total Parking: 0
Land Sq. Ft.: 0	Condition: Excellent	Assessed Value
Lanai Sq. Ft.: 100	Frontage:	Building: \$796,100
Sq. Ft. Other: 0	Tax/Year: \$1,605/2024	Land: \$589,300
Total Sq. Ft. 1,127	Neighborhood: Waikiki	Total: \$1,385,400
Maint./Assoc. \$1,860 / \$0	Flood Zone : Zone AO - Tool	Stories / CPR: 21+ / No
Parking: Other	Frontage:	
Zoning : X6 - Resort Mixed Use Precinct	View: Ocean, Sunset	

Public Remarks: Enjoy luxury living at Ka La'i Waikiki Beach, LXR Hotels & Resorts Hotel/Condo! (former Trump International Hotel Waikiki) This 1 bedroom unit comes fully furnished with all linens & Kitchenware and Ocean View! Top notch amenities include infinity pool, concierge, valet parking and a full service spa. Including in purchase are upscale appliances, granite counter tops and travertine tile flooring. Steps away from Waikiki's famous white sand beaches. **Sale Conditions:** None
Schools: , , * [Request Showing](#), [Photos](#), [History](#), [Maps](#), [Deed](#), [Watch List](#), [Tax Info](#)



Address	Price	Bd & Bth	Living / Avg.	Land Avg.	DOM
223 Saratoga Road 2408	\$1,500,000	1 & 1/1	1,027 \$1,461	0 \$inf	147

Address	Tax Maint. Ass.	Assessed Land	Assessed Building	Assessed Total	Ratio	Year & Remodeled
223 Saratoga Road 2408	\$1,605 \$1,860 \$0	\$589,300	\$796,100	\$1,385,400	108%	2009 & NA

[223 Saratoga Road 2408](#) - MLS#: [202401801](#) - Enjoy luxury living at Ka La'i Waikiki Beach, LXR Hotels & Resorts Hotel/Condo! (former Trump International Hotel Waikiki) This 1 bedroom unit comes fully furnished with all linens & Kitchenware and Ocean View! Top notch amenities include infinity pool, concierge, valet parking and a full service spa. Including in purchase are upscale appliances, granite counter tops and travertine tile flooring. Steps away from Waikiki's famous white sand beaches. **Region:** Metro **Neighborhood:** Waikiki **Condition:** Excellent **Parking:** Other **Total Parking:** 0 **View:** Ocean, Sunset **Frontage:** **Pool:** **Zoning:** X6 - Resort Mixed Use Precinct **Sale Conditions:** None **Schools:** , , * [Request Showing](#), [Photos](#), [History](#), [Maps](#), [Deed](#), [Watch List](#), [Tax Info](#)

DOM = Days on Market