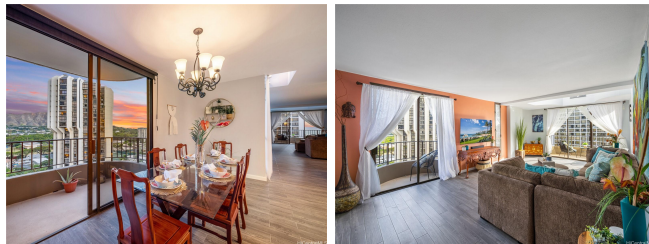


Leisure Heritage 311 Ohua Avenue Unit PH4, Honolulu 96815 * Leisure Heritage *

\$1,250,000

Beds: 3	MLS#: 202406374, FS	Year Built: 1974
Bath: 2/1	Status: Active	Remodeled:
Living Sq. Ft.: 1,886	List Date & DOM: 03-21-2024 & 118	Total Parking: 2
Land Sq. Ft.: 21,432	Condition: Excellent	Assessed Value
Lanai Sq. Ft.: 279	Frontage:	Building: \$814,500
Sq. Ft. Other: 0	Tax/Year: \$279/2023	Land: \$236,300
Total Sq. Ft. 2,165	Neighborhood: Waikiki	Total: \$1,050,800
Maint./Assoc. \$2,684 / \$0	Flood Zone: Zone AE - Tool	Stories / CPR: Two / No
Parking: Assigned, Covered - 2, Garage, Secured Entry, Tandem	Frontage:	
Zoning: X2 - Apartment Precinct	View: City, Mountain, Ocean, Sunset	

Public Remarks: Penthouse in Paradise at Leisure Heritage with Diamond Head & Ocean Views in the vibrant heart of Waikiki! Every Bedroom & Living / Entertainment Space comes with its OWN Lanai with Views making your Hawaiian Retreat impossible to beat! Spacious Split Level 3 Bed & 2 1/2 Bath, adorned with high-quality finishes & contemporary design. Luxurious Kitchen boasts an Open Floor Plan with custom cabinetry & sleek countertops for island dining. Exclusive Penthouse Owner Use of the expansive rooftop terrace to enjoy dining while watching the Sunset Colors of Waikiki & the City Night Lights Twinkle under the stars! Residents of Leisure Heritage also enjoy access to secure key fob entry, stunning pool & BBQ amenities overlooking the Ala Wai, guest parking & this unit has 2 Covered Stalls. You are moments away from world-class beaches, shopping, dining, & entertainment, providing an unmatched lifestyle of convenience & luxury near Honolulu, Ala Moana & the Airport! Secure your Statement of Elegance & Sophistication in one of the most coveted and convenient locations in Waikiki! **Sale Conditions:** None **Schools:** , , * [Request Showing](#), [Photos](#), [History](#), [Maps](#), [Deed](#), [Watch List](#), [Tax Info](#)



Address	Price	Bd & Bth	Living / Avg.	Land Avg.	Lanai	Occ.	FL	DOM
311 Ohua Avenue PH4	\$1,250,000	3 & 2/1	1,886 \$663	21,432 \$58	279	57%	14	118

Address	Tax Maint. Ass.	Assessed Land	Assessed Building	Assessed Total	Ratio	Year & Remodeled
311 Ohua Avenue PH4	\$279 \$2,684 \$0	\$236,300	\$814,500	\$1,050,800	119%	1974 & NA

[311 Ohua Avenue PH4](#) - MLS#: [202406374](#) - Penthouse in Paradise at Leisure Heritage with Diamond Head & Ocean Views in the vibrant heart of Waikiki! Every Bedroom & Living / Entertainment Space comes with its OWN Lanai with Views making your Hawaiian Retreat impossible to beat! Spacious Split Level 3 Bed & 2 1/2 Bath, adorned with high-quality finishes & contemporary design. Luxurious Kitchen boasts an Open Floor Plan with custom cabinetry & sleek countertops for island dining. Exclusive Penthouse Owner Use of the expansive rooftop terrace to enjoy dining while watching the Sunset Colors of Waikiki & the City Night Lights Twinkle under the stars! Residents of Leisure Heritage also enjoy access to secure key fob entry, stunning pool & BBQ amenities overlooking the Ala Wai, guest parking & this unit has 2 Covered Stalls. You are moments away from world-class beaches, shopping, dining, & entertainment, providing an unmatched lifestyle of convenience & luxury near Honolulu, Ala Moana & the Airport! Secure your Statement of Elegance & Sophistication in one of the most coveted and convenient locations in Waikiki! **Region:** Metro **Neighborhood:** Waikiki **Condition:** Excellent **Parking:** Assigned, Covered - 2, Garage, Secured Entry, Tandem **Total Parking:** 2 **View:** City, Mountain, Ocean, Sunset **Frontage:** **Pool:** **Zoning:** X2 - Apartment Precinct **Sale Conditions:** None **Schools:** , , * [Request Showing](#), [Photos](#), [History](#), [Maps](#), [Deed](#), [Watch List](#), [Tax Info](#)

DOM = Days on Market, Occ. = Occupancy, FL = Floor Number