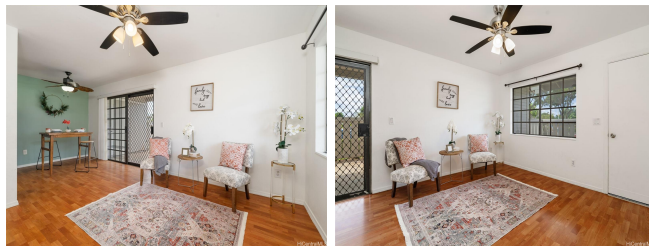


**Pae Ko Gardens 91-1020 Kaiu Avenue Unit 2A, Kapolei 96707 \* Pae Ko Gardens \***

**\$525,000**

Bed(s): <b>2</b>	MLS#: <b>202406453, FS</b>	Year Built: <b>1995</b>
Bath: <b>1/0</b>	Status: <b>Active</b>	Remodeled: <b>2017</b>
Living Sq. Ft.: <b>701</b>	List Date & DOM: <b>05-30-2024 &amp; 27</b>	Total Parking: <b>2</b>
Land Sq. Ft.: <b>0</b>	Condition: <b>Average</b>	<a href="#">Assessed Value</a>
Lanai Sq. Ft.: <b>245</b>	Frontage:	Building: <b>\$264,800</b>
Sq. Ft. Other: <b>0</b>	Tax/Year: <b>\$142/2024</b>	Land: <b>\$221,300</b>
Total Sq. Ft. <b>946</b>	Neighborhood: <b>Kapolei</b>	Total: <b>\$486,100</b>
Maint./Assoc. <b>\$438 / \$45</b>	<a href="#">Flood Zone</a> : <b>Zone D - Tool</b>	Stories / CPR: / <b>No</b>
Parking: <b>Assigned, Guest, Open - 2, Street</b>	Frontage:	
<a href="#">Zoning</a> : <b>11 - A-1 Low Density Apartment</b>	View: <b>Garden</b>	

**Public Remarks:** Welcome to this charming ground floor townhome in Pae Ko Gardens, part of the Villages of Kapolei. This beautifully updated two-bedroom, one-bath unit boasts a modern kitchen and bath, perfect for comfortable living. Enjoy seamless indoor-outdoor living with inviting outdoor spaces and direct access to a serene green space. The home is a short distance to local schools. The well-managed community offers access to fantastic amenities, including pool, rec center and function spaces, ensuring a vibrant lifestyle. You'll be part of the larger community of Kapolei, known as Oahu's "Second City," Residents enjoy easy access to Ka Makana Ali'i Mall, a variety of retail stores, including Costco, Target, Walmart and Ross, as well as a wide selection of restaurants and entertainment options. Everyday needs are met with numerous grocery stores nearby. The town also boasts abundant recreational opportunities, with parks, golf courses, and beaches just a short drive away, making Kapolei a fantastic place to live, work, and play. Don't miss the opportunity to make this lovely townhome and community your own! **Sale Conditions:** None **Schools:** , , \* [Request Showing](#), [Photos](#), [History](#), [Maps](#), [Deed](#), [Watch List](#), [Tax Info](#)



Address	Price	Bd & Bth	Living / Avg.	Land   Avg.	Lanai	Occ.	FL	DOM
<a href="#">91-1020 Kaiu Avenue 2A</a>	<b>\$525,000</b>	2 & 1/0	701   \$749	0   \$inf	245	64%	1	27

Address	Tax   Maint.   Ass.	Assessed Land	Assessed Building	Assessed Total	Ratio	Year & Remodeled
<a href="#">91-1020 Kaiu Avenue 2A</a>	\$142   \$438   \$45	\$221,300	\$264,800	\$486,100	108%	1995 & 2017

[91-1020 Kaiu Avenue 2A](#) - MLS#: [202406453](#) - Welcome to this charming ground floor townhome in Pae Ko Gardens, part of the Villages of Kapolei. This beautifully updated two-bedroom, one-bath unit boasts a modern kitchen and bath, perfect for comfortable living. Enjoy seamless indoor-outdoor living with inviting outdoor spaces and direct access to a serene green space. The home is a short distance to local schools. The well-managed community offers access to fantastic amenities, including pool, rec center and function spaces, ensuring a vibrant lifestyle. You'll be part of the larger community of Kapolei, known as Oahu's "Second City," Residents enjoy easy access to Ka Makana Ali'i Mall, a variety of retail stores, including Costco, Target, Walmart and Ross, as well as a wide selection of restaurants and entertainment options. Everyday needs are met with numerous grocery stores nearby. The town also boasts abundant recreational opportunities, with parks, golf courses, and beaches just a short drive away, making Kapolei a fantastic place to live, work, and play. Don't miss the opportunity to make this lovely townhome and community your own! **Region:** Ewa Plain **Neighborhood:** Kapolei **Condition:** Average **Parking:** Assigned, Guest, Open - 2, Street **Total Parking:** 2 **View:** Garden **Frontage:** **Pool:** **Zoning:** 11 - A-1 Low Density Apartment **Sale Conditions:** None **Schools:** , , \* [Request Showing](#), [Photos](#), [History](#), [Maps](#), [Deed](#), [Watch List](#), [Tax Info](#)

DOM = Days on Market, Occ. = Occupancy, FL = Floor Number