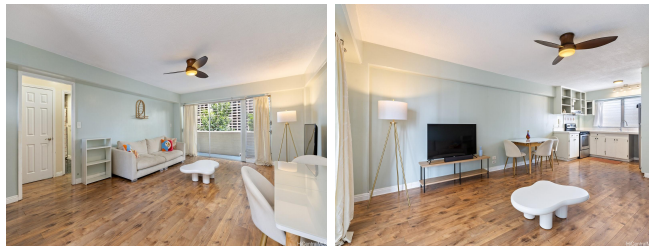


**Hale O Nai'a 320 Ainakea Way Unit 202, Honolulu 96815 \* Hale O Nai'a \* \$435,000**

Beds: <b>2</b>	MLS#: <b>202406674, FS</b>	Year Built: <b>1966</b>
Bath: <b>1/0</b>	Status: <b>Active</b>	Remodeled:
Living Sq. Ft.: <b>774</b>	List Date & DOM: <b>04-11-2024 &amp; 97</b>	Total Parking: <b>0</b>
Land Sq. Ft.: <b>6,316</b>	Condition: <b>Above Average</b>	<a href="#">Assessed Value</a>
Lanai Sq. Ft.: <b>115</b>	Frontage:	Building: <b>\$347,900</b>
Sq. Ft. Other: <b>0</b>	Tax/Year: <b>\$105/2023</b>	Land: <b>\$113,900</b>
Total Sq. Ft. <b>889</b>	Neighborhood: <b>Waikiki</b>	Total: <b>\$461,800</b>
Maint./Assoc. <b>\$405 / \$0</b>	<a href="#">Flood Zone</a> : <b>Zone X - Tool</b>	Stories / CPR: <b>One / No</b>
Parking: <b>None, Other, Street</b>	Frontage:	
<a href="#">Zoning</a> : <b>X2 - Apartment Precinct</b>	View: <b>None</b>	

**Public Remarks:** Welcome to your piece of paradise at 320 Ainakea Way #202! This airy 2-bedroom, 1-bathroom unit is located on the desirable Diamond Head side of Waikiki where you will find plenty of nearby amenities such as shops, restaurants, and famous Waikiki Beach. Step inside to discover an inviting open floor plan. The lanai provides a versatile space, perfect for morning coffee or for convenient surfboard storage. Additionally, the building's approval for 30-day rentals presents a fantastic opportunity for investors. VA Approved! **Sale Conditions:** None **Schools:** [Jefferson](#), [Washington](#), [Kaimuki](#) \* [Request Showing](#), [Photos](#), [History](#), [Maps](#), [Deed](#), [Watch List](#), [Tax Info](#)



Address	Price	Bd & Bth	Living / Avg.	Land   Avg.	Lanai	Occ.	FL	DOM
<a href="#">320 Ainakea Way 202</a>	<a href="#">\$435,000</a>	2 & 1/0	774   \$562	6,316   \$69	115	63%	2	97

Address	Tax   Maint.   Ass.	Assessed Land	Assessed Building	Assessed Total	Ratio	Year & Remodeled
<a href="#">320 Ainakea Way 202</a>	\$105   \$405   \$0	\$113,900	\$347,900	\$461,800	94%	1966 & NA

[320 Ainakea Way 202](#) - MLS#: [202406674](#) - Welcome to your piece of paradise at 320 Ainakea Way #202! This airy 2-bedroom, 1-bathroom unit is located on the desirable Diamond Head side of Waikiki where you will find plenty of nearby amenities such as shops, restaurants, and famous Waikiki Beach. Step inside to discover an inviting open floor plan. The lanai provides a versatile space, perfect for morning coffee or for convenient surfboard storage. Additionally, the building's approval for 30-day rentals presents a fantastic opportunity for investors. VA Approved! **Region:** Metro **Neighborhood:** Waikiki **Condition:** Above Average **Parking:** None, Other, Street **Total Parking:** 0 **View:** None **Frontage:** **Pool:** **Zoning:** X2 - Apartment Precinct **Sale Conditions:** None **Schools:** [Jefferson](#), [Washington](#), [Kaimuki](#) \* [Request Showing](#), [Photos](#), [History](#), [Maps](#), [Deed](#), [Watch List](#), [Tax Info](#)

DOM = Days on Market, Occ. = Occupancy, FL = Floor Number