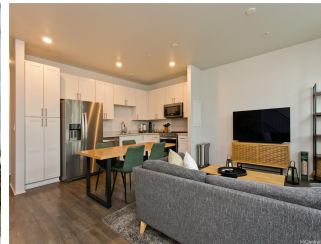


Kohina at Hoopili 91-3525 Kauluakoko Street Unit 2501, Ewa Beach 96706 * Kohina at

Hoopili * \$730,000

Beds: 2	MLS#: 202407265, FS	Year Built: 2021
Bath: 2/1	Status: Active Under Contract	Remodeled:
Living Sq. Ft.: 1,081	List Date & DOM: 03-30-2024 & 47	Total Parking: 2
Land Sq. Ft.: 0	Condition: Excellent	Assessed Value
Lanai Sq. Ft.: 70	Frontage: Other	Building: \$487,900
Sq. Ft. Other: 0	Tax/Year: \$146/2023	Land: \$174,400
Total Sq. Ft. 1,151	Neighborhood: Hoopili-kohina	Total: \$662,300
Maint./Assoc. \$311 / \$78	Flood Zone : Zone D - Tool	Stories / CPR: Two / No
Parking: Assigned, Covered - 1, Garage, Guest, Street	Frontage: Other	
Zoning : 17 - AMX-2 Medium Density Apt M	View: Other	

Public Remarks: OPEN HOUSE 5/18/24 1-4 PM has been cancelled. Welcome to your new home! This stunning 2-bedroom, 2.5-bathroom townhome in Kohina at Hoopili offers contemporary living in a fantastic neighborhood. Enjoy the convenience of upcoming amenities such as stores, eateries, and salons, all conveniently located just around the corner. With the Kamakana Ali'i and Rail just a short drive away, everything you need is within easy reach. Step inside to discover a spacious, flowing layout designed for comfortable living. Parking is a breeze with two spaces, including a 1-car garage. Plus, residents have access to the community pavilion and recreation center with a pool for added enjoyment. Nearby parks provide ample opportunities for family fun, dog walks, and scenic bike rides. This turnkey home is in pristine condition and ready for you to move in. Don't miss out on this fantastic opportunity to make it your own! Seller has a VA loan at 4.25% that may be assumable. **Sale Conditions:** None **Schools:** , , * [Request Showing](#), [Photos](#), [History](#), [Maps](#), [Deed](#), [Watch List](#), [Tax Info](#)



Address	Price	Bd & Bth	Living / Avg.	Land Avg.	Lanai	Occ.	FL	DOM
91-3525 Kauluakoko Street 2501	\$730,000	2 & 2/1	1,081 \$675	0 \$inf	70	76%	2	47

Address	Tax Maint. Ass.	Assessed Land	Assessed Building	Assessed Total	Ratio	Year & Remodeled
91-3525 Kauluakoko Street 2501	\$146 \$311 \$78	\$174,400	\$487,900	\$662,300	110%	2021 & NA

[91-3525 Kauluakoko Street 2501](#) - MLS#: [202407265](#) - OPEN HOUSE 5/18/24 1-4 PM has been cancelled. Welcome to your new home! This stunning 2-bedroom, 2.5-bathroom townhome in Kohina at Hoopili offers contemporary living in a fantastic neighborhood. Enjoy the convenience of upcoming amenities such as stores, eateries, and salons, all conveniently located just around the corner. With the Kamakana Ali'i and Rail just a short drive away, everything you need is within easy reach. Step inside to discover a spacious, flowing layout designed for comfortable living. Parking is a breeze with two spaces, including a 1-car garage. Plus, residents have access to the community pavilion and recreation center with a pool for added enjoyment. Nearby parks provide ample opportunities for family fun, dog walks, and scenic bike rides. This turnkey home is in pristine condition and ready for you to move in. Don't miss out on this fantastic opportunity to make it your own! Seller has a VA loan at 4.25% that may be assumable. **Region:** Ewa Plain **Neighborhood:** Hoopili-kohina **Condition:** Excellent **Parking:** Assigned, Covered - 1, Garage, Guest, Street **Total Parking:** 2 **View:** Other **Frontage:** Other **Pool:** **Zoning:** 17 - AMX-2 Medium Density Apt M **Sale Conditions:** None **Schools:** , , * [Request Showing](#), [Photos](#), [History](#), [Maps](#), [Deed](#), [Watch List](#), [Tax Info](#)

DOM = Days on Market, Occ. = Occupancy, FL = Floor Number