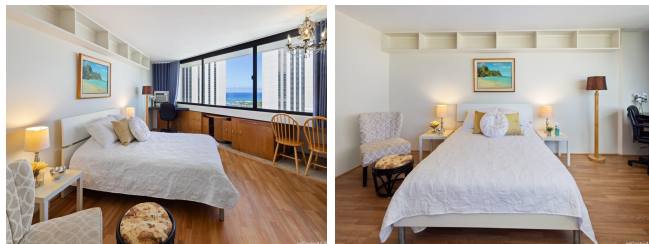


**Waikiki Marina Condominium 1700 Ala Moana Boulevard Unit 2202, Honolulu 96815 \***

**\$335,000**

|   |  |                                |
|---|--|--------------------------------|
| Beds: <b>0</b>  | MLS#: <b>202407769, FS</b>                         | Year Built: <b>1984</b>        |
| Bath: <b>1/0</b>  | Status: <b>Active</b>                              | Remodeled:                     |
| Living Sq. Ft.: <b>386</b>                              | List Date & DOM: <b>05-10-2024 &amp; 48</b>        | Total Parking: <b>1</b>        |
| Land Sq. Ft.: <b>38,768</b>                             | Condition: <b>Excellent</b>                        | <a href="#">Assessed Value</a> |
| Lanai Sq. Ft.: <b>0</b>                                 | Frontage: <b>Other</b>                             | Building: <b>\$188,400</b>     |
| Sq. Ft. Other: <b>0</b>                                 | Tax/Year: <b>\$94/2024</b>                         | Land: <b>\$86,600</b>          |
| Total Sq. Ft. <b>386</b>                                | Neighborhood: <b>Waikiki</b>                       | Total: <b>\$275,000</b>        |
| Maint./Assoc. <b>\$1,000 / \$0</b>                      | <a href="#">Flood Zone</a> : <b>Zone AE - Tool</b> | Stories / CPR: <b>21+ / No</b> |
| Parking: <b>Assigned, Covered - 1</b>                   | Frontage: <b>Other</b>                             |                                |
| <a href="#">Zoning</a> : <b>X2 - Apartment Precinct</b> | View: <b>City, Marina/Canal, Ocean, Sunset</b>     |                                |

**Public Remarks:** This high-floor Waikiki studio features stunning "million dollar" ocean views complimented by a peaceful ambiance throughout an open floor plan. Expansive picture windows welcome in refreshing trade winds and bright sunlight. Custom-cabinetry and storage allow you to optimize organization and enjoy living a clutter-free lifestyle with a modern and contemporary vibe. The entire studio is immaculate and is in excellent condition. The floors, kitchen and bathroom have a newly renovated feel, exuding an understated modern elegance. Your Waikiki Marina Condo lifestyle invites you to relax by the pool, unwind at the jacuzzi, enjoy outdoor dining at the barbeque, and stay active with a game of tennis (courts are scheduled for renovation and will possibly be lined for tennis and pickle ball). This unit is fee simple and includes a standard-size assigned parking stall in a secure and covered parking garage. If you're seeking a premier location, this condo's location is outstanding: You're in walking distance to Waikiki Beach, Duke Kahanamoku Lagoon, Waikiki's Friday night fireworks, the Waikiki Marina, Ala Moana Beach Park and the 355+ shops and restaurants at Ala Moana Center. **Sale Conditions:** None **Schools:** , , \* [Request Showing](#), [Photos](#), [History](#), [Maps](#), [Deed](#), [Watch List](#), [Tax Info](#)



| Address                                       | Price                     | Bd & Bth | Living / Avg. | Land   Avg.  | DOM |
|---|---------------------------|----------|---------------|--------------|-----|
| <a href="#">1700 Ala Moana Boulevard 2202</a> | <a href="#">\$335,000</a> | 0 & 1/0  | 386   \$868   | 38,768   \$9 | 48  |

| Address                                       | Tax   Maint.   Ass.  | Assessed Land | Assessed Building | Assessed Total | Ratio | Year & Remodeled |
|---|----------------------|---------------|-------------------|----------------|-------|------------------|
| <a href="#">1700 Ala Moana Boulevard 2202</a> | \$94   \$1,000   \$0 | \$86,600      | \$188,400         | \$275,000      | 122%  | 1984 & NA        |

[1700 Ala Moana Boulevard 2202](#) - MLS#: [202407769](#) - This high-floor Waikiki studio features stunning "million dollar" ocean views complimented by a peaceful ambiance throughout an open floor plan. Expansive picture windows welcome in refreshing trade winds and bright sunlight. Custom-cabinetry and storage allow you to optimize organization and enjoy living a clutter-free lifestyle with a modern and contemporary vibe. The entire studio is immaculate and is in excellent condition. The floors, kitchen and bathroom have a newly renovated feel, exuding an understated modern elegance. Your Waikiki Marina Condo lifestyle invites you to relax by the pool, unwind at the jacuzzi, enjoy outdoor dining at the barbeque, and stay active with a game of tennis (courts are scheduled for renovation and will possibly be lined for tennis and pickle ball). This unit is fee simple and includes a standard-size assigned parking stall in a secure and covered parking garage. If you're seeking a premier location, this condo's location is outstanding: You're in walking distance to Waikiki Beach, Duke Kahanamoku Lagoon, Waikiki's Friday night fireworks, the Waikiki Marina, Ala Moana Beach Park and the 355+ shops and restaurants at Ala Moana Center. **Region:** Metro **Neighborhood:** Waikiki **Condition:** Excellent **Parking:** Assigned, Covered - 1 **Total Parking:** 1 **View:** City, Marina/Canal, Ocean, Sunset **Frontage:** Other **Pool:** **Zoning:** X2 - Apartment Precinct **Sale Conditions:** None **Schools:** , , \* [Request Showing](#), [Photos](#), [History](#), [Maps](#), [Deed](#), [Watch List](#), [Tax Info](#)

DOM = Days on Market