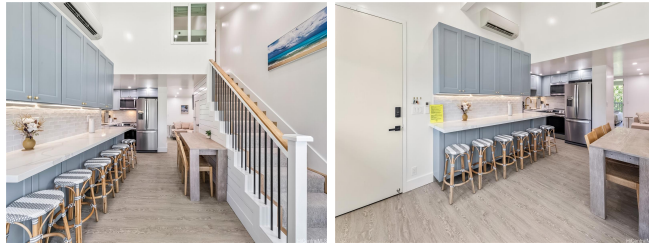


Kuilima Ests East 57-091 Lalo Kuilima Place Unit 60, Kahuku 96731 * \$1,750,000

Bed: 2	MLS#: 202407797, FS	Year Built: 1975
Bath: 2/0	Status: Active	Remodeled: 2024
Living Sq. Ft.: 897	List Date & DOM: 04-12-2024 & 96	Total Parking: 1
Land Sq. Ft.: 0	Condition: Excellent	Assessed Value
Lanai Sq. Ft.: 60	Frontage: Other	Building: \$618,800
Sq. Ft. Other: 0	Tax/Year: \$220/2023	Land: \$193,400
Total Sq. Ft. 957	Neighborhood: Kuilima	Total: \$812,200
Maint./Assoc. \$0 / \$642	Flood Zone : Zone AE - Tool	Stories / CPR: Two / No
Parking: Assigned, Guest, Open - 1	Frontage: Other	
Zoning : 11 - A-1 Low Density Apartment	View: Garden	

Public Remarks: Welcome to your fully renovated and one-of-a-kind treasures at the Turtle Bay Resort on Oahu's North Shore! This newly completed interior has been renovated and reconstructed into a 2 bedroom, 2 bathroom luxury unit that's ready to go, INCLUDING ALL FURNISHINGS. There is no other unit in the entire complex with this custom layout which allows for many guests to enjoy. New plumbing, electrical, stainless-steel appliances, new furniture, and custom finishes throughout this gem (List of Improvements in Supplements). Kuilima Estates East is one of the only communities on the North Shore that allows for short-term nightly vacation rentals. Well-manicured, spacious grounds with amenities including several pools, tennis/pickleball courts, bbq, & just a short walk to white sandy beaches! If you want to explore resort amenities, you are close to the newly remodeled Turtle Bay Resort, the world class Arnold Palmer championship golf course, cuisine by award winning chef Roy Yamaguchi, horse stables, scenic paths & more! North Shore surf spots, fishing, and all water sports are close by. Square footage is approximate, and bedrooms do not match tax records. Buyer to do their own due diligence. **Sale Conditions:** None **Schools:** [Kahuku](#), [Kahuku](#), [Kahuku](#) * [Request Showing](#), [Photos](#), [History](#), [Maps](#), [Deed](#), [Watch List](#), [Tax Info](#)



Address	Price	Bd & Bth	Living / Avg.	Land Avg.	DOM
57-091 Lalo Kuilima Place 60	\$1,750,000	2 & 2/0	897 \$1,951	0 \$inf	96

Address	Tax Maint. Ass.	Assessed Land	Assessed Building	Assessed Total	Ratio	Year & Remodeled
57-091 Lalo Kuilima Place 60	\$220 \$0 \$642	\$193,400	\$618,800	\$812,200	215%	1975 & 2024

[57-091 Lalo Kuilima Place 60](#) - MLS#: [202407797](#) - Welcome to your fully renovated and one-of-a-kind treasures at the Turtle Bay Resort on Oahu's North Shore! This newly completed interior has been renovated and reconstructed into a 2 bedroom, 2 bathroom luxury unit that's ready to go, INCLUDING ALL FURNISHINGS. There is no other unit in the entire complex with this custom layout which allows for many guests to enjoy. New plumbing, electrical, stainless-steel appliances, new furniture, and custom finishes throughout this gem (List of Improvements in Supplements). Kuilima Estates East is one of the only communities on the North Shore that allows for short-term nightly vacation rentals. Well-manicured, spacious grounds with amenities including several pools, tennis/pickleball courts, bbq, & just a short walk to white sandy beaches! If you want to explore resort amenities, you are close to the newly remodeled Turtle Bay Resort, the world class Arnold Palmer championship golf course, cuisine by award winning chef Roy Yamaguchi, horse stables, scenic paths & more! North Shore surf spots, fishing, and all water sports are close by. Square footage is approximate, and bedrooms do not match tax records. Buyer to do their own due diligence. **Region:** North Shore **Neighborhood:** Kuilima **Condition:** Excellent **Parking:** Assigned, Guest, Open - 1 **Total Parking:** 1 **View:** Garden **Frontage:** Other **Pool:** **Zoning:** 11 - A-1 Low Density Apartment **Sale Conditions:** None **Schools:** [Kahuku](#), [Kahuku](#), [Kahuku](#) * [Request Showing](#), [Photos](#), [History](#), [Maps](#), [Deed](#), [Watch List](#), [Tax Info](#)

DOM = Days on Market