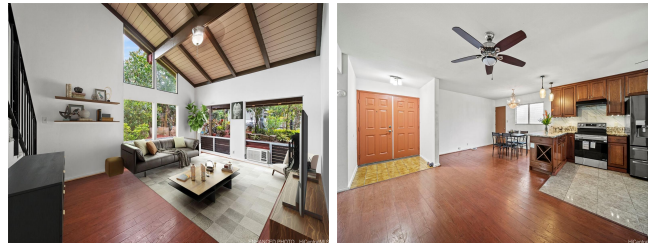


47-509 Hui Iwa Street, Kaneohe 96744 * * \$1,395,000 * Originally \$1,499,999

Beds: 4	MLS#: 202407877, FS	Year Built: 1978
Bath: 3/0	Status: Active	Remodeled: 2012
Living Sq. Ft.: 2,000	List Date & DOM: 04-25-2024 & 83	Total Parking: 3
Land Sq. Ft.: 6,317	Condition: Fair	Assessed Value
Lanai Sq. Ft.: 0	Frontage:	Building: \$519,700
Sq. Ft. Other: 0	Tax/Year: \$360/2023	Land: \$769,800
Total Sq. Ft. 2,000	Neighborhood: Club View Estate	Total: \$1,289,500
Maint./Assoc. \$0 / \$0	Flood Zone : Zone D - Tool	Stories / CPR: Two / No
Parking: 3 Car+	Frontage:	
Zoning : 05 - R-5 Residential District	View: Mountain	

Public Remarks: OPEN SUN 7/21: 1pm - 4pm. LOCATION AND PRICE! With the beautiful backdrop of the Koolau mountains, this home is in one of the best neighborhoods, tranquil and serene, and price is now reduced to \$1,395,000. This 2,000 square foot 4 bedroom, 3 bath home, with 1 bedroom and bath on the main floor, has large picture windows and vaulted ceilings. The 16 Solar (PV) panels (owned) are transferable along with a HECO net-metering agreement, which keep electric bills to a minimum. No HOA fees! No Maintenance fees! Here's your chance to get a house in the best location at the best price, so that you can create your own style of Island living. BRAND NEW oven and dishwasher are included. There is even a recreation room for you to transform into your own space for play, work, hobbies. The Koolau Shopping Center, a City bus stop across Hui Iwa Street, recreational parks, are just a stone's throw away yet never upset the tranquility of this special place. Must see to believe. **Sale Conditions:** None **Schools:** [Ahuimanu](#), [King](#), [Castle](#) * [Request Showing](#), [Photos](#), [History](#), [Maps](#), [Deed](#), [Watch List](#), [Tax Info](#)



Address	Price	Bd & Bth	Living / Avg.	Land Avg.	Lanai	Occ.	FL	DOM
47-509 Hui Iwa Street	\$1,395,000	4 & 3/0	2,000 \$698	6,317 \$221	0	0%	0	83

Address	Tax Maint. Ass.	Assessed Land	Assessed Building	Assessed Total	Ratio	Year & Remodeled
47-509 Hui Iwa Street	\$360 \$0 \$0	\$769,800	\$519,700	\$1,289,500	108%	1978 & 2012

[47-509 Hui Iwa Street](#) - MLS#: [202407877](#) - Original price was \$1,499,999 - OPEN SUN 7/21: 1pm - 4pm. LOCATION AND PRICE! With the beautiful backdrop of the Koolau mountains, this home is in one of the best neighborhoods, tranquil and serene, and price is now reduced to \$1,395,000. This 2,000 square foot 4 bedroom, 3 bath home, with 1 bedroom and bath on the main floor, has large picture windows and vaulted ceilings. The 16 Solar (PV) panels (owned) are transferable along with a HECO net-metering agreement, which keep electric bills to a minimum. No HOA fees! No Maintenance fees! Here's your chance to get a house in the best location at the best price, so that you can create your own style of Island living. BRAND NEW oven and dishwasher are included. There is even a recreation room for you to transform into your own space for play, work, hobbies. The Koolau Shopping Center, a City bus stop across Hui Iwa Street, recreational parks, are just a stone's throw away yet never upset the tranquility of this special place. Must see to believe. **Region:** Kaneohe **Neighborhood:** Club View Estate **Condition:** Fair **Parking:** 3 Car+ **Total Parking:** 3 **View:** Mountain **Frontage:** **Pool:** None **Zoning:** 05 - R-5 Residential District **Sale Conditions:** None **Schools:** [Ahuimanu](#), [King](#), [Castle](#) * [Request Showing](#), [Photos](#), [History](#), [Maps](#), [Deed](#), [Watch List](#), [Tax Info](#)

DOM = Days on Market, Occ. = Occupancy, FL = Floor Number