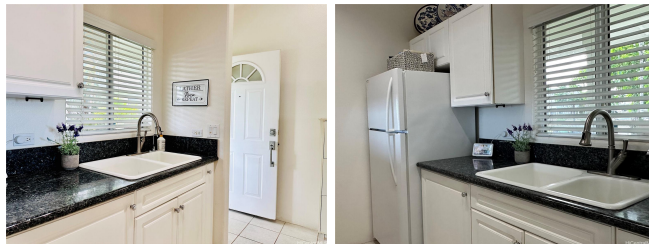


Viewpointe at Waikele 94-510 Lumiaina Street Unit N201, Waipahu 96797 * Viewpointe at

Waikele * \$580,000

Beds: 2	MLS#: 202408026, FS	Year Built: 1999
Bath: 2/0	Status: Active	Remodeled:
Living Sq. Ft.: 716	List Date & DOM: 05-15-2024 & 63	Total Parking: 2
Land Sq. Ft.: 1,019,173	Condition: Above Average	Assessed Value
Lanai Sq. Ft.: 110	Frontage:	Building: \$259,300
Sq. Ft. Other: 0	Tax/Year: \$80/2023	Land: \$256,300
Total Sq. Ft. 826	Neighborhood: Waikele	Total: \$515,600
Maint./Assoc. \$572 / \$0	Flood Zone : Zone D - Tool	Stories / CPR: One / No
Parking: Assigned, Guest, Open - 2	Frontage:	
Zoning : 05 - R-5 Residential District	View: Coastline, Diamond Head, Mountain	

Public Remarks: Beautiful 2 bedroom, 2 bathroom corner townhome in the extremely desirable Viewpointe at Waikele. The home has incredible panoramic views from Diamond Head to Waianae with the ocean in between as well as stunning professional landscaping. Vaulted ceilings, new A/C in living room and both bedrooms, new and modern ceiling fans, full-size washer and dryer in the unit, and double-paned windows. Reverse osmosis water and granite counter tops. Storage is amazing with a hallway closet, exterior storage closet, two closets in the primary bedroom, a large double closet in the second bedroom, and a shoe storage cabinet in the entry. Window treatments on every window to include brand-new luxury roller blinds in the living room. Two parking spaces- 1 covered and 1 open, and plenty of guest parking (such a rarity on the island). This gorgeous neighborhood is conveniently located- only a couple of minutes from H-1 as well as the Waikele Golf Course, Waikele Premium Outlets, grocery store, restaurants, Costco, and more! Pet friendly- please verify. ** ASSUMABLE VA LOAN @ 5.625%** (VA BUYERS ONLY) - Current monthly payment \$3,330 - Mortgage balance \$555,690 - LoanServ. Freedom Mortgage. **Sale Conditions:** None **Schools:** [Waikele](#), [Waipahu](#), [Waipahu](#) * [Request Showing](#), [Photos](#), [History](#), [Maps](#), [Deed](#), [Watch List](#), [Tax Info](#)



Address	Price	Bd & Bth	Living / Avg.	Land Avg.	Lanai	Occ.	FL	DOM
94-510 Lumiaina Street N201	\$580,000	2 & 2/0	716 \$810	1,019,173 \$1	110	61%	1	63

Address	Tax Maint. Ass.	Assessed Land	Assessed Building	Assessed Total	Ratio	Year & Remodeled
94-510 Lumiaina Street N201	\$80 \$572 \$0	\$256,300	\$259,300	\$515,600	112%	1999 & NA

[94-510 Lumiaina Street N201](#) - MLS#: [202408026](#) - Beautiful 2 bedroom, 2 bathroom corner townhome in the extremely desirable Viewpointe at Waikele. The home has incredible panoramic views from Diamond Head to Waianae with the ocean in between as well as stunning professional landscaping. Vaulted ceilings, new A/C in living room and both bedrooms, new and modern ceiling fans, full-size washer and dryer in the unit, and double-paned windows. Reverse osmosis water and granite counter tops. Storage is amazing with a hallway closet, exterior storage closet, two closets in the primary bedroom, a large double closet in the second bedroom, and a shoe storage cabinet in the entry. Window treatments on every window to include brand-new luxury roller blinds in the living room. Two parking spaces- 1 covered and 1 open, and plenty of guest parking (such a rarity on the island). This gorgeous neighborhood is conveniently located- only a couple of minutes from H-1 as well as the Waikele Golf Course, Waikele Premium Outlets, grocery store, restaurants, Costco, and more! Pet friendly- please verify. ** ASSUMABLE VA LOAN @ 5.625%** (VA BUYERS ONLY) - Current monthly payment \$3,330 - Mortgage balance \$555,690 - LoanServ. Freedom Mortgage. **Region:** Waipahu **Neighborhood:** Waikele **Condition:** Above Average **Parking:** Assigned, Guest, Open - 2 **Total Parking:** 2 **View:** Coastline, Diamond Head, Mountain **Frontage:** Pool: **Zoning:** 05 - R-5 Residential District **Sale Conditions:** None **Schools:** [Waikele](#), [Waipahu](#), [Waipahu](#) * [Request Showing](#), [Photos](#), [History](#), [Maps](#), [Deed](#), [Watch List](#), [Tax Info](#)

DOM = Days on Market, Occ. = Occupancy, FL = Floor Number