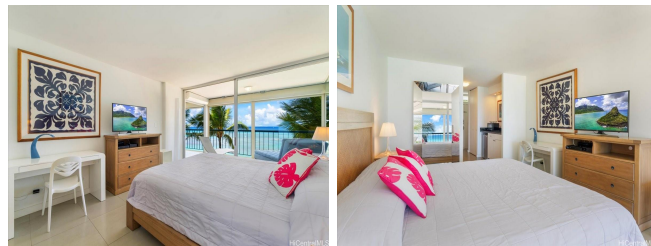


**Sans Souci Inc 2877 Kalakaua Avenue Unit 306, Honolulu 96815 \* \$485,000**

Bed: <b>0</b>	MLS#: <b>202408313, LH</b>	Year Built: <b>1960</b>
Bath: <b>1/0</b>	Status: <b>Active</b>	Remodeled: <b>2012</b>
Living Sq. Ft.: <b>359</b>	List Date & DOM: <b>05-02-2024 &amp; 76</b>	Total Parking: <b>0</b>
Land Sq. Ft.: <b>0</b>	Condition: <b>Excellent, Above Average</b>	<a href="#">Assessed Value</a>
Lanai Sq. Ft.: <b>116</b>	Frontage: <b>Ocean</b>	Building: <b>\$665,000</b>
Sq. Ft. Other: <b>0</b>	Tax/Year: <b>\$0/2023</b>	Land: <b>\$62,400</b>
Total Sq. Ft. <b>475</b>	Neighborhood: <b>Diamond Head</b>	Total: <b>\$727,400</b>
Maint./Assoc. <b>\$503 / \$1,668</b>	<a href="#">Flood Zone</a> : <b>Zone AE - Tool</b>	Stories / CPR: <b>8-14 / No</b>
Parking: <b>Guest, Secured Entry</b>	Frontage: <b>Ocean</b>	
<a href="#">Zoning</a> : <b>12 - A-2 Medium Density Apartme</b>	View: <b>City, Coastline, Ocean, Sunset</b>	

**Public Remarks:** This oceanfront studio unit boasts an incredible view and cool breezes. Remodeled in 2012, it includes a renovated ceiling (popcorn removed), a new bathroom vanity, and fresh tile throughout. Fully furnished with a king-size bed, it ensures convenience and comfort. Located at the Diamond Head end of Waikiki, Sans Souci is highly sought after, offering direct and secure access to the popular beach, a hotspot for Kama’aina to enjoy swimming, surfing, and paddling. Kapiolani Park and the majestic Diamond Head are just steps away, providing stunning views and recreational opportunities. Nestled in this coveted Waikiki enclave, Sans Souci provides its residents with exclusive access to the beloved beach, a favorite among Kama’aina for water activities. Adjacent to the building is the lush Kapiolani Park, with the iconic Diamond Head nearby, offering breathtaking vistas. Within this sought-after neighborhood, you'll find upscale dining, relaxing sunset lounges, and the esteemed Outrigger Canoe Club, enriching your living experience with luxurious amenities and vibrant local culture. **Sale Conditions:** None **Schools:** [Waikiki](#), [Washington](#), [Kaimuki](#) \* [Request Showing](#), [Photos](#), [History](#), [Maps](#), [Deed](#), [Watch List](#), [Tax Info](#)



Address	Price	Bd & Bth	Living / Avg.	Land   Avg.	DOM
<a href="#">2877 Kalakaua Avenue 306</a>	<b>\$485,000 LH</b>	0 & 1/0	359   \$1,351	0   \$inf	76

Address	Tax   Maint.   Ass.	Assessed Land	Assessed Building	Assessed Total	Ratio	Year & Remodeled
<a href="#">2877 Kalakaua Avenue 306</a>	\$0   \$503   \$1,668	\$62,400	\$665,000	\$727,400	67%	1960 & 2012

[2877 Kalakaua Avenue 306](#) - MLS#: [202408313](#) - This oceanfront studio unit boasts an incredible view and cool breezes. Remodeled in 2012, it includes a renovated ceiling (popcorn removed), a new bathroom vanity, and fresh tile throughout. Fully furnished with a king-size bed, it ensures convenience and comfort. Located at the Diamond Head end of Waikiki, Sans Souci is highly sought after, offering direct and secure access to the popular beach, a hotspot for Kama’aina to enjoy swimming, surfing, and paddling. Kapiolani Park and the majestic Diamond Head are just steps away, providing stunning views and recreational opportunities. Nestled in this coveted Waikiki enclave, Sans Souci provides its residents with exclusive access to the beloved beach, a favorite among Kama’aina for water activities. Adjacent to the building is the lush Kapiolani Park, with the iconic Diamond Head nearby, offering breathtaking vistas. Within this sought-after neighborhood, you'll find upscale dining, relaxing sunset lounges, and the esteemed Outrigger Canoe Club, enriching your living experience with luxurious amenities and vibrant local culture. **Region:** Diamond Head **Neighborhood:** Diamond Head **Condition:** Excellent, Above Average **Parking:** Guest, Secured Entry **Total Parking:** 0 **View:** City, Coastline, Ocean, Sunset **Frontage:** Ocean **Pool:** **Zoning:** 12 - A-2 Medium Density Apartme **Sale Conditions:** None **Schools:** [Waikiki](#), [Washington](#), [Kaimuki](#) \* [Request Showing](#), [Photos](#), [History](#), [Maps](#), [Deed](#), [Watch List](#), [Tax Info](#)

DOM = Days on Market