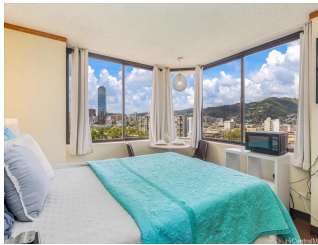


Hawaiian Monarch 444 Niu Street Unit 1114, Honolulu 96815 * \$298,000

Beds: 0	MLS#: 202408686, FS	Year Built: 1979
Bath: 1/0	Status: Active Under Contract	Remodeled:
Living Sq. Ft.: 247	List Date & DOM: 04-22-2024 & 61	Total Parking: 0
Land Sq. Ft.: 0	Condition: Above Average, Average	Assessed Value
Lanai Sq. Ft.: 0	Frontage:	Building: \$189,200
Sq. Ft. Other: 0	Tax/Year: \$312/2024	Land: \$93,900
Total Sq. Ft. 247	Neighborhood: Waikiki	Total: \$283,100
Maint./Assoc. \$433 / \$0	Flood Zone : Zone AO - Tool	Stories / CPR: 21+ / No
Parking: None	Frontage:	
Zoning : X2 - Apartment Precinct	View: City, Marina/Canal, Mountain	

Public Remarks: LEGAL SHORT TERM / DAILY VACATION RENTALS ALLOWED! This great Waikiki vacation friendly condo-hotel studio offers views of Ala Wai canal, park, mountain, valley, the brilliant colors of city lights, and partial ocean. Located on the 11th floor, a corner end unit with an efficient floor plan and rental ready! Hawaiian Monarch is great and one of a few condo-hotel building located near the entrance of Waikiki, it features an opened air lobby w/ resort amenities such as pool, fitness center, outdoor seating deck, a convenient store, cafe, eateries & many more enjoyable essentials of the world famous resort Waikiki location. **Sale Conditions:** None **Schools:** [Ala Wai](#), [Washington](#), [Mckinley](#) * [Request Showing](#), [Photos](#), [History](#), [Maps](#), [Deed](#), [Watch List](#), [Tax Info](#)



Address	Price	Bd & Bth	Living / Avg.	Land Avg.	DOM
444 Niu Street 1114	\$298,000	0 & 1/0	247 \$1,206	0 \$inf	61

Address	Tax Maint. Ass.	Assessed Land	Assessed Building	Assessed Total	Ratio	Year & Remodeled
444 Niu Street 1114	\$312 \$433 \$0	\$93,900	\$189,200	\$283,100	105%	1979 & NA

[444 Niu Street 1114](#) - MLS#: [202408686](#) - LEGAL SHORT TERM / DAILY VACATION RENTALS ALLOWED! This great Waikiki vacation friendly condo-hotel studio offers views of Ala Wai canal, park, mountain, valley, the brilliant colors of city lights, and partial ocean. Located on the 11th floor, a corner end unit with an efficient floor plan and rental ready! Hawaiian Monarch is great and one of a few condo-hotel building located near the entrance of Waikiki, it features an opened air lobby w/ resort amenities such as pool, fitness center, outdoor seating deck, a convenient store, cafe, eateries & many more enjoyable essentials of the world famous resort Waikiki location. **Region:** Metro **Neighborhood:** Waikiki **Condition:** Above Average, Average **Parking:** None **Total Parking:** 0 **View:** City, Marina/Canal, Mountain **Frontage:** **Pool:** **Zoning:** X2 - Apartment Precinct **Sale Conditions:** None **Schools:** [Ala Wai](#), [Washington](#), [Mckinley](#) * [Request Showing](#), [Photos](#), [History](#), [Maps](#), [Deed](#), [Watch List](#), [Tax Info](#)

DOM = Days on Market