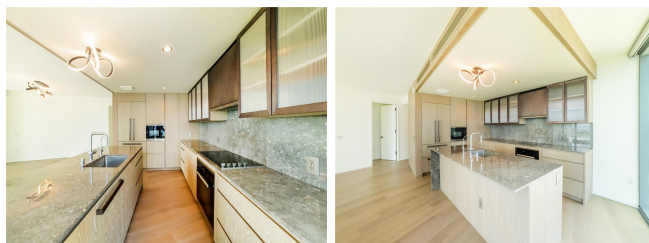


Koula 1000 Auahi Street Unit 1600, Honolulu 96814 * \$2,590,000 * Originally \$2,800,000

Beds: 3	MLS#: 202408928, FS	Year Built: 2021
Bath: 3/0	Status: Active	Remodeled:
Living Sq. Ft.: 1,457	List Date & DOM: 04-25-2024 & 82	Total Parking: 2
Land Sq. Ft.: 0	Condition: Excellent	Assessed Value
Lanai Sq. Ft.: 145	Frontage: Ocean	Building: \$2,291,400
Sq. Ft. Other: 0	Tax/Year: \$1,437/2024	Land: \$68,100
Total Sq. Ft. 1,602	Neighborhood: Kakaako	Total: \$2,359,500
Maint./Assoc. \$1,869 / \$0	Flood Zone : Zone AE - Tool	Stories / CPR: 15-20 / No
Parking: Covered - 2	Frontage: Ocean	
Zoning : Kak - Kakaako Community Development Project	View: Diamond Head, Mountain, Ocean, Sunset	

Public Remarks: This spacious 3-bedroom, 3-bathroom home boasts panoramic views of the mountains, ocean, and harbor from its two lanais. Unit features include upgraded wood flooring throughout, custom closet systems, motorized drapes, floor to ceiling windows, Miele appliances, and water filtration systems installed in your kitchen. Two side-by-side standard size parking on level 3. Enjoy island living and luxury resort-style amenities that include a fitness center, lap pool, two spas, cabanas, sunset bar and lounge, BBQ, kids playground, guest suites, dog park, private dining rooms and more. Walking distance to Whole Foods, urgent care clinic, farmers market and Ala Moana Beach Park. **Sale Conditions:** None **Schools:** [Kaahumanu](#), [Stevenson](#), [Mckinley](#) * [Request Showing](#), [Photos](#), [History](#), [Maps](#), [Deed](#), [Watch List](#), [Tax Info](#)



Address	Price	Bd & Bth	Living / Avg.	Land Avg.	DOM
1000 Auahi Street 1600	\$2,590,000	3 & 3/0	1,457 \$1,778	0 \$inf	82

Address	Tax Maint. Ass.	Assessed Land	Assessed Building	Assessed Total	Ratio	Year & Remodeled
1000 Auahi Street 1600	\$1,437 \$1,869 \$0	\$68,100	\$2,291,400	\$2,359,500	110%	2021 & NA

[1000 Auahi Street 1600](#) - MLS#: [202408928](#) - Original price was \$2,800,000 - This spacious 3-bedroom, 3-bathroom home boasts panoramic views of the mountains, ocean, and harbor from its two lanais. Unit features include upgraded wood flooring throughout, custom closet systems, motorized drapes, floor to ceiling windows, Miele appliances, and water filtration systems installed in your kitchen. Two side-by-side standard size parking on level 3. Enjoy island living and luxury resort-style amenities that include a fitness center, lap pool, two spas, cabanas, sunset bar and lounge, BBQ, kids playground, guest suites, dog park, private dining rooms and more. Walking distance to Whole Foods, urgent care clinic, farmers market and Ala Moana Beach Park. **Region:** Metro **Neighborhood:** Kakaako **Condition:** Excellent **Parking:** Covered - 2 **Total Parking:** 2 **View:** Diamond Head, Mountain, Ocean, Sunset **Frontage:** Ocean **Pool:** **Zoning:** Kak - Kakaako Community Development Project **Sale Conditions:** None **Schools:** [Kaahumanu](#), [Stevenson](#), [Mckinley](#) * [Request Showing](#), [Photos](#), [History](#), [Maps](#), [Deed](#), [Watch List](#), [Tax Info](#)

DOM = Days on Market