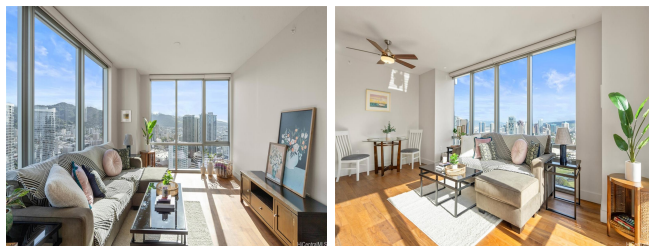


**Waihonua 1189 Waimanu Street Unit 3706, Honolulu 96814 \* Waihonua \* \$1,199,000**

Beds: <b>2</b>	MLS#: <b>202409339, FS</b>	Year Built: <b>2014</b>
Bath: <b>2/0</b>	Status: <b>Active</b>	Remodeled:
Living Sq. Ft.: <b>1,034</b>	List Date & DOM: <b>05-01-2024 &amp; 56</b>	Total Parking: <b>2</b>
Land Sq. Ft.: <b>0</b>	Condition: <b>Excellent</b>	<a href="#">Assessed Value</a>
Lanai Sq. Ft.: <b>0</b>	Frontage: <b>Other</b>	Building: <b>\$1,142,100</b>
Sq. Ft. Other: <b>0</b>	Tax/Year: <b>\$345/2023</b>	Land: <b>\$41,100</b>
Total Sq. Ft. <b>1,034</b>	Neighborhood: <b>Kakaako</b>	Total: <b>\$1,183,200</b>
Maint./Assoc. <b>\$1,223 / \$0</b>	<a href="#">Flood Zone</a> : <b>Zone AE - Tool</b>	Stories / CPR: <b>21+ / No</b>
Parking: <b>Assigned, Covered - 2, Secured Entry</b>	Frontage: <b>Other</b>	
<a href="#">Zoning</a> : <b>Kak - Kakaako Community Development Project</b>	View: <b>City, Mountain, Sunrise</b>	

**Public Remarks:** Aloha from arguably the best place on the planet for a tropical urban lifestyle. Nestled in proximity to Ala Moana Center, Ala Moana Beach Park, and Ward Village, this exquisite residence offers an unparalleled lifestyle. With its floor-to-ceiling windows, refined interior finishes, and premium Bosch appliances, every detail exudes sophistication. Situated as a corner end unit on the mountain side of the esteemed Waihonua luxury condominium, this home is impeccably maintained. Enjoy access to an array of exceptional building amenities, from an infinity-edge heated pool to a club room with a full kitchen, a movie theater, a fitness center, and two guest suites. Embrace a life of luxury and leisure in this remarkable setting. **Sale Conditions:** None **Schools:** , , \* [Request Showing](#), [Photos](#), [History](#), [Maps](#), [Deed](#), [Watch List](#), [Tax Info](#)



Address	Price	Bd & Bth	Living / Avg.	Land   Avg.	Lanai	Occ.	FL	DOM
<a href="#">1189 Waimanu Street 3706</a>	<a href="#">\$1,199,000</a>	2 & 2/0	1,034   \$1,160	0   \$inf	0	43%	37	56

Address	Tax   Maint.   Ass.	Assessed Land	Assessed Building	Assessed Total	Ratio	Year & Remodeled
<a href="#">1189 Waimanu Street 3706</a>	\$345   \$1,223   \$0	\$41,100	\$1,142,100	\$1,183,200	101%	2014 & NA

[1189 Waimanu Street 3706](#) - MLS#: [202409339](#) - Aloha from arguably the best place on the planet for a tropical urban lifestyle. Nestled in proximity to Ala Moana Center, Ala Moana Beach Park, and Ward Village, this exquisite residence offers an unparalleled lifestyle. With its floor-to-ceiling windows, refined interior finishes, and premium Bosch appliances, every detail exudes sophistication. Situated as a corner end unit on the mountain side of the esteemed Waihonua luxury condominium, this home is impeccably maintained. Enjoy access to an array of exceptional building amenities, from an infinity-edge heated pool to a club room with a full kitchen, a movie theater, a fitness center, and two guest suites. Embrace a life of luxury and leisure in this remarkable setting. **Region:** Metro **Neighborhood:** Kakaako **Condition:** Excellent **Parking:** Assigned, Covered - 2, Secured Entry **Total Parking:** 2 **View:** City, Mountain, Sunrise **Frontage:** Other **Pool:** **Zoning:** Kak - Kakaako Community Development Project **Sale Conditions:** None **Schools:** , , \* [Request Showing](#), [Photos](#), [History](#), [Maps](#), [Deed](#), [Watch List](#), [Tax Info](#)

DOM = Days on Market, Occ. = Occupancy, FL = Floor Number