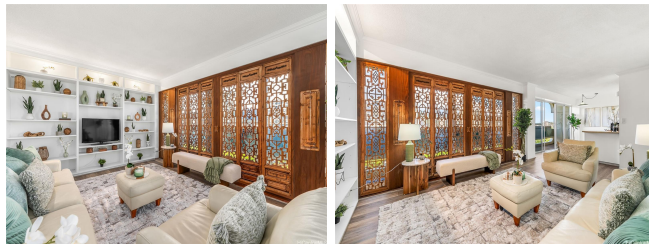


Twin Towers The 2085 Ala Wai Boulevard Unit A142, Honolulu 96815 * Twin Towers The *

\$529,000 * Originally \$569,000

Beds: 2	MLS#: 202410617, FS	Year Built: 1967
Bath: 1/1	Status: Active Under Contract	Remodeled:
Living Sq. Ft.: 942	List Date & DOM: 05-27-2024 & 19	Total Parking: 1
Land Sq. Ft.: 18,339	Condition: Average	Assessed Value
Lanai Sq. Ft.: 108	Frontage: Stream/Canal	Building: \$453,000
Sq. Ft. Other: 0	Tax/Year: \$158/2023	Land: \$89,500
Total Sq. Ft. 1,050	Neighborhood: Waikiki	Total: \$542,500
Maint./Assoc. \$968 / \$0	Flood Zone : Zone AO - Tool	Stories / CPR: 15-20 / No
Parking: Assigned, Covered - 1, Garage	Frontage: Stream/Canal	
Zoning : X2 - Apartment Precinct	View: City, Golf Course, Marina/Canal, Mountain, Ocean	

Public Remarks: Escape to your own slice of tropical paradise in this well-maintained oasis! Discover the allure of island living with this spacious 2-bedroom, 1½-bath retreat boasting natural light and refreshing breezes. Step onto the large lanai and immerse yourself in breathtaking 180-degree views of the mountain and vibrant cityscape below. Located in a secure building, this unit has been freshly painted and features sleek vinyl and ceramic flooring throughout. The kitchen showcases granite countertops and stainless steel appliances, perfect for creating culinary delights. Storage won't be an issue with ample space thoughtfully integrated throughout the home. With just moments separating you from the world-renowned Waikiki beach, this property isn't just a home; it's a lifestyle. Embrace the convenience of luxury shopping, fine dining, and entertainment options at your doorstep. Don't miss out on the chance to make this island retreat your own - schedule your viewing today and let the enchantment of island living captivate you! **Sale Conditions:** None **Schools:** [Ala Wai](#), [Washington](#), [Kaimuki](#) * [Request Showing](#), [Photos](#), [History](#), [Maps](#), [Deed](#), [Watch List](#), [Tax Info](#)



Address	Price	Bd & Bth	Living / Avg.	Land Avg.	Lanai	Occ.	FL	DOM
2085 Ala Wai Boulevard A142	\$529,000	2 & 1/1	942 \$562	18,339 \$29	108	47%	14	19

Address	Tax Maint. Ass.	Assessed Land	Assessed Building	Assessed Total	Ratio	Year & Remodeled
2085 Ala Wai Boulevard A142	\$158 \$968 \$0	\$89,500	\$453,000	\$542,500	98%	1967 & NA

[2085 Ala Wai Boulevard A142](#) - MLS#: [202410617](#) - Original price was \$569,000 - Escape to your own slice of tropical paradise in this well-maintained oasis! Discover the allure of island living with this spacious 2-bedroom, 1½-bath retreat boasting natural light and refreshing breezes. Step onto the large lanai and immerse yourself in breathtaking 180-degree views of the mountain and vibrant cityscape below. Located in a secure building, this unit has been freshly painted and features sleek vinyl and ceramic flooring throughout. The kitchen showcases granite countertops and stainless steel appliances, perfect for creating culinary delights. Storage won't be an issue with ample space thoughtfully integrated throughout the home. With just moments separating you from the world-renowned Waikiki beach, this property isn't just a home; it's a lifestyle. Embrace the convenience of luxury shopping, fine dining, and entertainment options at your doorstep. Don't miss out on the chance to make this island retreat your own - schedule your viewing today and let the enchantment of island living captivate you! **Region:** Metro **Neighborhood:** Waikiki **Condition:** Average **Parking:** Assigned, Covered - 1, Garage **Total Parking:** 1 **View:** City, Golf Course, Marina/Canal, Mountain, Ocean **Frontage:** Stream/Canal **Pool:** **Zoning:** X2 - Apartment Precinct **Sale Conditions:** None **Schools:** [Ala Wai](#), [Washington](#), [Kaimuki](#) * [Request Showing](#), [Photos](#), [History](#), [Maps](#), [Deed](#), [Watch List](#), [Tax Info](#)

DOM = Days on Market, Occ. = Occupancy, FL = Floor Number