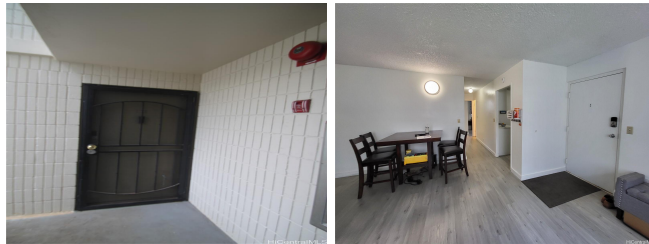


**Pearl Ridge Gdns & Twr 98-1032 Moanalua Road Unit 3-105, Aiea 96701 \* \$460,000 \***

**Originally \$475,000**

Beds: <b>2</b>	MLS#: <b>202410907, FS</b>	Year Built: <b>1976</b>
Bath: <b>2/0</b>	Status: <b>Active</b>	Remodeled: <b>2019</b>
Living Sq. Ft.: <b>778</b>	List Date & DOM: <b>05-07-2024 &amp; 71</b>	Total Parking: <b>1</b>
Land Sq. Ft.: <b>250,557</b>	Condition: <b>Above Average</b>	<a href="#">Assessed Value</a>
Lanai Sq. Ft.: <b>0</b>	Frontage: <b>Other</b>	Building: <b>\$206,300</b>
Sq. Ft. Other: <b>0</b>	Tax/Year: <b>\$37/2023</b>	Land: <b>\$121,000</b>
Total Sq. Ft. <b>778</b>	Neighborhood: <b>Pearlridge</b>	Total: <b>\$327,300</b>
Maint./Assoc. <b>\$755 / \$0</b>	<a href="#">Flood Zone</a> : <b>Zone X - Tool</b>	Stories / CPR: <b>Three / No</b>
Parking: <b>Assigned, Guest, Open - 1, Street</b>	Frontage: <b>Other</b>	
<a href="#">Zoning</a> : <b>13 - A-3 High Density Apartment</b>	View: <b>None</b>	

**Public Remarks:** Welcome to your newly updated ground floor unit in the beautiful and serene setting of Pearlridge Gardens & Tower. This 2 bedroom, 2 bath unit boasts a sleek, modern design with matching laminate flooring throughout, quartz counters and a convenient ground floor unit with one open parking stall. The spacious living area is perfect for entertaining, with a kitchen featuring coordinating stainless steel appliances and a large stainless steel sink. Just steps from the gated pool and remodeled recreation room with a kitchen and restroom. Both bedrooms are generously sized, with the primary bedroom offering a private en-suite bathroom. Enjoy the convenience of in-unit laundry, as well as access to the building's shared laundry. Amenities: resident manager, security guards, maintenance crew, about a dozen guest parking stalls, car wash area, a park on the property with BBQ areas, recreation room, jacuzzi, two swimming pools! The property recently completed restoration improvements and the parking structures and buildings were repainted in 2022. Directly across the street from Pearlridge. Easy to show, call to see it today! Seller is offering \$5,000 closing cost credit to the buyers. **Sale Conditions:** None **Schools:** [Pearl Ridge](#), [Aiea](#), [Aiea](#) \* [Request Showing](#), [Photos](#), [History](#), [Maps](#), [Deed](#), [Watch List](#), [Tax Info](#)



Address	Price	Bd & Bth	Living / Avg.	Land   Avg.	DOM
<a href="#">98-1032 Moanalua Road 3-105</a>	<b>\$460,000</b>	2 & 2/0	778   \$591	250,557   \$2	71

Address	Tax   Maint.   Ass.	Assessed Land	Assessed Building	Assessed Total	Ratio	Year & Remodeled
<a href="#">98-1032 Moanalua Road 3-105</a>	\$37   \$755   \$0	\$121,000	\$206,300	\$327,300	141%	1976 & 2019

[98-1032 Moanalua Road 3-105](#) - MLS#: [202410907](#) - Original price was \$475,000 - Welcome to your newly updated ground floor unit in the beautiful and serene setting of Pearlridge Gardens & Tower. This 2 bedroom, 2 bath unit boasts a sleek, modern design with matching laminate flooring throughout, quartz counters and a convenient ground floor unit with one open parking stall. The spacious living area is perfect for entertaining, with a kitchen featuring coordinating stainless steel appliances and a large stainless steel sink. Just steps from the gated pool and remodeled recreation room with a kitchen and restroom. Both bedrooms are generously sized, with the primary bedroom offering a private en-suite bathroom. Enjoy the convenience of in-unit laundry, as well as access to the building's shared laundry. Amenities: resident manager, security guards, maintenance crew, about a dozen guest parking stalls, car wash area, a park on the property with BBQ areas, recreation room, jacuzzi, two swimming pools! The property recently completed restoration improvements and the parking structures and buildings were repainted in 2022. Directly across the street from Pearlridge. Easy to show, call to see it today! Seller is offering \$5,000 closing cost credit to the buyers. **Region:** Pearl City **Neighborhood:** Pearlridge **Condition:** Above Average **Parking:** Assigned, Guest, Open - 1, Street **Total Parking:** 1 **View:** None **Frontage:** Other **Pool:** **Zoning:** 13 - A-3 High Density Apartment **Sale Conditions:** None **Schools:** [Pearl Ridge](#), [Aiea](#), [Aiea](#) \* [Request Showing](#), [Photos](#), [History](#), [Maps](#), [Deed](#), [Watch List](#), [Tax Info](#)

DOM = Days on Market