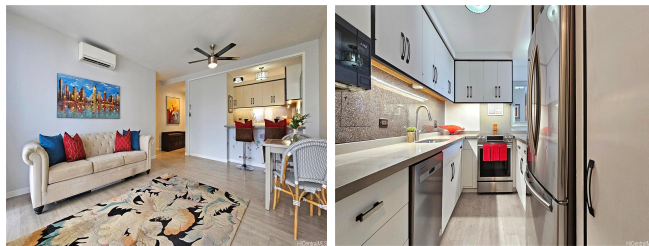


1350 Ala Moana 1350 Ala Moana Boulevard Unit 1411, Honolulu 96814 * \$798,880

Beds: 2	MLS#: 202410950, FS	Year Built: 1968
Bath: 2/0	Status: Active Under Contract	Remodeled:
Living Sq. Ft.: 968	List Date & DOM: 05-29-2024 & 14	Total Parking: 1
Land Sq. Ft.: 80,768	Condition: Above Average, Average	Assessed Value
Lanai Sq. Ft.: 100	Frontage: Other	Building: \$650,600
Sq. Ft. Other: 0	Tax/Year: \$159/2024	Land: \$54,100
Total Sq. Ft. 1,068	Neighborhood: Kakaako	Total: \$704,700
Maint./Assoc. \$1,312 / \$0	Flood Zone : Zone AE - Tool	Stories / CPR: 21+ / No
Parking: Assigned, Covered - 1	Frontage: Other	
Zoning : Kak - Kakaako Community Development Project	View: City, Coastline, Garden, Mountain, Ocean, Sunset	

Public Remarks: Experience luxury living at its finest in this highly desirable condo at 1350 Ala Moana. This 2-bedroom (2 closets per room), 2-bathroom, and deeded storage unit, offers ocean views overlooking the iconic Ala Moana Beach Park, creating a serene backdrop for your daily relaxation. Sip your favorite drink on the lanai as you witness stunning sunsets over the horizon. Luxury vinyl flooring, w/w carpeting in the bedrooms, and the removal of popcorn ceilings for a modern touch. Stay comfortable year-round with split AC in the living room, and window AC in the bedrooms. Conveniently located across world-renowned Ala Moana Shopping Center, Ward Village, and a plethora of acclaimed restaurants and entertainment options. Whether you're looking for a primary residence or a second home in paradise, this condo offers the perfect blend of location, luxury, and lifestyle. Don't miss this opportunity to own a piece of paradise in one of Honolulu's most coveted locations. **Sale Conditions:** None **Schools:** , , * [Request Showing](#), [Photos](#), [History](#), [Maps](#), [Deed](#), [Watch List](#), [Tax Info](#)



Address	Price	Bd & Bth	Living / Avg.	Land Avg.	DOM
1350 Ala Moana Boulevard 1411	\$798,880	2 & 2/0	968 \$825	80,768 \$10	14

Address	Tax Maint. Ass.	Assessed Land	Assessed Building	Assessed Total	Ratio	Year & Remodeled
1350 Ala Moana Boulevard 1411	\$159 \$1,312 \$0	\$54,100	\$650,600	\$704,700	113%	1968 & NA

[1350 Ala Moana Boulevard 1411](#) - MLS#: [202410950](#) - Experience luxury living at its finest in this highly desirable condo at 1350 Ala Moana. This 2-bedroom (2 closets per room), 2-bathroom, and deeded storage unit, offers ocean views overlooking the iconic Ala Moana Beach Park, creating a serene backdrop for your daily relaxation. Sip your favorite drink on the lanai as you witness stunning sunsets over the horizon. Luxury vinyl flooring, w/w carpeting in the bedrooms, and the removal of popcorn ceilings for a modern touch. Stay comfortable year-round with split AC in the living room, and window AC in the bedrooms. Conveniently located across world-renowned Ala Moana Shopping Center, Ward Village, and a plethora of acclaimed restaurants and entertainment options. Whether you're looking for a primary residence or a second home in paradise, this condo offers the perfect blend of location, luxury, and lifestyle. Don't miss this opportunity to own a piece of paradise in one of Honolulu's most coveted locations. **Region:** Metro **Neighborhood:** Kakaako **Condition:** Above Average, Average **Parking:** Assigned, Covered - 1 **Total Parking:** 1 **View:** City, Coastline, Garden, Mountain, Ocean, Sunset **Frontage:** Other **Pool:** **Zoning:** Kak - Kakaako Community Development Project **Sale Conditions:** None **Schools:** , , * [Request Showing](#), [Photos](#), [History](#), [Maps](#), [Deed](#), [Watch List](#), [Tax Info](#)

DOM = Days on Market