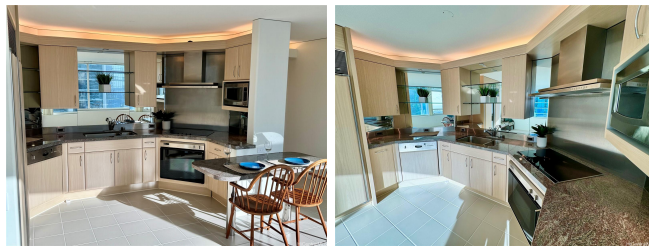


Hawaiki Tower 88 Piikoi Street Unit 3410, Honolulu 96814 * Hawaiki Tower * \$1,095,000

| | | |
|---|--|--------------------------------|
| Beds: 2 | MLS#: 202410987, FS | Year Built: 1999 |
| Bath: 2/0 | Status: Active | Remodeled: |
| Living Sq. Ft.: 997 | List Date & DOM: 05-31-2024 & 28 | Total Parking: 1 |
| Land Sq. Ft.: 267,981 | Condition: Excellent | Assessed Value |
| Lanai Sq. Ft.: 0 | Frontage: | Building: \$1,181,900 |
| Sq. Ft. Other: 0 | Tax/Year: \$557/2023 | Land: \$53,900 |
| Total Sq. Ft. 997 | Neighborhood: Kakaako | Total: \$1,235,800 |
| Maint./Assoc. \$847 / \$0 | Flood Zone : Zone AE - Tool | Stories / CPR: One / No |
| Parking: Assigned, Covered - 1, Guest, Secured Entry | Frontage: | |
| Zoning : Kak - Kakaako Community Development Project | View: City, Mountain, Ocean | |

Public Remarks: High floor unit with ocean and mountain views! This 2-bedroom/2-bath unit has a great layout, with each bedroom as primary bedroom with its own on-suite bathroom. The bedrooms are on opposite ends of the unit, separated by the living and kitchen for additional privacy. You will enjoy the ocean, mountain, and city views from this high-floor unit. This property was purchased new as a second home and in great condition due to its limited use throughout the years. This luxury building has excellent resort-like amenities which include 24-hour security, swimming pool, hot tub, tennis court, BBQ pavilion, putting green, playground, outdoor exercise areas, and an open-air winter garden on the 36th floor. This unit also has one covered parking stall and there is also plenty of guest parking on the main level. Ala Moana Mall is located across the street, with several restaurants and world-class shopping. You are also a short walk to the beach park to enjoy swimming, surfing, volleyball, or relaxing in the sun. **Sale Conditions:** None **Schools:** , , * [Request Showing](#), [Photos](#), [History](#), [Maps](#), [Deed](#), [Watch List](#), [Tax Info](#)



| Address | Price | Bd & Bth | Living / Avg. | Land Avg. | Lanai | Occ. | FL | DOM |
|---------------------------------------|-----------------------------|----------|---------------|---------------|-------|------|----|-----|
| 88 Piikoi Street 3410 | \$1,095,000 | 2 & 2/0 | 997 \$1,098 | 267,981 \$4 | 0 | 71% | 34 | 28 |

| Address | Tax Maint. Ass. | Assessed Land | Assessed Building | Assessed Total | Ratio | Year & Remodeled |
|---------------------------------------|---------------------|---------------|-------------------|----------------|-------|------------------|
| 88 Piikoi Street 3410 | \$557 \$847 \$0 | \$53,900 | \$1,181,900 | \$1,235,800 | 89% | 1999 & NA |

[88 Piikoi Street 3410](#) - MLS#: [202410987](#) - High floor unit with ocean and mountain views! This 2-bedroom/2-bath unit has a great layout, with each bedroom as primary bedroom with its own on-suite bathroom. The bedrooms are on opposite ends of the unit, separated by the living and kitchen for additional privacy. You will enjoy the ocean, mountain, and city views from this high-floor unit. This property was purchased new as a second home and in great condition due to its limited use throughout the years. This luxury building has excellent resort-like amenities which include 24-hour security, swimming pool, hot tub, tennis court, BBQ pavilion, putting green, playground, outdoor exercise areas, and an open-air winter garden on the 36th floor. This unit also has one covered parking stall and there is also plenty of guest parking on the main level. Ala Moana Mall is located across the street, with several restaurants and world-class shopping. You are also a short walk to the beach park to enjoy swimming, surfing, volleyball, or relaxing in the sun. **Region:** Metro **Neighborhood:** Kakaako **Condition:** Excellent **Parking:** Assigned, Covered - 1, Guest, Secured Entry **Total Parking:** 1 **View:** City, Mountain, Ocean **Frontage:** **Pool:** **Zoning:** Kak - Kakaako Community Development Project **Sale Conditions:** None **Schools:** , , * [Request Showing](#), [Photos](#), [History](#), [Maps](#), [Deed](#), [Watch List](#), [Tax Info](#)

DOM = Days on Market, Occ. = Occupancy, FL = Floor Number