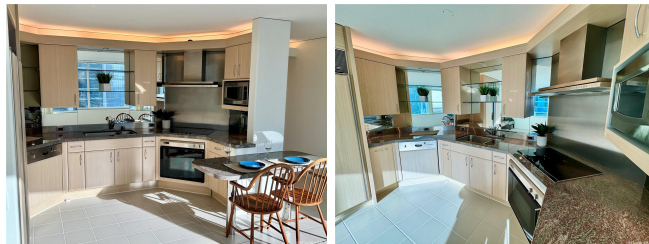


Hawaiki Tower 88 Piikoi Street Unit 3410, Honolulu 96814 * \$1,049,000 * Originally \$1,095,000

Bed: 2	MLS#: 202410987, FS	Year Built: 1999
Bath: 2/0	Status: Active	Remodeled:
Living Sq. Ft.: 997	List Date & DOM: 05-31-2024 & 45	Total Parking: 1
Land Sq. Ft.: 267,981	Condition: Excellent	Assessed Value
Lanai Sq. Ft.: 0	Frontage:	Building: \$1,181,900
Sq. Ft. Other: 0	Tax/Year: \$557/2023	Land: \$53,900
Total Sq. Ft. 997	Neighborhood: Kakaako	Total: \$1,235,800
Maint./Assoc. \$847 / \$0	Flood Zone : Zone AE - Tool	Stories / CPR: One / No
Parking: Assigned, Covered - 1, Guest, Secured Entry	Frontage:	
Zoning : Kak - Kakaako Community Development Project	View: City, Mountain, Ocean	

Public Remarks: High floor unit with ocean and mountain views! This 2-bedroom/2-bath unit has a great layout, with each bedroom as primary bedroom with its own on-suite bathroom. The bedrooms are on opposite ends of the unit, separated by the living and kitchen for additional privacy. You will enjoy the ocean, mountain, and city views from this high-floor unit. This property was purchased new as a second home and in great condition due to its limited use throughout the years. This luxury building has excellent resort-like amenities which include 24-hour security, swimming pool, hot tub, tennis court, BBQ pavilion, putting green, playground, outdoor exercise areas, and an open-air winter garden on the 36th floor. This unit also has one covered parking stall and there is also plenty of guest parking on the main level. Ala Moana Mall is located across the street, with several restaurants and world-class shopping. You are also a short walk to the beach park to enjoy swimming, surfing, volleyball, or relaxing in the sun. **Sale Conditions:** None **Schools:** , , * [Request Showing](#), [Photos](#), [History](#), [Maps](#), [Deed](#), [Watch List](#), [Tax Info](#)



Address	Price	Bd & Bth	Living / Avg.	Land Avg.	DOM
88 Piikoi Street 3410	\$1,049,000	2 & 2/0	997 \$1,052	267,981 \$4	45

Address	Tax Maint. Ass.	Assessed Land	Assessed Building	Assessed Total	Ratio	Year & Remodeled
88 Piikoi Street 3410	\$557 \$847 \$0	\$53,900	\$1,181,900	\$1,235,800	85%	1999 & NA

[88 Piikoi Street 3410](#) - MLS#: [202410987](#) - Original price was \$1,095,000 - High floor unit with ocean and mountain views! This 2-bedroom/2-bath unit has a great layout, with each bedroom as primary bedroom with its own on-suite bathroom. The bedrooms are on opposite ends of the unit, separated by the living and kitchen for additional privacy. You will enjoy the ocean, mountain, and city views from this high-floor unit. This property was purchased new as a second home and in great condition due to its limited use throughout the years. This luxury building has excellent resort-like amenities which include 24-hour security, swimming pool, hot tub, tennis court, BBQ pavilion, putting green, playground, outdoor exercise areas, and an open-air winter garden on the 36th floor. This unit also has one covered parking stall and there is also plenty of guest parking on the main level. Ala Moana Mall is located across the street, with several restaurants and world-class shopping. You are also a short walk to the beach park to enjoy swimming, surfing, volleyball, or relaxing in the sun. **Region:** Metro **Neighborhood:** Kakaako **Condition:** Excellent **Parking:** Assigned, Covered - 1, Guest, Secured Entry **Total Parking:** 1 **View:** City, Mountain, Ocean **Frontage:** **Pool:** **Zoning:** Kak - Kakaako Community Development Project **Sale Conditions:** None **Schools:** , , * [Request Showing](#), [Photos](#), [History](#), [Maps](#), [Deed](#), [Watch List](#), [Tax Info](#)

DOM = Days on Market