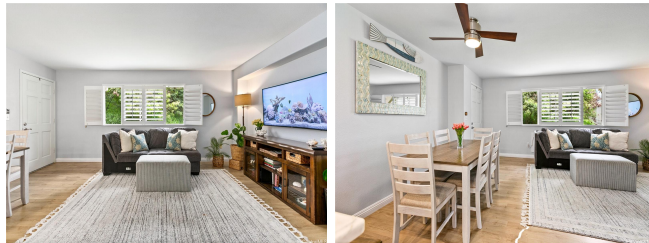


**Kaluauui 7232 Hawaii Kai Drive Unit B, Honolulu 96825 \* \$818,000**

Beds: <b>2</b>	MLS#: <b>202411024, FS</b>	Year Built: <b>2001</b>
Bath: <b>2/1</b>	Status: <b>Active</b>	Remodeled: <b>2017</b>
Living Sq. Ft.: <b>952</b>	List Date & DOM: <b>05-10-2024 &amp; 47</b>	Total Parking: <b>2</b>
Land Sq. Ft.: <b>0</b>	Condition: <b>Excellent</b>	<a href="#">Assessed Value</a>
Lanai Sq. Ft.: <b>0</b>	Frontage: <b>Other</b>	Building: <b>\$178,700</b>
Sq. Ft. Other: <b>0</b>	Tax/Year: <b>\$208/2023</b>	Land: <b>\$739,200</b>
Total Sq. Ft. <b>952</b>	Neighborhood: <b>West Marina</b>	Total: <b>\$817,900</b>
Maint./Assoc. <b>\$550 / \$0</b>	<a href="#">Flood Zone</a> : <b>Zone D - Tool</b>	Stories / CPR: <b>Three / No</b>
Parking: <b>Covered - 2, Garage</b>	Frontage: <b>Other</b>	
<a href="#">Zoning</a> : <b>12 - A-2 Medium Density Apartme</b>	View: <b>Garden</b>	

**Public Remarks:** Seldom available with attached 2 car garage. Kaluauui is a small, quiet complex with low maintenance fee. Beautifully upgraded 2 bedroom 2.5 bath townhome.. plantation shutters, marble kitchen countertops with farmhouse kitchen sink, closet systems, and new flooring throughout. Garage is on the street level, enter stairway to main living areas (kitchen, living room, dining room, guest bathroom), then high ceiling staircase to upper level with two bedrooms and two baths with washer and dryer. Living room and primary bedroom look out to open space behind ... lots of privacy. Conveniently located near post office, supermarket, Costco, restaurants ... in total move in condition. A must see! **Sale Conditions:** None  
**Schools:** [Hahaione](#), [Niu Valley](#), [Kaiser](#) \* [Request Showing](#), [Photos](#), [History](#), [Maps](#), [Deed](#), [Watch List](#), [Tax Info](#)



Address	Price	Bd & Bth	Living / Avg.	Land   Avg.	DOM
<a href="#">7232 Hawaii Kai Drive B</a>	<a href="#">\$818,000</a>	2 & 2/1	952   \$859	0   \$inf	47

Address	Tax   Maint.   Ass.	Assessed Land	Assessed Building	Assessed Total	Ratio	Year & Remodeled
<a href="#">7232 Hawaii Kai Drive B</a>	\$208   \$550   \$0	\$739,200	\$178,700	\$817,900	100%	2001 & 2017

[7232 Hawaii Kai Drive B](#) - MLS#: [202411024](#) - Seldom available with attached 2 car garage. Kaluauui is a small, quiet complex with low maintenance fee. Beautifully upgraded 2 bedroom 2.5 bath townhome.. plantation shutters, marble kitchen countertops with farmhouse kitchen sink, closet systems, and new flooring throughout. Garage is on the street level, enter stairway to main living areas (kitchen, living room, dining room, guest bathroom), then high ceiling staircase to upper level with two bedrooms and two baths with washer and dryer. Living room and primary bedroom look out to open space behind ... lots of privacy. Conveniently located near post office, supermarket, Costco, restaurants ... in total move in condition. A must see! **Region:** Hawaii Kai **Neighborhood:** West Marina **Condition:** Excellent **Parking:** Covered - 2, Garage **Total Parking:** 2 **View:** Garden **Frontage:** Other **Pool:** **Zoning:** 12 - A-2 Medium Density Apartme **Sale Conditions:** None **Schools:** [Hahaione](#), [Niu Valley](#), [Kaiser](#) \* [Request Showing](#), [Photos](#), [History](#), [Maps](#), [Deed](#), [Watch List](#), [Tax Info](#)

DOM = Days on Market