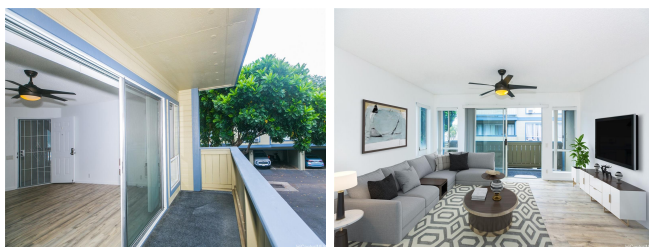


## Sun Rise K 91-273 Hanapouli Circle Unit 13G, Ewa Beach 96706 \* \$499,000

Beds: <b>2</b>	MLS#: <b>202411315, FS</b>	Year Built: <b>1993</b>
Bath: <b>2/0</b>	Status: <b>Active Under Contract</b>	Remodeled:
Living Sq. Ft.: <b>811</b>	List Date & DOM: <b>06-05-2024 &amp; 14</b>	Total Parking: <b>2</b>
Land Sq. Ft.: <b>47,785</b>	Condition: <b>Above Average, Average</b>	<a href="#">Assessed Value</a>
Lanai Sq. Ft.: <b>60</b>	Frontage: <b>Other</b>	Building: <b>\$407,200</b>
Sq. Ft. Other: <b>0</b>	Tax/Year: <b>\$88/2023</b>	Land: <b>\$95,400</b>
Total Sq. Ft. <b>871</b>	Neighborhood: <b>Ewa</b>	Total: <b>\$502,600</b>
Maint./Assoc. <b>\$435 / \$50</b>	<a href="#">Flood Zone</a> : <b>Zone D - Tool</b>	Stories / CPR: <b>/ No</b>
Parking: <b>Assigned, Carport, Covered - 1, Guest</b>	Frontage: <b>Other</b>	
<a href="#">Zoning</a> : <b>11 - A-1 Low Density Apartment</b>	View: <b>None</b>	

**Public Remarks:** Discover the perfect blend of comfort and convenience in this beautiful 2-bedroom, 2-bathroom walk-up unit located on the second floor in the Sun Rise community in Ewa. This home features an upgraded open-style kitchen that flows seamlessly into the living room, complete with luxury vinyl plank flooring throughout. Enjoy the breeze on your balcony, or stay cool with AC window units in both the living room and bedrooms. With a gas range, gas water heater, and gas dryer, this home is designed for efficiency. You'll have two covered parking spaces, with one being covered, and additional exterior storage available. The community offers fantastic amenities, including a pool and BBQ area in the recreation space. Maintenance fees cover water, sewer, and common expenses. Conveniently located close to stores, restaurants, parks, and more. This home is ready for its next owner to enjoy and care for in the years to come. Don't miss out on this incredible opportunity! Get in touch with your favorite Realtor to schedule a tour today! **Sale Conditions:** None **Schools:** [Ewa Beach](#), [Ewa Makai](#), [Campbell](#) \* [Request Showing](#), [Photos](#), [History](#), [Maps](#), [Deed](#), [Watch List](#), [Tax Info](#)



Address	Price	Bd & Bth	Living / Avg.	Land   Avg.	DOM
<a href="#">91-273 Hanapouli Circle 13G</a>	<a href="#">\$499,000</a>	2 & 2/0	811   \$615	47,785   \$10	14

Address	Tax   Maint.   Ass.	Assessed Land	Assessed Building	Assessed Total	Ratio	Year & Remodeled
<a href="#">91-273 Hanapouli Circle 13G</a>	\$88   \$435   \$50	\$95,400	\$407,200	\$502,600	99%	1993 & NA

[91-273 Hanapouli Circle 13G](#) - MLS#: [202411315](#) - Discover the perfect blend of comfort and convenience in this beautiful 2-bedroom, 2-bathroom walk-up unit located on the second floor in the Sun Rise community in Ewa. This home features an upgraded open-style kitchen that flows seamlessly into the living room, complete with luxury vinyl plank flooring throughout. Enjoy the breeze on your balcony, or stay cool with AC window units in both the living room and bedrooms. With a gas range, gas water heater, and gas dryer, this home is designed for efficiency. You'll have two covered parking spaces, with one being covered, and additional exterior storage available. The community offers fantastic amenities, including a pool and BBQ area in the recreation space. Maintenance fees cover water, sewer, and common expenses. Conveniently located close to stores, restaurants, parks, and more. This home is ready for its next owner to enjoy and care for in the years to come. Don't miss out on this incredible opportunity! Get in touch with your favorite Realtor to schedule a tour today! **Region:** Ewa Plain **Neighborhood:** Ewa **Condition:** Above Average, Average **Parking:** Assigned, Carport, Covered - 1, Guest **Total Parking:** 2 **View:** None **Frontage:** Other **Pool:** **Zoning:** 11 - A-1 Low Density Apartment **Sale Conditions:** None **Schools:** [Ewa Beach](#), [Ewa Makai](#), [Campbell](#) \* [Request Showing](#), [Photos](#), [History](#), [Maps](#), [Deed](#), [Watch List](#), [Tax Info](#)

DOM = Days on Market