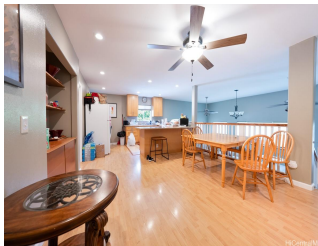
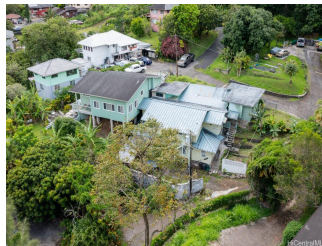


1929 Huea Place, Honolulu 96819 ** \$1,700,000

Beds: 9	MLS#: 202411455, FS	Year Built: 1957
Bath: 3/1	Status: Active	Remodeled: 2008
Living Sq. Ft.: 3,349	List Date & DOM: 05-17-2024 & 42	Total Parking: 6
Land Sq. Ft.: 10,897	Condition: Above Average	Assessed Value
Lanai Sq. Ft.: 443	Frontage:	Building: \$379,100
Sq. Ft. Other: 768	Tax/Year: \$268/2023	Land: \$738,700
Total Sq. Ft. 4,560	Neighborhood: Kalihi Valley	Total: \$1,117,800
Maint./Assoc. \$0 / \$0	Flood Zone : Zone X - Tool	Stories / CPR: Two, Split Level / No
Parking: 3 Car+, Carport, Driveway	Frontage:	
Zoning : 03 - R10 - Residential District	View: Mountain	

Public Remarks: Welcome to 1929 Huea Place, a hidden gem with three units that can blend into one large estate. The main home offers an open floor plan with 3 bdrms / 2 baths with its own separate laundry area and private yard space. The second unit offers an old Hawaii home charm with a modern kitchen and is outfitted with 3 bdrms 1 bath with an outdoor shower. The third unit is a cozy 3 bdrm 1.5 bath with a small kitchenette and separate yard space. The possibilities of this estate are endless. **Sale Conditions:** None **Schools:** , , * [Request Showing](#), [Photos](#), [History](#), [Maps](#), [Deed](#), [Watch List](#), [Tax Info](#)



Address	Price	Bd & Bth	Living / Avg.	Land Avg.	Lanai	Occ.	FL	DOM
1929 Huea Place	\$1,700,000	9 & 3/1	3,349 \$508	10,897 \$156	443	0%	0	42

Address	Tax Maint. Ass.	Assessed Land	Assessed Building	Assessed Total	Ratio	Year & Remodeled
1929 Huea Place	\$268 \$0 \$0	\$738,700	\$379,100	\$1,117,800	152%	1957 & 2008

[1929 Huea Place](#) - MLS#: [202411455](#) - Welcome to 1929 Huea Place, a hidden gem with three units that can blend into one large estate. The main home offers an open floor plan with 3 bdrms / 2 baths with its own separate laundry area and private yard space. The second unit offers an old Hawaii home charm with a modern kitchen and is outfitted with 3 bdrms 1 bath with an outdoor shower. The third unit is a cozy 3 bdrm 1.5 bath with a small kitchenette and separate yard space. The possibilities of this estate are endless. **Region:** Metro **Neighborhood:** Kalihi Valley **Condition:** Above Average **Parking:** 3 Car+, Carport, Driveway **Total Parking:** 6 **View:** Mountain **Frontage:** **Pool:** None **Zoning:** 03 - R10 - Residential District **Sale Conditions:** None **Schools:** , , * [Request Showing](#), [Photos](#), [History](#), [Maps](#), [Deed](#), [Watch List](#), [Tax Info](#)

DOM = Days on Market, Occ. = Occupancy, FL = Floor Number