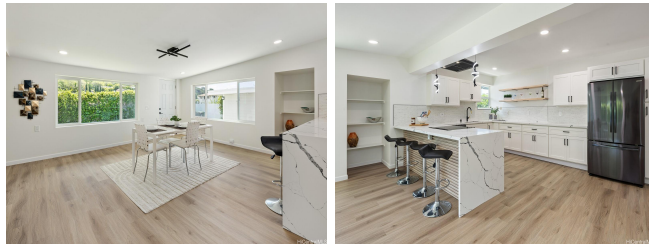


370 E Hind Drive, Honolulu 96821 * * \$1,744,000

Beds: 3	MLS#: 202411597, FS	Year Built: 1951
Bath: 2/0	Status: Active	Remodeled: 2024
Living Sq. Ft.: 1,638	List Date & DOM: 06-13-2024 & 15	Total Parking: 2
Land Sq. Ft.: 7,513	Condition: Excellent	Assessed Value
Lanai Sq. Ft.: 0	Frontage: Other	Building: \$270,700
Sq. Ft. Other: 0	Tax/Year: \$345/2023	Land: \$1,013,400
Total Sq. Ft. 1,638	Neighborhood: Aina Haina Area	Total: \$1,284,100
Maint./Assoc. \$0 / \$0	Flood Zone : Zone AE - Tool	Stories / CPR: One / No
Parking: 2 Car, Carport, Driveway, Street	Frontage: Other	
Zoning : 04 - R-7.5 Residential District	View: Mountain	

Public Remarks: Welcome to this exquisite corner-lot residence nestled in the tranquil Aina Haina neighborhood! This fully renovated single-family home boasts 3 bedrooms and 2 bathrooms on a spacious 7,513 sq ft lot. Revel in the bright, modern interiors featuring an open-concept kitchen with brand new appliances. Expansive living area, perfect for entertaining guests and celebrations, or unwind with ultimate comfort spending time with loved ones! Beautiful primary bedroom with a walk-in closet including ample space for your wardrobe! Primary bathroom includes modern features like a digital mirror and dual showerheads. The expansive landscaped yard features lush greenery, and a variety of flowering plants, providing a relaxing outdoor haven. Don't forget to wash off after the beach with the outdoor shower! Privacy is assured with an electric gate securing the property. Virtual tour available. **Sale Conditions:** None **Schools:** [Aina Haina](#), [Niu Valley](#), [Kalani](#) * [Request Showing](#), [Photos](#), [History](#), [Maps](#), [Deed](#), [Watch List](#), [Tax Info](#)



Address	Price	Bd & Bth	Living / Avg.	Land Avg.	Lanai	Occ.	FL	DOM
370 E Hind Drive	\$1,744,000	3 & 2/0	1,638 \$1,065	7,513 \$232	0	0%	0	15

Address	Tax Maint. Ass.	Assessed Land	Assessed Building	Assessed Total	Ratio	Year & Remodeled
370 E Hind Drive	\$345 \$0 \$0	\$1,013,400	\$270,700	\$1,284,100	136%	1951 & 2024

[370 E Hind Drive](#) - MLS#: [202411597](#) - Welcome to this exquisite corner-lot residence nestled in the tranquil Aina Haina neighborhood! This fully renovated single-family home boasts 3 bedrooms and 2 bathrooms on a spacious 7,513 sq ft lot. Revel in the bright, modern interiors featuring an open-concept kitchen with brand new appliances. Expansive living area, perfect for entertaining guests and celebrations, or unwind with ultimate comfort spending time with loved ones! Beautiful primary bedroom with a walk-in closet including ample space for your wardrobe! Primary bathroom includes modern features like a digital mirror and dual showerheads. The expansive landscaped yard features lush greenery, and a variety of flowering plants, providing a relaxing outdoor haven. Don't forget to wash off after the beach with the outdoor shower! Privacy is assured with an electric gate securing the property. Virtual tour available. **Region:** Diamond Head **Neighborhood:** Aina Haina Area **Condition:** Excellent **Parking:** 2 Car, Carport, Driveway, Street **Total Parking:** 2 **View:** Mountain **Frontage:** Other **Pool:** None **Zoning:** 04 - R-7.5 Residential District **Sale Conditions:** None **Schools:** [Aina Haina](#), [Niu Valley](#), [Kalani](#) * [Request Showing](#), [Photos](#), [History](#), [Maps](#), [Deed](#), [Watch List](#), [Tax Info](#)

DOM = Days on Market, Occ. = Occupancy, FL = Floor Number