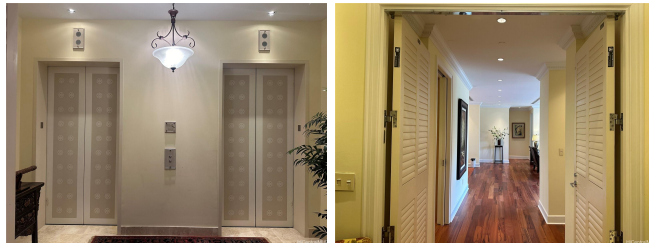


Courtyards At Punahou 1740 S Beretania Street Unit 33, Honolulu 96826 * \$1,595,000

Beds: 2	MLS#: 202411799, FS	Year Built: 1993
Bath: 2/1	Status: Active	Remodeled:
Living Sq. Ft.: 1,935	List Date & DOM: 06-08-2024 & 37	Total Parking: 2
Land Sq. Ft.: 51,357	Condition: Above Average	Assessed Value
Lanai Sq. Ft.: 216	Frontage:	Building: \$1,187,300
Sq. Ft. Other: 0	Tax/Year: \$744/2023	Land: \$244,600
Total Sq. Ft. 2,151	Neighborhood: Moiliili	Total: \$1,431,900
Maint./Assoc. \$2,349 / \$0	Flood Zone : Zone X - Tool	Stories / CPR: Two / No
Parking: Assigned, Covered - 2, Secured Entry	Frontage:	
Zoning : 12 - A-2 Medium Density Apartme	View: City	

Public Remarks: Experience the height of comfort at The Courtyards at Punahou, where we take luxury to the next level. Picture yourself in a spacious haven, spanning over 1,900 sq. ft., designed with attention to detail to offer the calm of a standalone home feel. Privacy and Exclusivity: Your experience starts as soon as you enter the secure elevator, which takes you straight to your private foyer—the entrance to your own slice of paradise. Enjoy the nice views of the city from your living room, where the gentle mountain breezes flow through your open lanai, providing a peaceful escape from the city’s energy. Welcome to The Courtyards at Punahou—your dream of a private, upscale retreat is here. More than a place to live, it’s a place to flourish. The residence’s prime location ensures you’re just a stone’s throw away from highways, shopping, hospitals, and other important places. **Sale Conditions:** None **Schools:** [Lunalilo](#), [Washington](#), [Kaimuki](#) * [Request Showing](#), [Photos](#), [History](#), [Maps](#), [Deed](#), [Watch List](#), [Tax Info](#)



Address	Price	Bd & Bth	Living / Avg.	Land Avg.	DOM
1740 S Beretania Street 33	\$1,595,000	2 & 2/1	1,935 \$824	51,357 \$31	37

Address	Tax Maint. Ass.	Assessed Land	Assessed Building	Assessed Total	Ratio	Year & Remodeled
1740 S Beretania Street 33	\$744 \$2,349 \$0	\$244,600	\$1,187,300	\$1,431,900	111%	1993 & NA

[1740 S Beretania Street 33](#) - MLS#: [202411799](#) - Experience the height of comfort at The Courtyards at Punahou, where we take luxury to the next level. Picture yourself in a spacious haven, spanning over 1,900 sq. ft., designed with attention to detail to offer the calm of a standalone home feel. Privacy and Exclusivity: Your experience starts as soon as you enter the secure elevator, which takes you straight to your private foyer—the entrance to your own slice of paradise. Enjoy the nice views of the city from your living room, where the gentle mountain breezes flow through your open lanai, providing a peaceful escape from the city’s energy. Welcome to The Courtyards at Punahou—your dream of a private, upscale retreat is here. More than a place to live, it’s a place to flourish. The residence’s prime location ensures you’re just a stone’s throw away from highways, shopping, hospitals, and other important places. **Region:** Metro **Neighborhood:** Moiliili **Condition:** Above Average **Parking:** Assigned, Covered - 2, Secured Entry **Total Parking:** 2 **View:** City **Frontage:** **Pool:** **Zoning:** 12 - A-2 Medium Density Apartme **Sale Conditions:** None **Schools:** [Lunalilo](#), [Washington](#), [Kaimuki](#) * [Request Showing](#), [Photos](#), [History](#), [Maps](#), [Deed](#), [Watch List](#), [Tax Info](#)

DOM = Days on Market