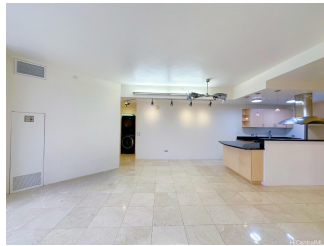


**Imperial Plaza 725 Kapiolani Boulevard Unit 2002, Honolulu 96813 \* \$689,000**

Sold Price: \$670,000      Sold Date: 07-15-2024      Sold Ratio: 97%  
 Beds: **2**      MLS#: [202411808](#), FS      Year Built: **1991**  
 Bath: **2/0**      Status: **Sold**      Remodeled: **2018**  
 Living Sq. Ft.: **911**      List Date & DOM: **05-23-2024 & 9**      Total Parking: **2**  
 Land Sq. Ft.: **110,294**      Condition: **Excellent, Above Average**      [Assessed Value](#)  
 Lanai Sq. Ft.: **94**      Frontage:      Building: **\$498,800**  
 Sq. Ft. Other: **0**      Tax/Yr: **\$142/2024**      Land: **\$93,900**  
 Total Sq. Ft. **1,005**      Neighborhood: **Kakaako**      Total: **\$592,700**  
 Maint./Assoc. **\$1,242 / \$0**      [Flood Zone](#): **Zone X - Tool**      Stories / CPR: / **No**  
 Parking: **Covered - 2, Garage, Guest, Secured Entry**      Frontage:  
[Zoning](#): **Kak - Kakaako Community Development Project**      View: **City, Ocean**

**Public Remarks:** Excellent condition 20th floor unit in Imperial Plaza with open kitchen! The unit features 2 bedrooms, 2 bathrooms, and 2 assigned covered parking stalls side by side and storage. The unit also boasts large windows in both bedrooms along with living room to bring in tons of natural lighting and has direct access to your own private lanai. Imperial Plaza is located in the heart of Kakaako in close proximity to restaurants, shops, salons, shopping centers, Ward area along with Ala Moana! Unit #2002 has access to direct breathtaking views of the ocean side along with the city for you to enjoy. Imperial Plaza offers amenities such as secured entry, resident manager, security, pool on property along with outside recreation area just to name a few. Don't wait, schedule your viewing today to come take a look at this beautiful unit! Maintenance fee is \$1,241.89, \$78.7 special assessment, and \$42.11 for Hawaiian Telcom Bulk Cable TV. Total \$1,362.70

**Sale Conditions:** None **Schools:** , , \* [Request Showing](#), [Photos](#), [History](#), [Maps](#), [Deed](#), [Watch List](#), [Tax Info](#)



Address	Price	Bd & Bth	Living / Avg.	Land   Avg.	DOM
<a href="#">725 Kapiolani Boulevard 2002</a>	<a href="#">\$689,000</a>	2 & 2/0	911   \$756	110,294   \$6	9

Address	Tax   Maint.   Ass.	Assessed Land	Assessed Building	Assessed Total	Ratio	Year & Remodeled
<a href="#">725 Kapiolani Boulevard 2002</a>	\$142   \$1,242   \$0	\$93,900	\$498,800	\$592,700	116%	1991 & 2018

Address	Sold Price	Sold Date	Sold Ratio	Original Ratio	Sold Terms
<a href="#">725 Kapiolani Boulevard 2002</a>	\$670,000	07-15-2024	97%	97%	Conventional

[725 Kapiolani Boulevard 2002](#) - MLS#: [202411808](#) - Excellent condition 20th floor unit in Imperial Plaza with open kitchen! The unit features 2 bedrooms, 2 bathrooms, and 2 assigned covered parking stalls side by side and storage. The unit also boasts large windows in both bedrooms along with living room to bring in tons of natural lighting and has direct access to your own private lanai. Imperial Plaza is located in the heart of Kakaako in close proximity to restaurants, shops, salons, shopping centers, Ward area along with Ala Moana! Unit #2002 has access to direct breathtaking views of the ocean side along with the city for you to enjoy. Imperial Plaza offers amenities such as secured entry, resident manager, security, pool on property along with outside recreation area just to name a few. Don't wait, schedule your viewing today to come take a look at this beautiful unit! Maintenance fee is \$1,241.89, \$78.7 special assessment, and \$42.11 for Hawaiian Telcom Bulk Cable TV. Total \$1,362.70 **Region:** Metro **Neighborhood:** Kakaako **Condition:** Excellent, Above Average **Parking:** Covered - 2, Garage, Guest, Secured Entry **Total Parking:** 2 **View:** City, Ocean **Frontage:** **Pool:** **Zoning:** Kak - Kakaako Community Development Project **Sale Conditions:** None **Schools:** , , \* [Request Showing](#), [Photos](#), [History](#), [Maps](#), [Deed](#), [Watch List](#), [Tax Info](#)

DOM = Days on Market