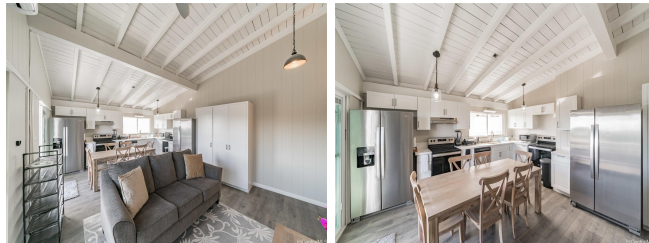


4576 Kalaniana'ole Highway, Honolulu 96821 * \$1,425,000 * Originally \$1,500,000

| | | |
|---|---|--------------------------------|
| Beds: 6 | MLS#: 202411888, FS | Year Built: 1961 |
| Bath: 4/0 | Status: Active | Remodeled: 2023 |
| Living Sq. Ft.: 2,025 | List Date & DOM: 05-23-2024 & 34 | Total Parking: 7 |
| Land Sq. Ft.: 11,278 | Condition: Excellent | Assessed Value |
| Lanai Sq. Ft.: 700 | Frontage: | Building: \$182,100 |
| Sq. Ft. Other: 0 | Tax/Year: \$506/2023 | Land: \$999,200 |
| Total Sq. Ft. 2,725 | Neighborhood: Kalani Iki | Total: \$1,181,300 |
| Maint./Assoc. \$0 / \$0 | Flood Zone : Zone X - Tool | Stories / CPR: Two / No |
| Parking: 3 Car+, Driveway | Frontage: | |
| Zoning : 03 - R10 - Residential District | View: Diamond Head, Mountain, Sunrise | |

Public Remarks: This home move in ready. Great location in expensive Kahala Area. Selling home fully furnished with 6 Queen beds plus 2 queen sofa sleepers along with all new furniture (a year old). Selling with 8 large flat screens, washer/dryer, 2 large fridge, all stainless steel appliances and everything in the house is sold with the house. Ready to move in. Has dedicated parking for 6-7 cars. Each room has its own key and lockbox. Each room has a split AC unit. Come with 4 full bathrooms, new exterior stucco in modern white with black trim. Walking distance to Kahala Mall, close to diamond head and 10 minutes to Waikiki, 8 min. to UH Manoa. 10 min. to Hanauma Bay. The house has two family rooms and large kitchen/eating area. Number of beds and baths differ from tax record. "All comments, data is provided by seller or seller's representatives. Buyer to confirm all & hold all parties harmless from any discrepancy data in the mls and advertising. Limited Service-Data Entry Addendum signed by seller/s must be sign by buyer/s with Purchase Contract." **Sale Conditions:** None **Schools:** [Wilson](#), [Kaimuki](#), [Kaimuki](#) * [Request Showing](#), [Photos](#), [History](#), [Maps](#), [Deed](#), [Watch List](#), [Tax Info](#)



| Address | Price | Bd & Bth | Living / Avg. | Land Avg. | DOM |
|--|--------------------|----------|---------------|----------------|-----|
| 4576 Kalaniana'ole Highway | \$1,425,000 | 6 & 4/0 | 2,025 \$704 | 11,278 \$126 | 34 |

| Address | Tax Maint. Ass. | Assessed Land | Assessed Building | Assessed Total | Ratio | Year & Remodeled |
|--|---------------------|---------------|-------------------|----------------|-------|------------------|
| 4576 Kalaniana'ole Highway | \$506 \$0 \$0 | \$999,200 | \$182,100 | \$1,181,300 | 121% | 1961 & 2023 |

[4576 Kalaniana'ole Highway](#) - MLS#: [202411888](#) - Original price was \$1,500,000 - This home move in ready. Great location in expensive Kahala Area. Selling home fully furnished with 6 Queen beds plus 2 queen sofa sleepers along with all new furniture (a year old). Selling with 8 large flat screens, washer/dryer, 2 large fridge, all stainless steel appliances and everything in the house is sold with the house. Ready to move in. Has dedicated parking for 6-7 cars. Each room has its own key and lockbox. Each room has a split AC unit. Come with 4 full bathrooms, new exterior stucco in modern white with black trim. Walking distance to Kahala Mall, close to diamond head and 10 minutes to Waikiki, 8 min. to UH Manoa. 10 min. to Hanauma Bay. The house has two family rooms and large kitchen/eating area. Number of beds and baths differ from tax record. "All comments, data is provided by seller or seller's representatives. Buyer to confirm all & hold all parties harmless from any discrepancy data in the mls and advertising. Limited Service-Data Entry Addendum signed by seller/s must be sign by buyer/s with Purchase Contract." **Region:** Diamond Head **Neighborhood:** Kalani Iki **Condition:** Excellent **Parking:** 3 Car+, Driveway **Total Parking:** 7 **View:** Diamond Head, Mountain, Sunrise **Frontage:** **Pool:** None **Zoning:** 03 - R10 - Residential District **Sale Conditions:** None **Schools:** [Wilson](#), [Kaimuki](#), [Kaimuki](#) * [Request Showing](#), [Photos](#), [History](#), [Maps](#), [Deed](#), [Watch List](#), [Tax Info](#)

DOM = Days on Market